



Louis Comfort Tiffany 1848 - 1933

**Louis Comfort Tiffany
1848–1933
Dogwood ca. 1900–15
Tiffany Studios 1902–1938
Leaded Favrile-glass
window 254 x 142.2 cm
Inscription: (lower right, in
black enamel block
lettering)**

**The Metropolitan Museum
of Art, New York**





Louis Comfort Tiffany

***Window with Hudson
River Landscape from
Rochroane 1905***

**Commissioned by
Melchior Beltzhoover
for his Gothic-revival
mansion in Irvington.**

**Courtesy of the
Corning Museum of
Glass**



**Louis Comfort
Tiffany 1848–1933
American.**

**Stained glass
windows View of
Oyster Bay 1908
Tiffany Studios
1902–1938
Leaded Favrite-
glass window from
the William C.
Skinner House,
New York City
184.8 X 168.9 cm
The Metropolitan
Museum of Art,
New York**



Louis Comfort Tiffany

Vase ca. 1893–97
Favrile glass, 51.4 cm.



Vase 1893 -94
Favrile glass, H. 14.3 cm



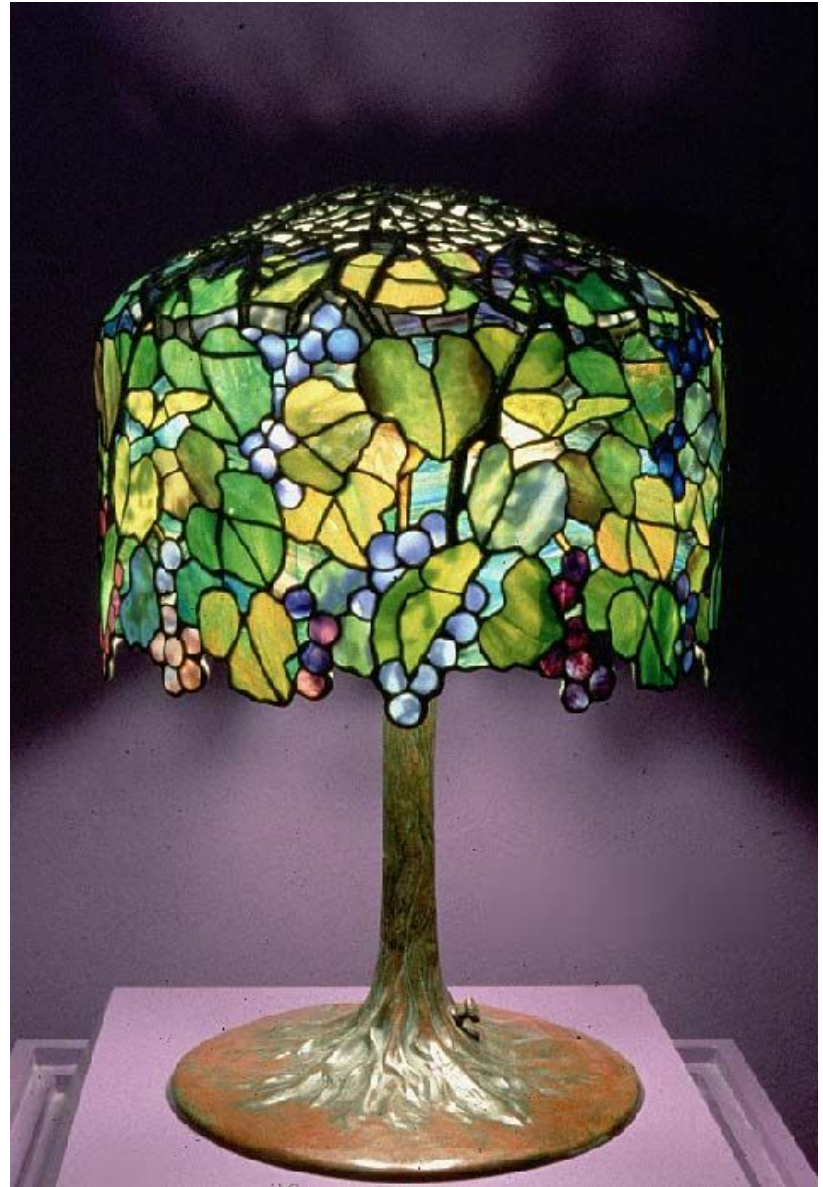
Vase 1893 -6
Favrile glass, 35.9 x 29.2 cm



**Louis Comfort Tiffany 1848–1933 American.
Desk Set ca. 1910–20 Tiffany Studios (1902–1938)
Favrile glass, bronze, H. of paper rack 22 cm Paper holder (clip) and picture frame:
The Metropolitan Museum of Art**



Louis Comfort Tiffany 1848–1933
table lamp Lotus or Water-lily 1904 – 5 Tiffany Studios 1902–1938
Leaded Favrite glass with bronze base, shade H 67.3; base 37.2 cm



Knoxville Museum of Art



Louis Comfort Tiffany 1872

**On the Way between Old and New Cairo, Citadel Mosque of Mohammed Ali, and Tombs of the Mamelukes
Painting - oil on canvas 105.41 x 172.72 cm Brooklyn Museum of Art**



Louis Comfort Tiffany
Arabian Subject 1880
Painting – watercolor and gouache
on paper 38.74 x 25.4 cm



Painting - oil on board Louis Comfort Tiffany Boys Fishing 1900 40.64 cm x 50.8 cm