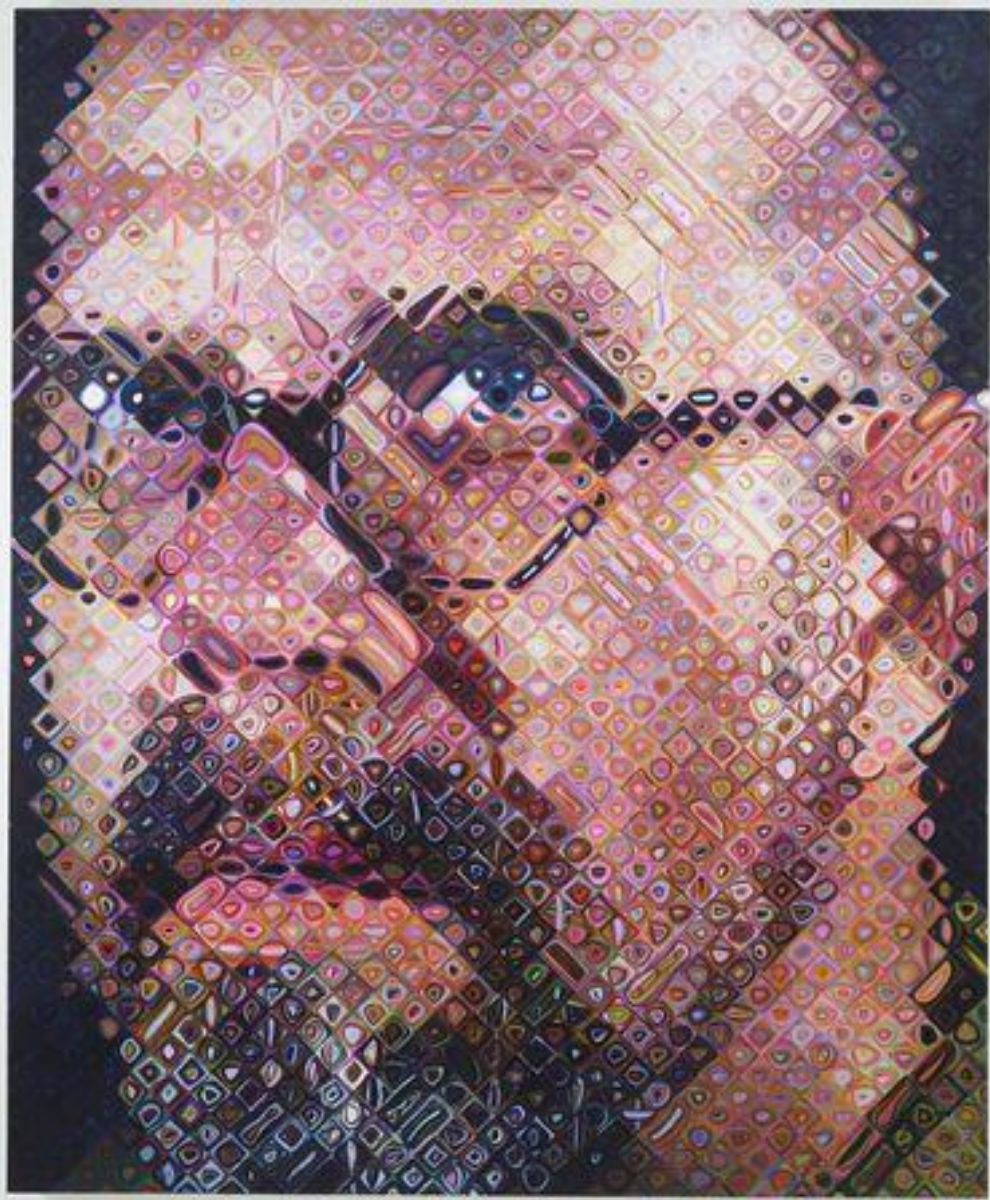
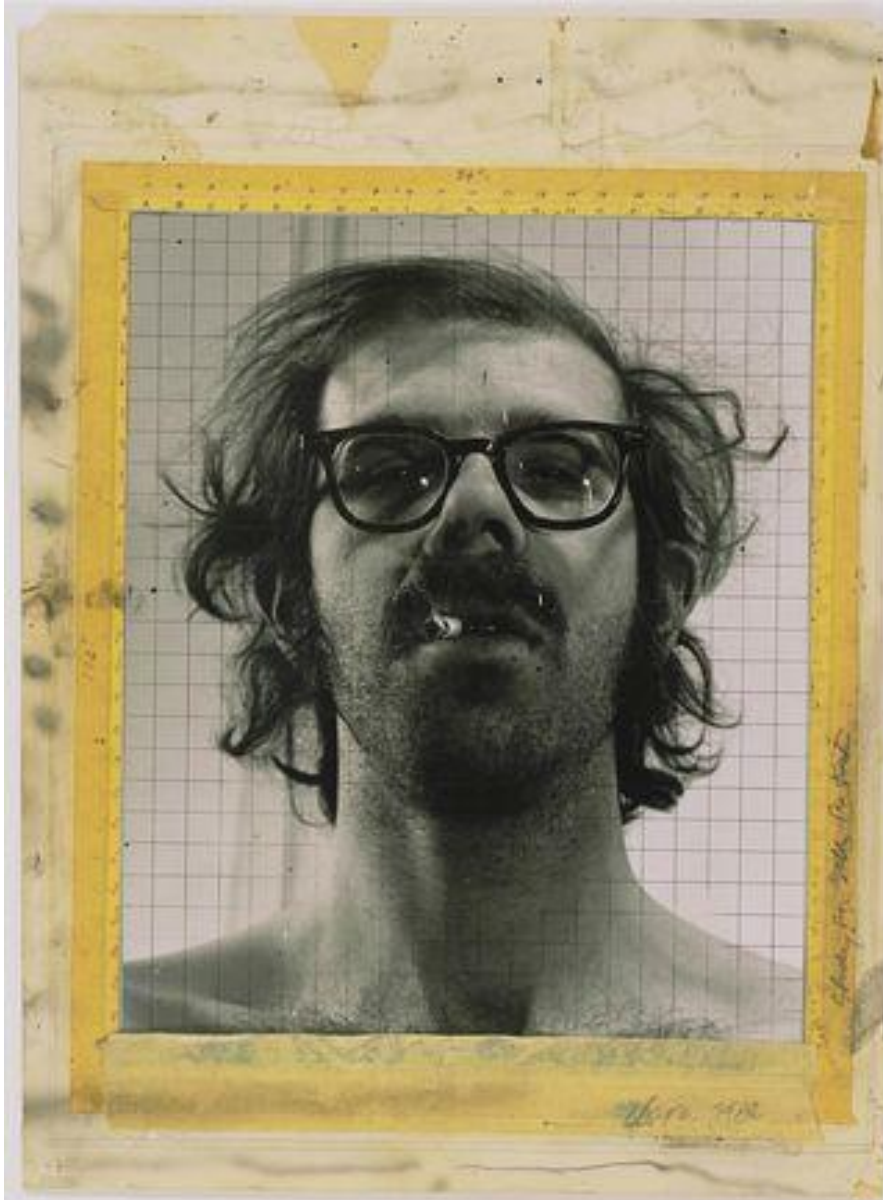




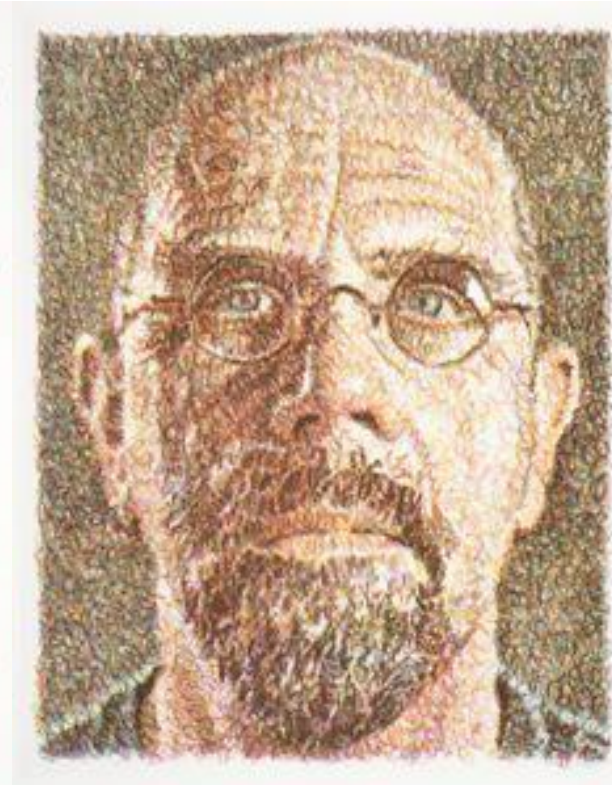
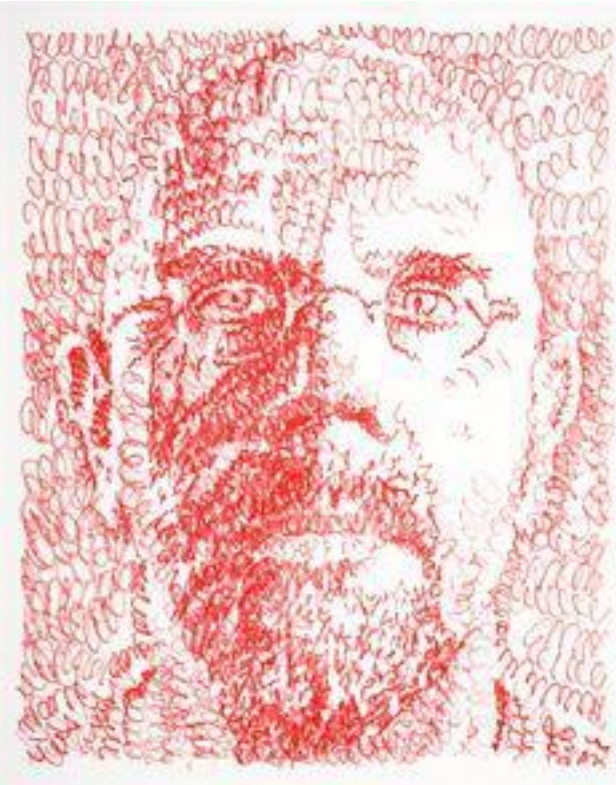
Chuck Close in his studio working on *Self-Portrait* (2004-2005)

Photo: Michael Marfione

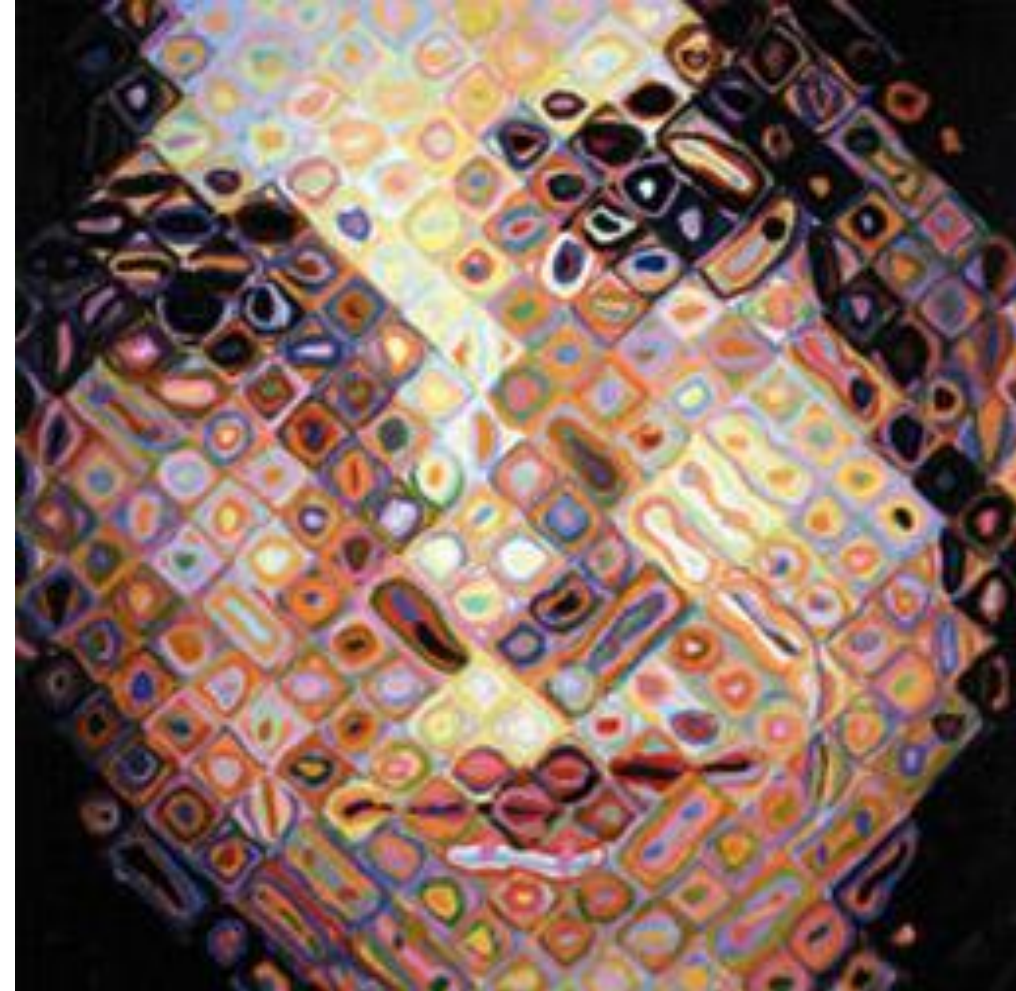


**Chuck Close. American, born 1940
1968 .*Study for Self-Portrait*
Gelatin-silver print, ink, pencil, and
pressure-sensitive tape on board, 47.2 x 33.9 cm**

**Chuck Close. American, born 1940
.1997 .*Self-Portrait* .
Oil on canvas, 259.1 x 213.4 cm**



•Chuck Close *Self Portraits / Scribble / Etching Portfolio* 2001 print | etching on paper 46.36 cm x 38.74 cm



,Maggie 1996
Oil on canvas, 30 x 24"
76.2x 61 cm, Photograph by Ellen Page Wilson, courtesy of Pace
Wildenstein, New York, © Chuck Close



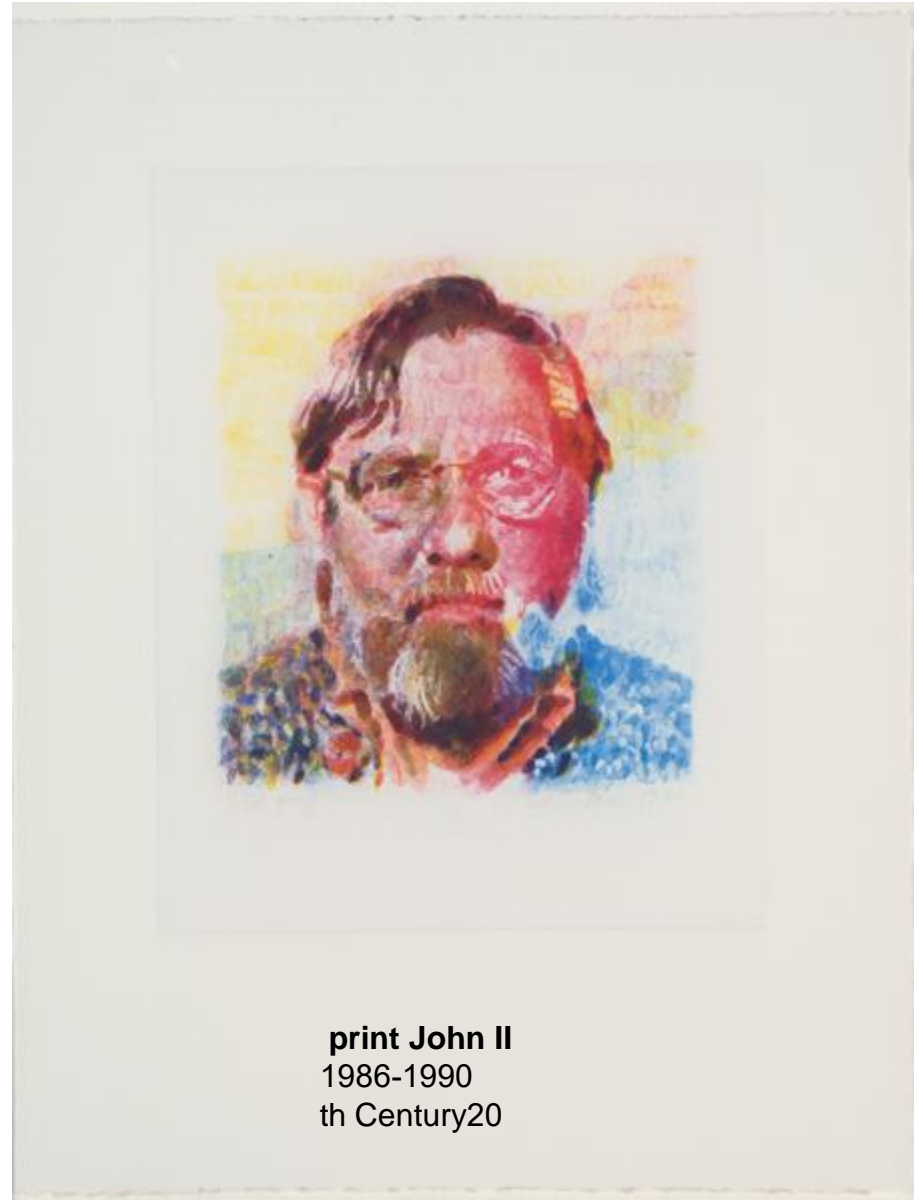
Chuck Close American, born 1940
1985 ,*Fanny/ Fingerpainting*
oil on canvas, 259.1 x 213.4 x 6.3 cm

<http://www.nga.gov/cgi-bin/pinfo?Object=68433+0+none>

הסבר לתמונה



Chuck Close American, born 1940
1986, Leslie
31 ¼ X 25 ¼ inch color wood block print



print John II
1986-1990
th Century20



Chuck Close American, born 1940
2000 *Untitled Torso K.W*
Two daguerreotypes (diptych), each 20.3 x 15.6 cm

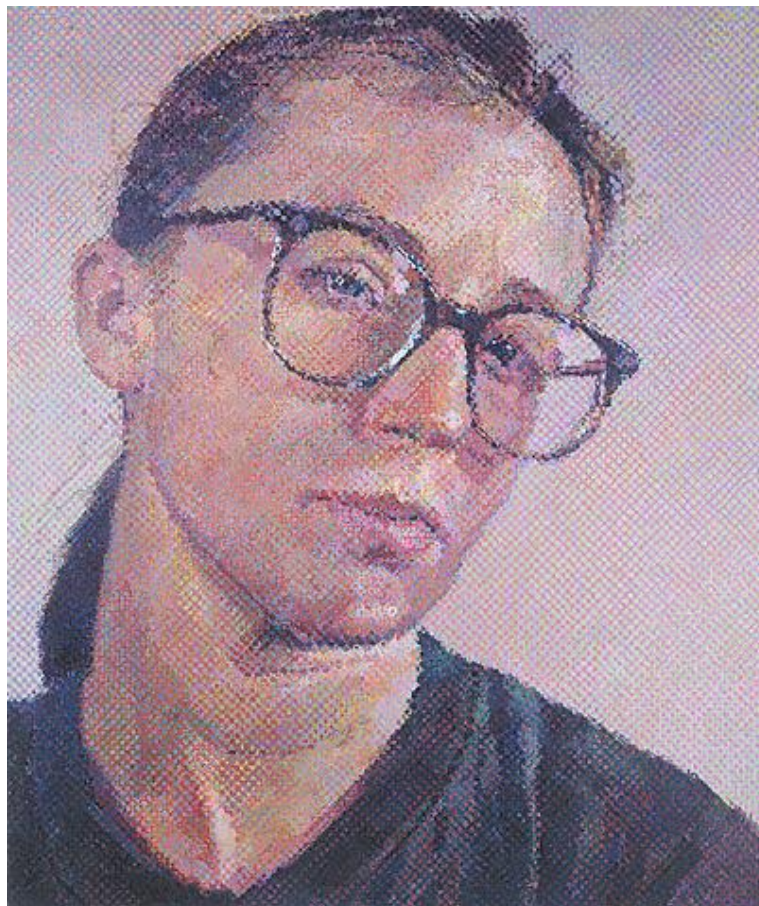


Emily/Fingerprint/Silk Colle
1986

Emily/Fingerprint/Silk Colle
1986



CHUCK CLOSE American, born 1940
1982 ,*Phil III*
Cast handmade paper 68 7/8 x 52 5/8 inch
Purchase: Gaines Challenge Fund 1983.23

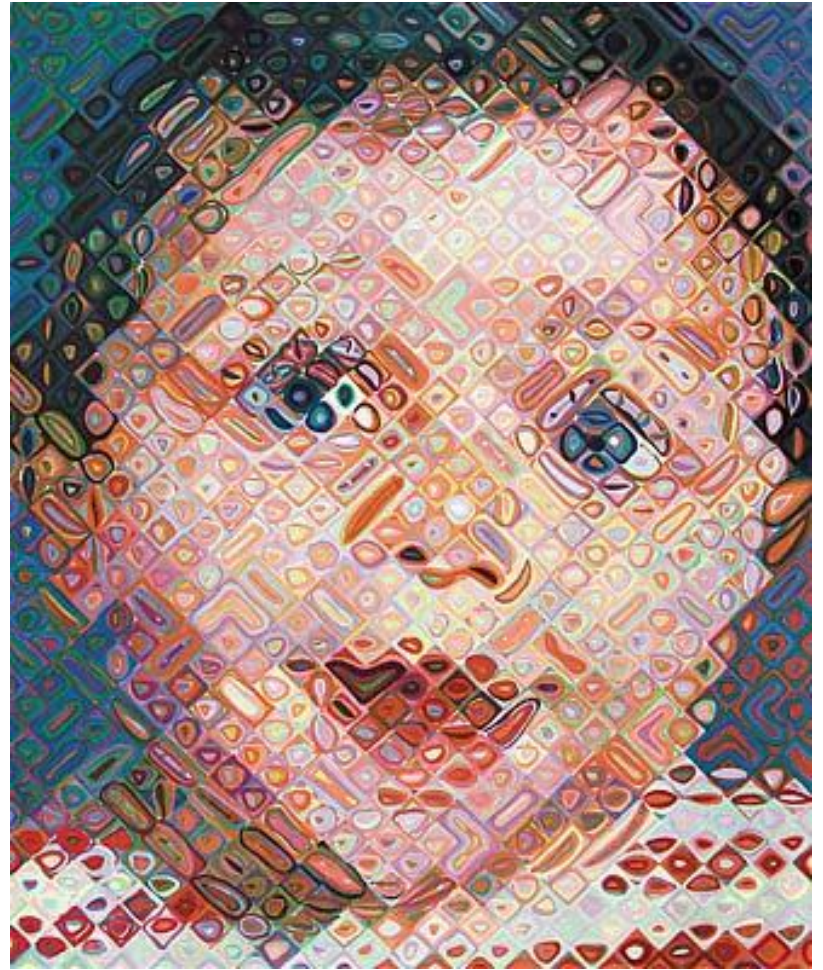


Close, Chuck
,Cindy 1988
Oil on canvas 259.1 x 213.4 cm

-



Lorna 1996 •
digital ink jet print on kozo paper, edition 2/10



CHUCK CLOSE