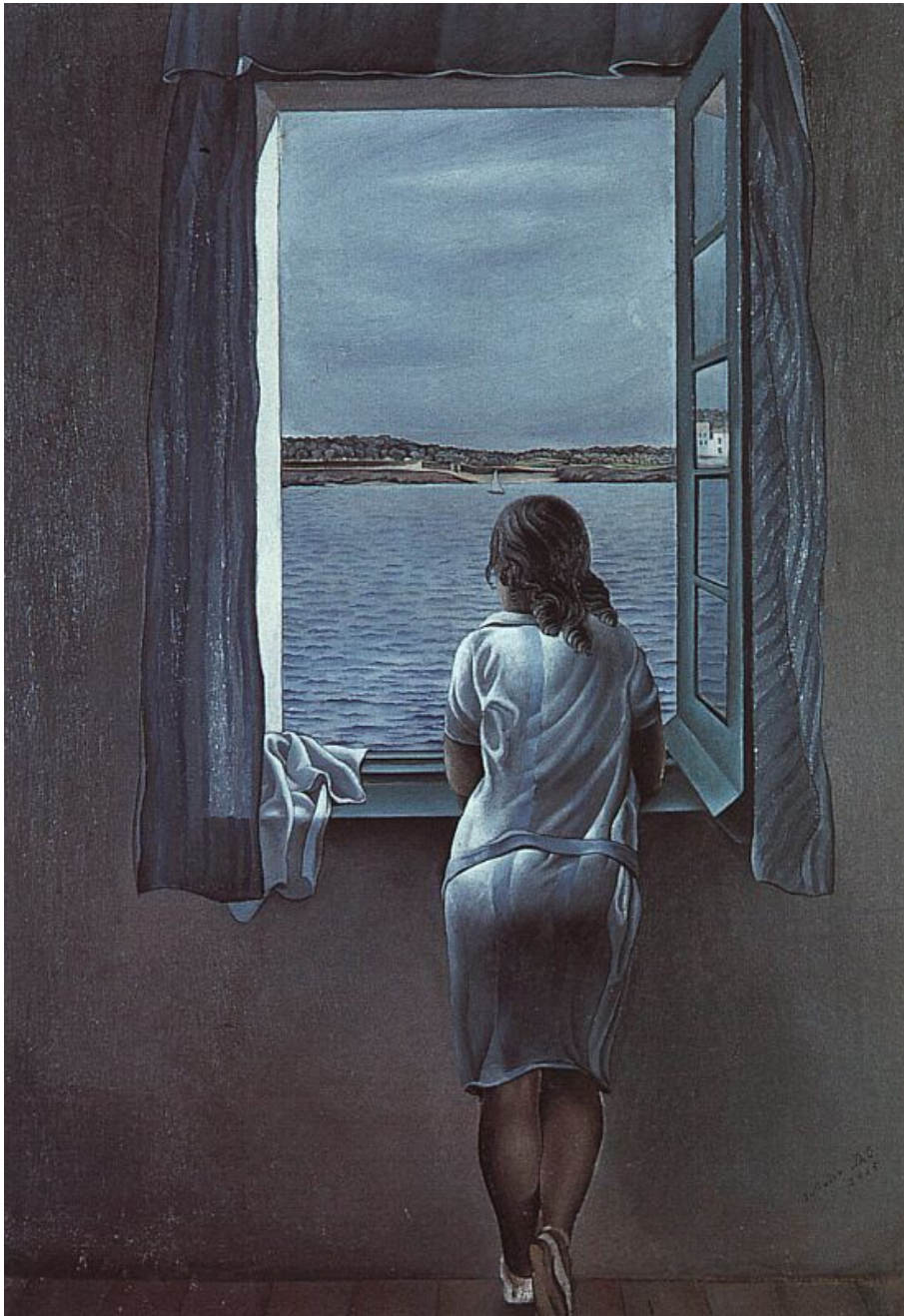


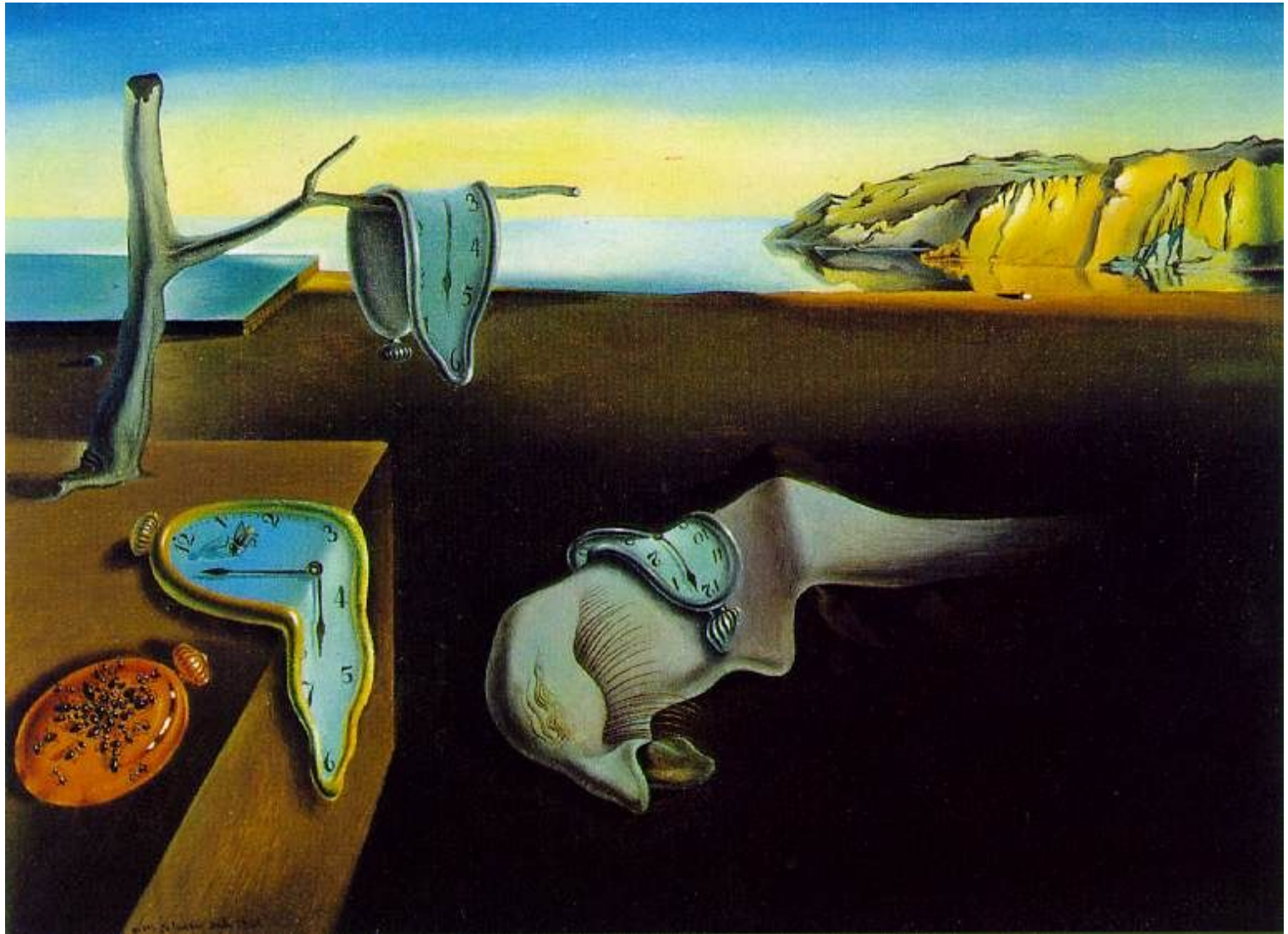


Salvador Dali
1904-1989



Salvador Dalí
(1904-1989)

Figure at a Window. 1925.
Oil on canvas. 102 x 75 cm.
Museo Nacional Centro de
Arte Reina Sofía, Madrid,
Spain.



Salvador Dalí (1904-1989)
1931 The persistence of Memory
1931. Oil on canvas, 24.1 x 33 cm



Salvador Dalí
(1904-1989)

1935 Archeological Reminiscence of Millet's Angelus



Salvador Dalí (1904-1989)
1935 Archeological Reminiscence
of Millet's Angelus



Millet, Jean-Francois
The Angelus
1857-59
Oil on canvas
55.5 x 66 cm
Musee d'Orsay, Paris



Salvador Dalí (1904-1989)
1935 Archeological Reminiscence
of Millet's Angelus



PICASSO, Pablo 1881 – 1973
***The Tragedy*, 1903**
(Blue Period) Oil on canvas
Chester Dale Collection





A Couple with Their Heads Full of Clouds. 1936. Oil on wood. 87 x 66 cm. Private collection



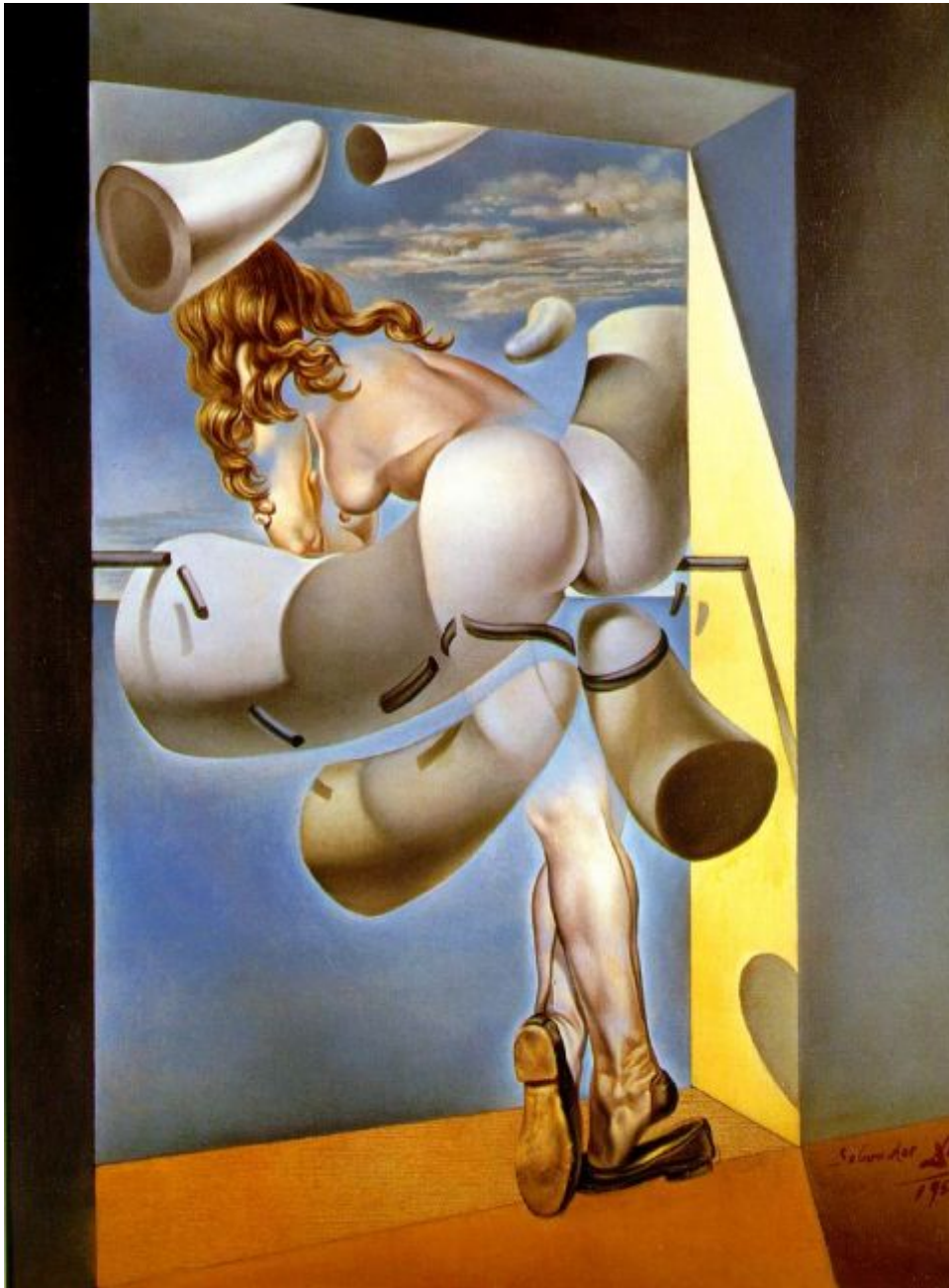
**Salvador Dali
(1904-1989)
Leda atomica 1949
OIL ON CANVAS
60 X44 CM**



***The Madonna
of Port Lligat.***

1950. Oil on
canvas. 366 x
244 cm.

Fukuoka Art
Museum,
Fukuoka,
Japan.

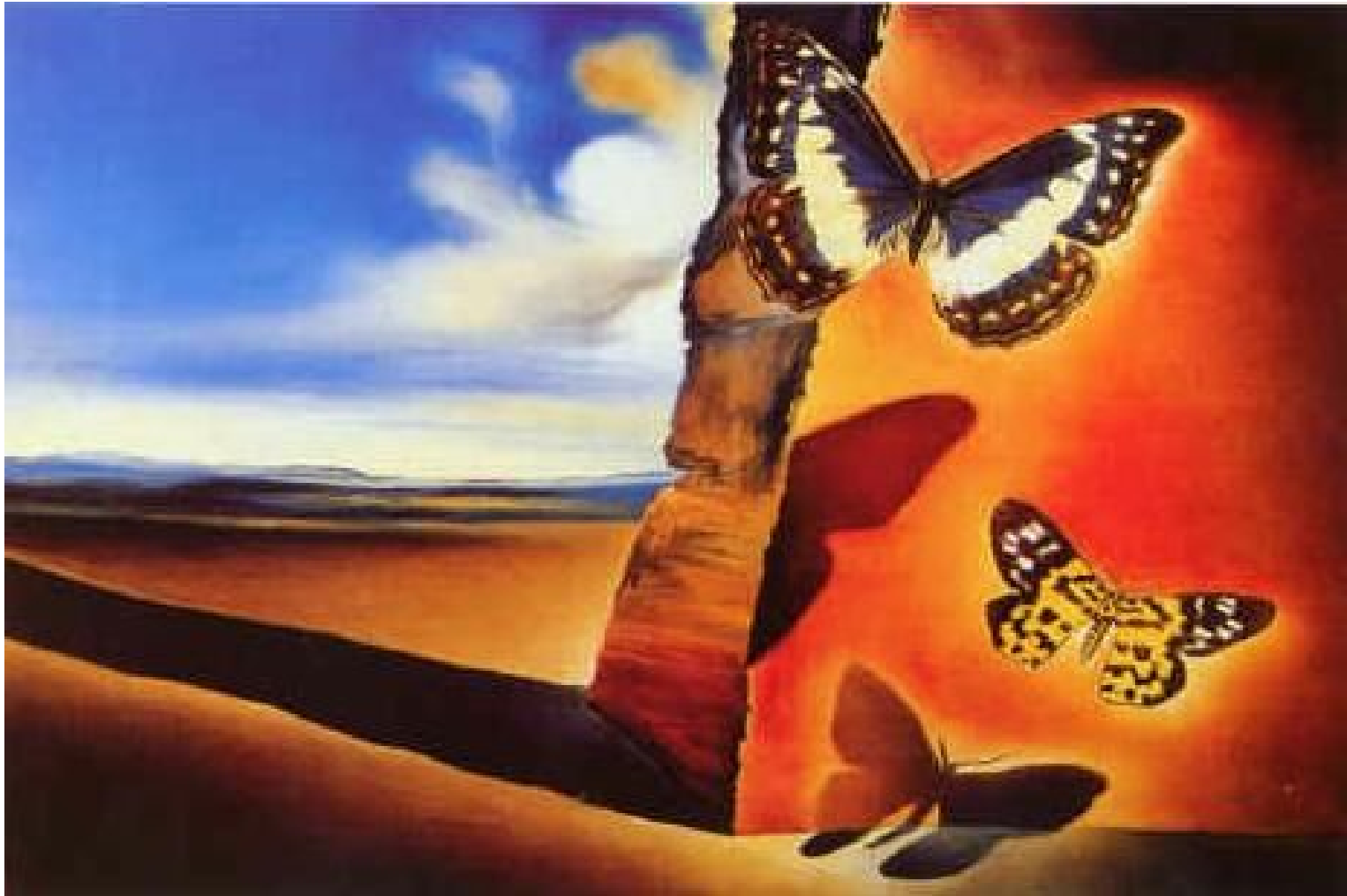


Salvador Dalí
(1904-1989)
1954
Young Virgin
autosodomized
by her own Chastity

Young Virgin Auto-Sodomized by the Horns of Her Own Chastity. 1954. Oil on canvas. 40.5 x 30.5 cm. Private collection.



Salvador Dalí
(1904-1989)
1958
Meditative Rose



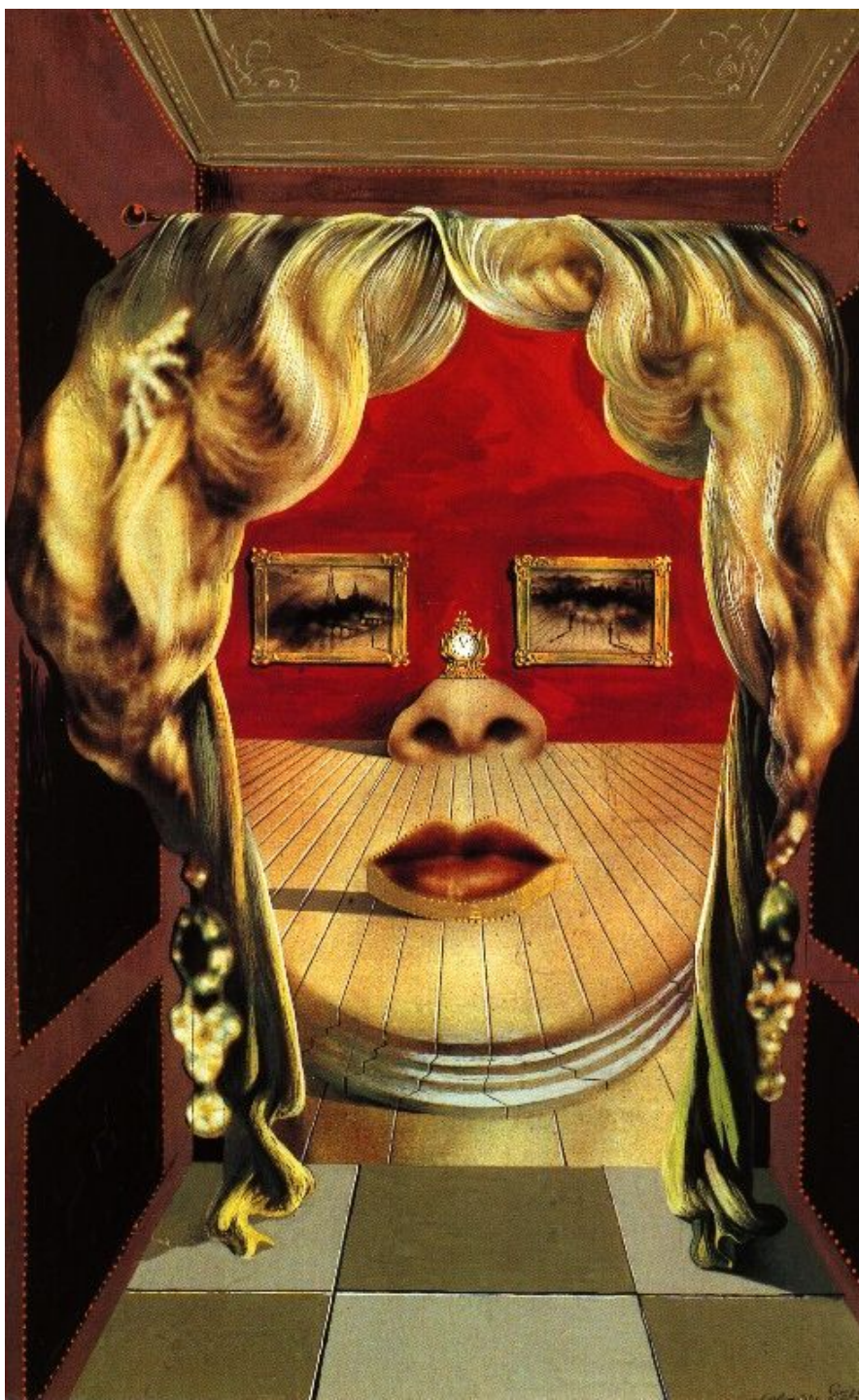
Salvador Dalí
(1904-1989)
1959
Paysage aux Papillons



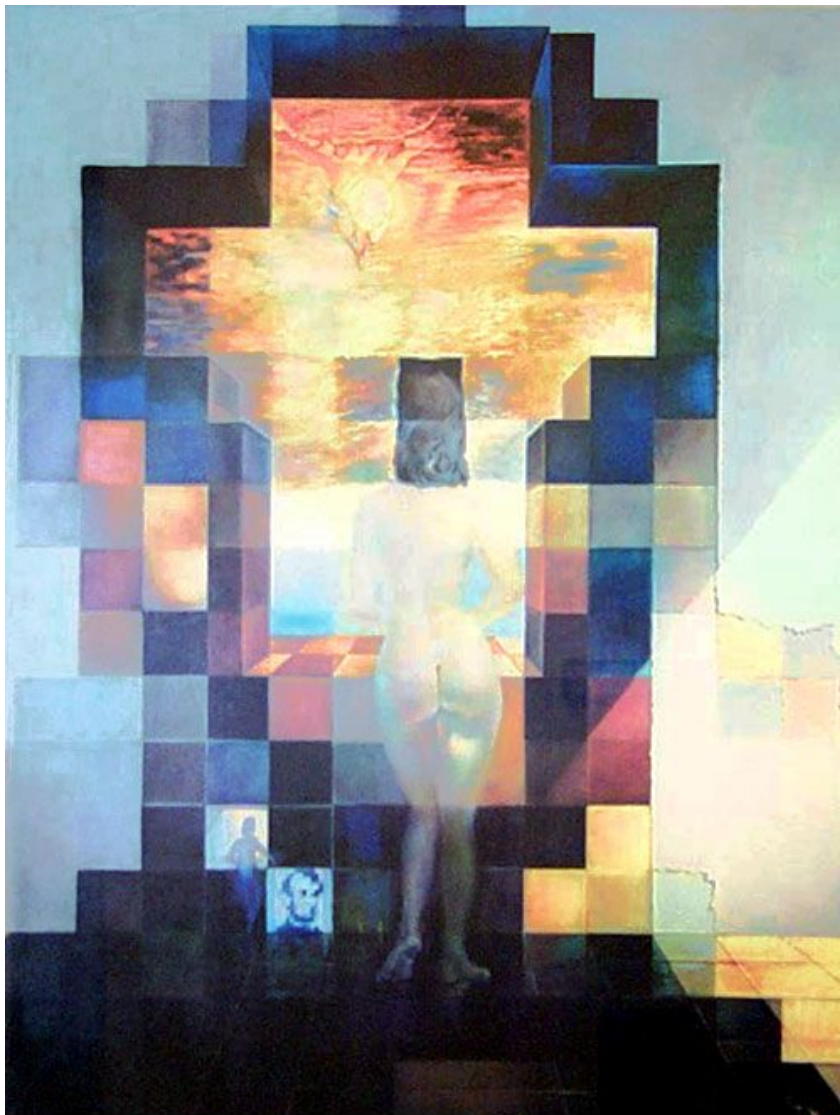
***My Wife, Nude,
Contemplating
Her Own Flesh
Becoming
Stairs, Three
Vertebrae of a
Column, Sky
and
Architecture.***
1945. Oil on
wood panel. 61
x 65 cm. Private
Collection



Salvador DALÍ Spain 1904 – 1989 United States of America 1940-48
Lobster telephone [Aphrodisiac telephone] 1936 painted plaster, telephone
18.0 (h) x 30.5 (w) x 12.5 (d) cm



DALÍ Face of Mae West Which Can Be Used as an Apartment 1935



Salvador Dalí
(1904-1989)
1977
Lincoln in Dalivision



← Viewed from a distance.