

Surrealism

Rene Magritte 1898-1967

Max Ernst 1891-1976

Marcel Duchamp 1887-1968

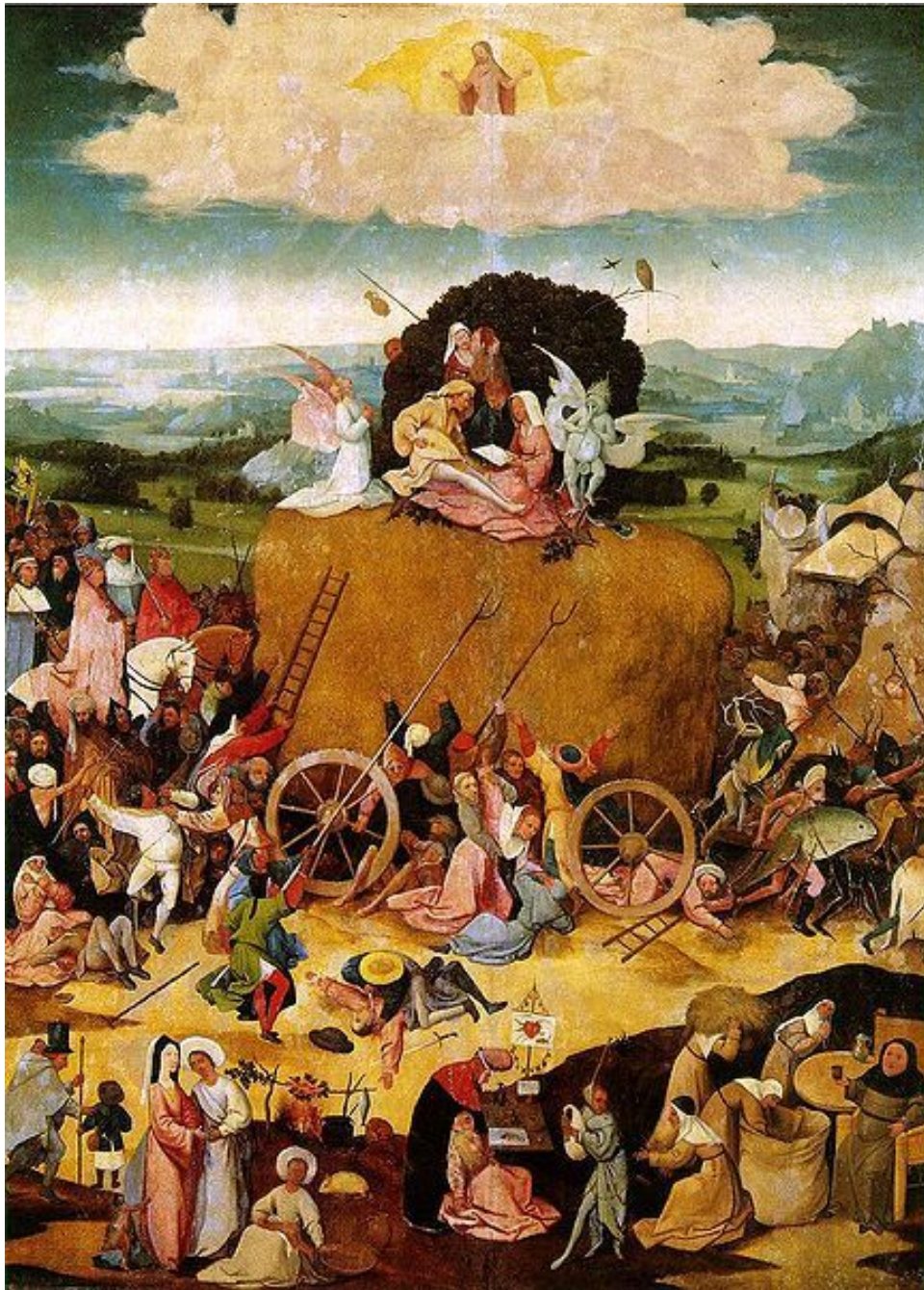
Giacometti, Alberto 1901-1966

Man Ray 1890-1976

Dali



**Bosch, Hieronymous
(1453-1516)**





**Bosch, Hieronymus
(1453-1516)
Paradise and Hell
c. 1510
Left and right panels of a
triptych: oil on wood
Each panel 135 x 45 cm Prado,
Madrid**



**Rene Magritte
(1898-1967)**



Rene Magritte 1898-1967
***The Lovers*. 1928.**
Oil on canvas. 54.2 x 73 cm. Private)

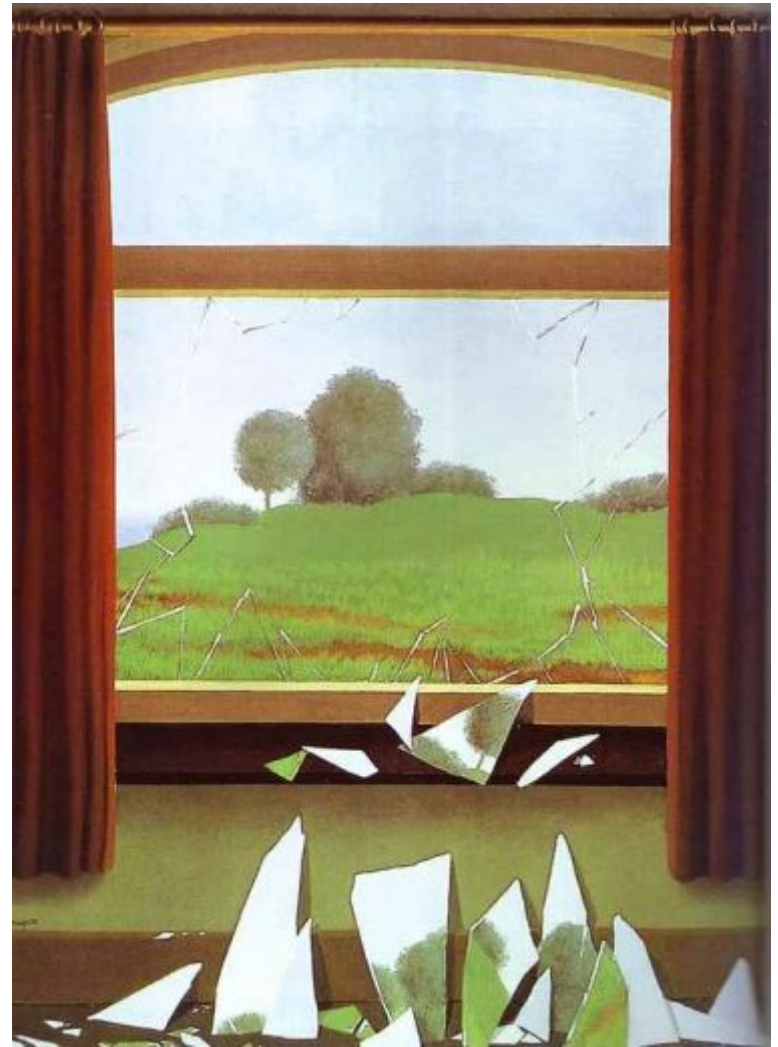


Rene Magritte (1898-1967)
The Lovers II



Rene Magritte (1898-1967)

***La Condition humaine* 1933 Rene Magritte
Oil on canvas. 100 x 81 cm. .1933
.The National Gallery of Art, Washington, DC, USA**



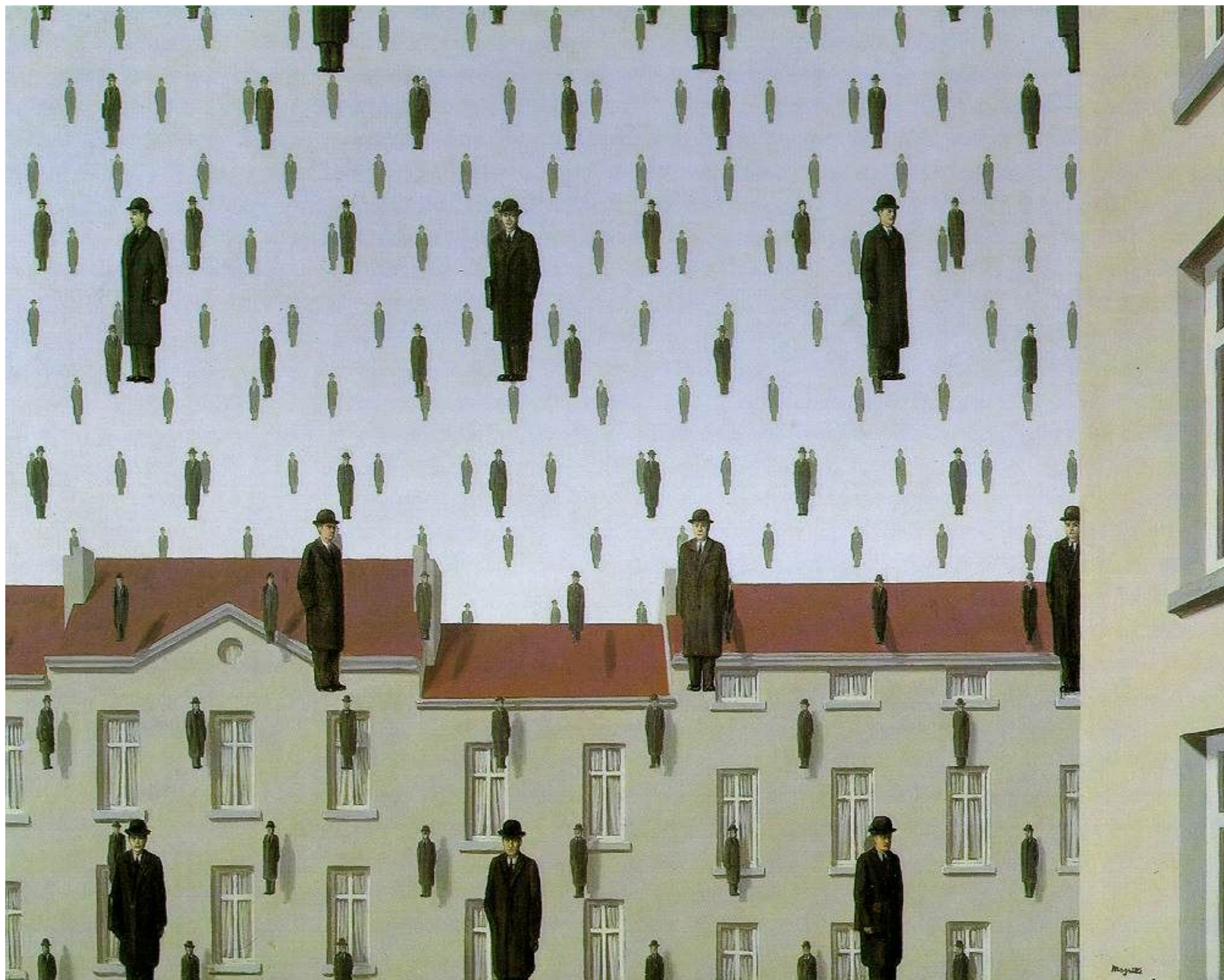
**1936 .*The Key to the Fields.* Rene Magritte
Oil on canvas. 80 x 60 cm. .
. Thyssen-Bornemisza Collection, Madrid, Spain**



The Trap La Thérapeute-
Rene-Magritte-1941
Gouache sur papier.
47.6 x 31.3 cm



Empire of Light
(*L'Empire des*
lumières), 1953–54.
Oil on canvas,
195.4 x 131.2 cm



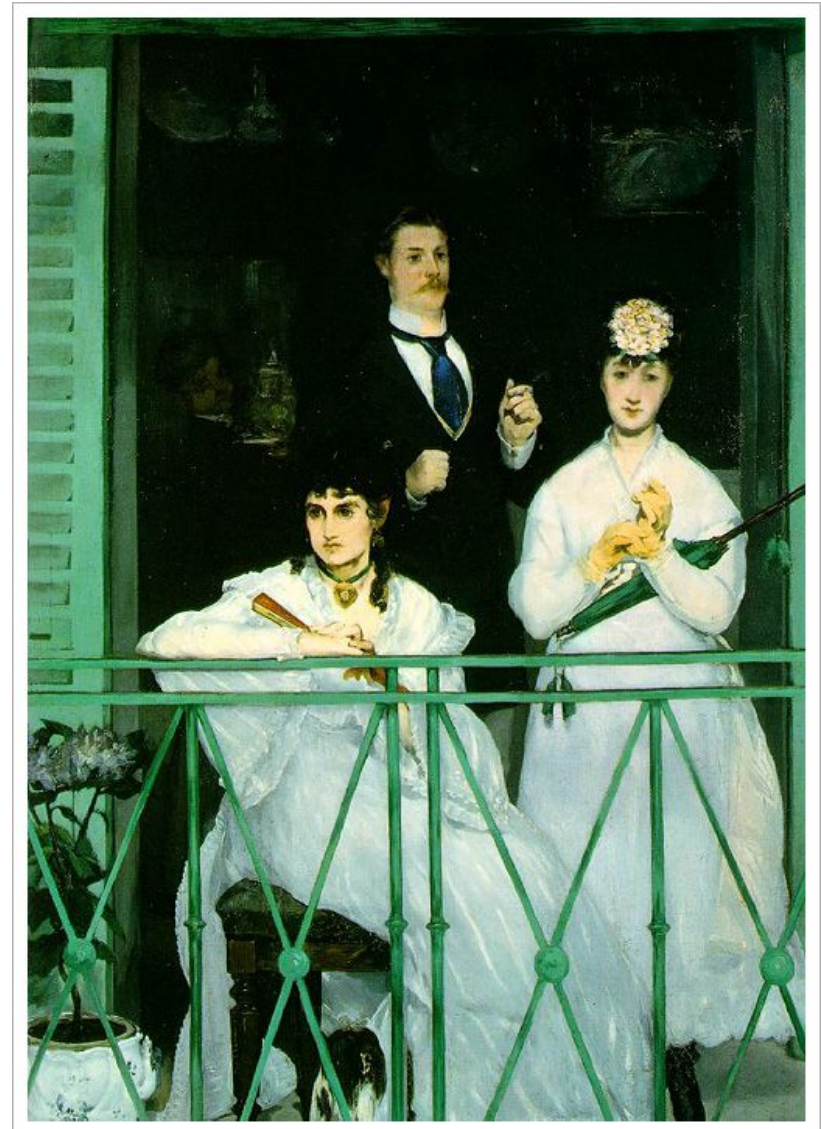
Rene Magritte (1898-1967) *Gonconda*. 1953. Oil on canvas. 81 x 100 cm.
The Menil Collection, Houston, TX, USA.



Rene Magritte 1898-1967
Perspective: Madame Recamier by David



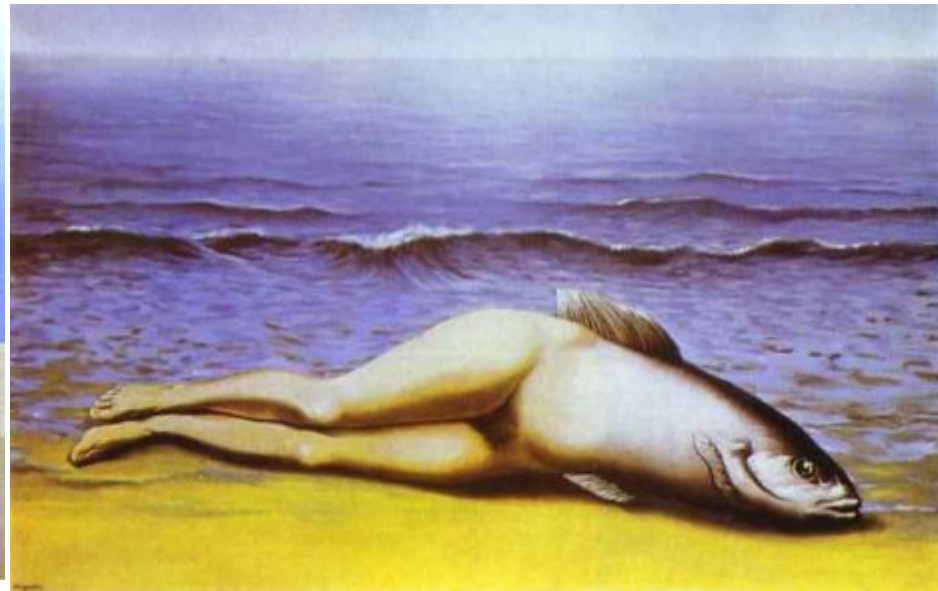
.Perspective II: Manet's Balcony
Oil on canvas. 81 x 60 cm. .1950
.Museum van Hedendaagse Kunst, Ghent, Belgium



balcony 1868-9 Manet
169 x125 cm



1933/34 .*Black Magic*
Oil on canvas. 73 x 54.4 cm. .
Musée Royaux des Beaux-Arts, Brussels, Belgium



1934 .*Collective Invention*
Oil on canvas. 73.5 x 97.5 cm. Kunstsammlung .
.Nordrhein-Westfalen, Düsseldorf, Germany



**Rene Magritte
(1898-1967)
La Grande famille**





Oil on canvas. 73 x 100 cm. Private collection .1938 .*The Domain of Arnheim*



Max Ernst

1891- 1976

ארנסט נולד בגרמניה השתייך לדאדא ואח"כ לסוריאליזם, יצר בטכניקות שונות. עבר לפאריז ועם הכיבוש הגרמני ברח לארה"ב.

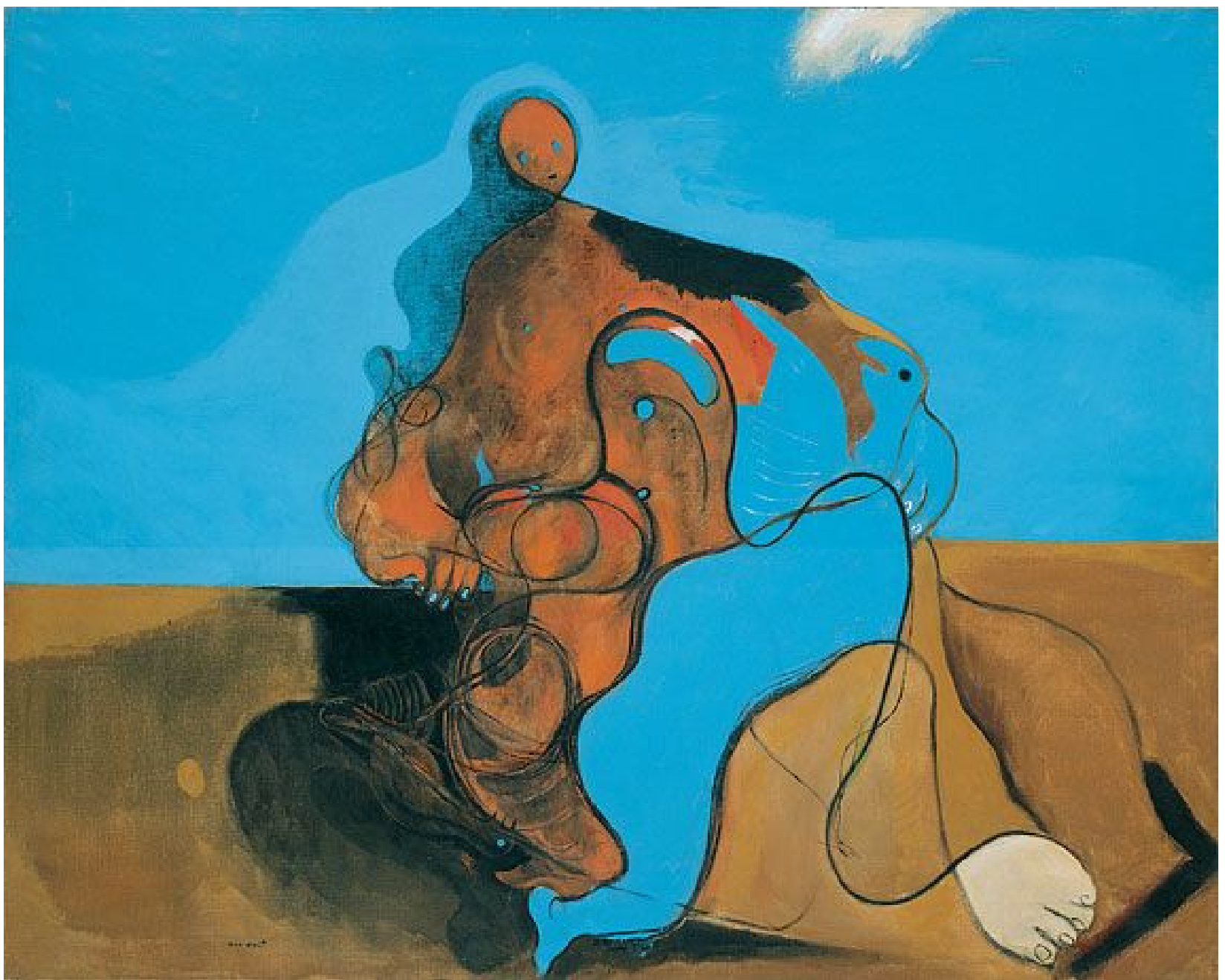
הוא הרבה לחקור וליצור טכניקות אמנותיות שונות, התפרסם והגיע לרווחה כלכלית. בסוף ימיו חזר לצרפת וניקבר בפאריז



City with Animals ca. 1919. Oil on burlap, 66.6 x 62.3 cm.



Max Ernst 1891-1976 *The Hat Makes the Man*. 1920.
Gouache and pencil on cut-and-pasted printed paper on board with ink inscriptions, 35.6 x 45.7 cm



Max Ernst 1891-1976 *The Kiss (Le Baiser)*, 1927. Oil on canvas, 129 x 161.2 cm. Peggy Guggenheim Collection



Max Ernst (1891-1976)
The Entire City 1933/36
Oil on canvas 97 x 145 cm Private collection



Max Ernst (1891-1976)
The Wavering Woman 1923
Oil on canvas
130.5 x 97.5 cm
Kunstsammlung Nordrhein-
Westfalen, Dusseldorf



**Max Ernst: The King
Playing with the
Queen, 1954
Museum of Modern
Art, NY**



Napoleon in the Wilderness 1941

Oil on canvas 46.3 x 38.1 cm



Marcel Duchamp
(1887-1968)



Marcel Duchamp 1887-1968



"Hay millones de artistas que crean, sólo unos cuantos miles son aceptados o, siquiera, discutidos por el espectador; y de ellos, muchos menos todavía llegan a ser consagrados por la posteridad."
/ Duchamp.

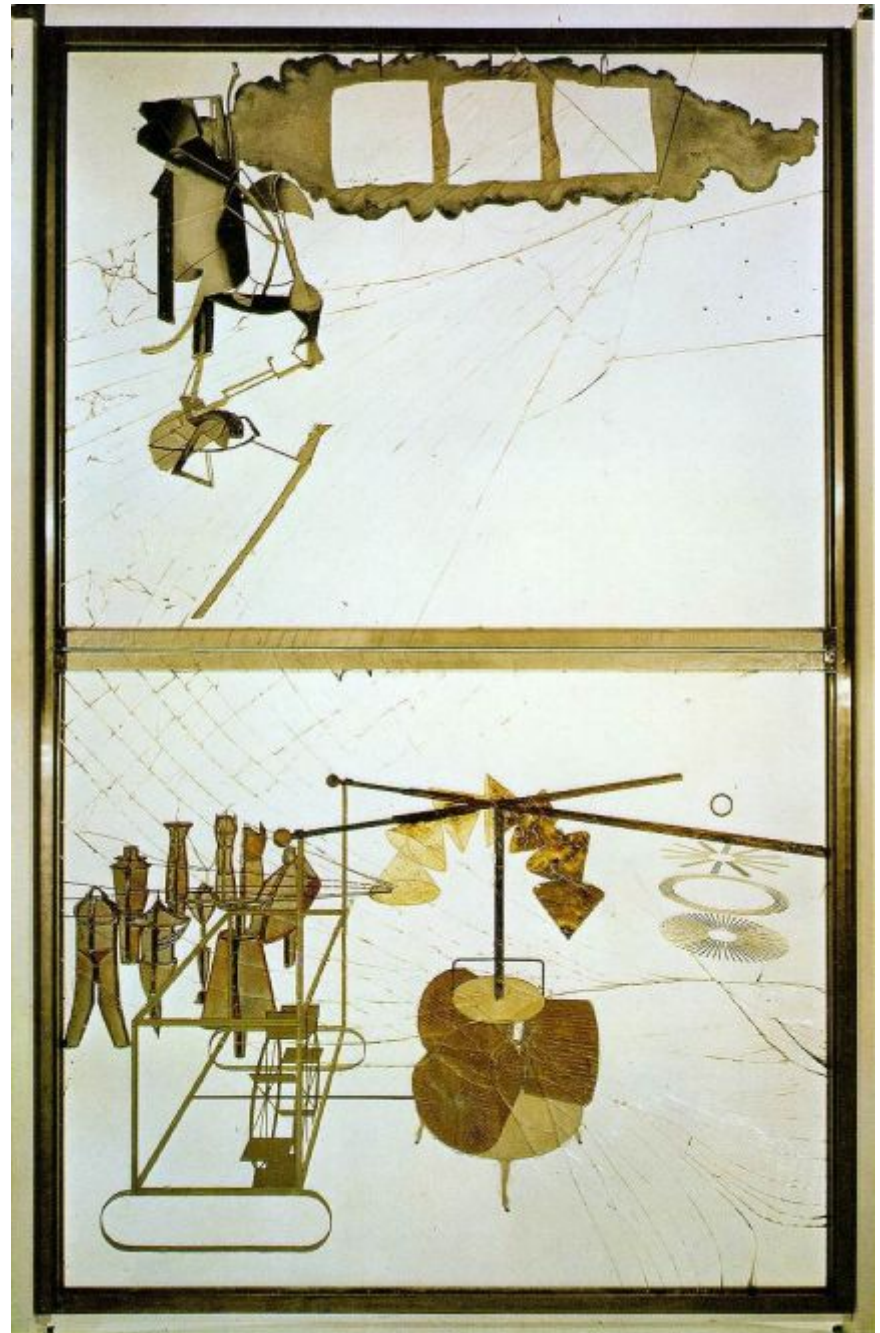
.(1919-1940) .L.H.O.O.Q Marcel Duchamp's



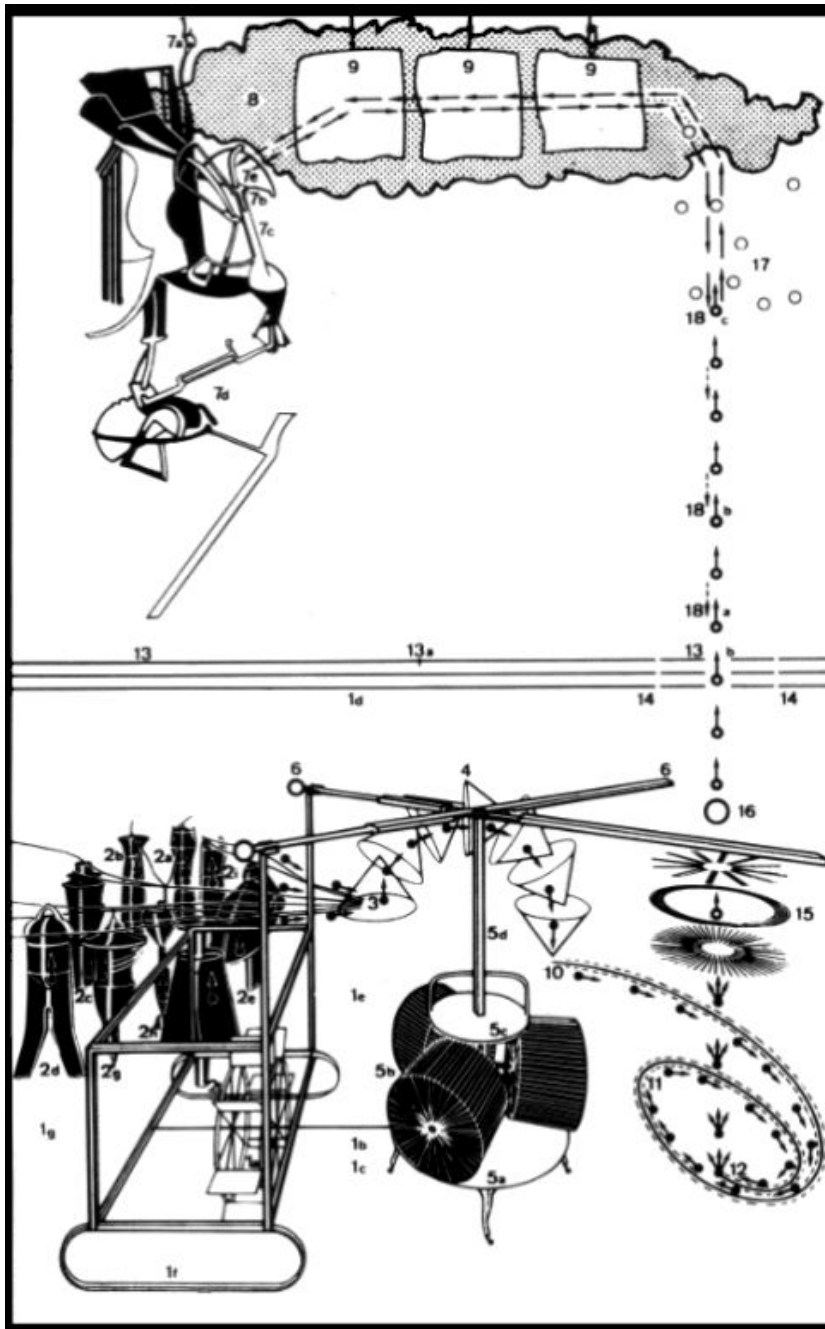
Marcel Duchamp
American, born France. 1887-1968
Bicycle Wheel. New York 1951 (third version, after
lost original of 1913). Metal wheel mounted on
painted wood stool, 129.5 x 63.5 x 41.9 cm.
The Sidney and Harriet Janis Collection



Fountain Marcel Duchamp 1887-1968
(replica of 1917 original) 1950
Marcel Duchamp, American (born France),
Porcelain urinal 30.5 x 38.1 x 45.7 cm



Marcel Duchamp 1915-1923
The Bride Stripped Bare by Her Bachelors,
oil, varnish, lead wire, .Even (The Large Glass)
lead foil, mirror silvering, and dust on two
glass panels (cracked), each mounted between
two glass panels, with five glass strips, tinfoil,
and a wood and steel frame,
(277.5 x 175.8 cm.), Philadelphia Museum of
Art, Bequest of Katerine S. Dreier (Photo:
.(Philadelphia Museum of Art



Key to the *Large Glass*
(including elements not
executed):

- 1 Chariot or Sleigh
 - (a) Water-mill wheel
 - (b) Pinion
 - (c) Trap-door to basement
 - (d) Pulley
 - (e) Revolution of the bottle of Bénédictine
 - (f) Runners
 - (g) Sandow
- 2 Nine Malic Moulds/Cemetery of Uniforms and Liveries
 - (a) Priest
 - (b) Delivery boy
 - (c) Gendarme
 - (d) Cavalryman
 - (e) Policeman
 - (f) Undertaker
 - (g) Servant/Flunky
 - (h) Busboy/Waiter's assistant
 - (i) Station-master
- 3 Capillary Tubes
- 4 Sieves or Parasols
- 5 Chocolate Grinder
 - (a) Louis XV chassis
 - (b) Rollers
 - (c) Necktie
 - (d) Bayonet
- 6 Scissors
- 7 The Bride/*Pendu femelle*
 - (a) Suspension ring
 - (b) Mortice joint
 - (c) Stem
 - (d) Wasp
- 8 Milky Way
- 9 Draught Pistons
- 10 Region of Butterfly Pump
- 11 Toboggan or Planes/Slopes of flow
- 12 Crashes or Splashes
- 13 Horizon/Bride's garment
 - (a) Vanishing point of perspective
 - (b) Region of 'Wilson-Lincoln' effect
- 14 Boxing Match
- 15 Oculist Witnesses
- 16 Magnifying glass
- 17 Nine Shots
- 18 Handler of Gravity
 - (a) Trivet
 - (b) Rod
 - (c) Weight

•→ path of Illuminating Gas

→ Bride's instructions

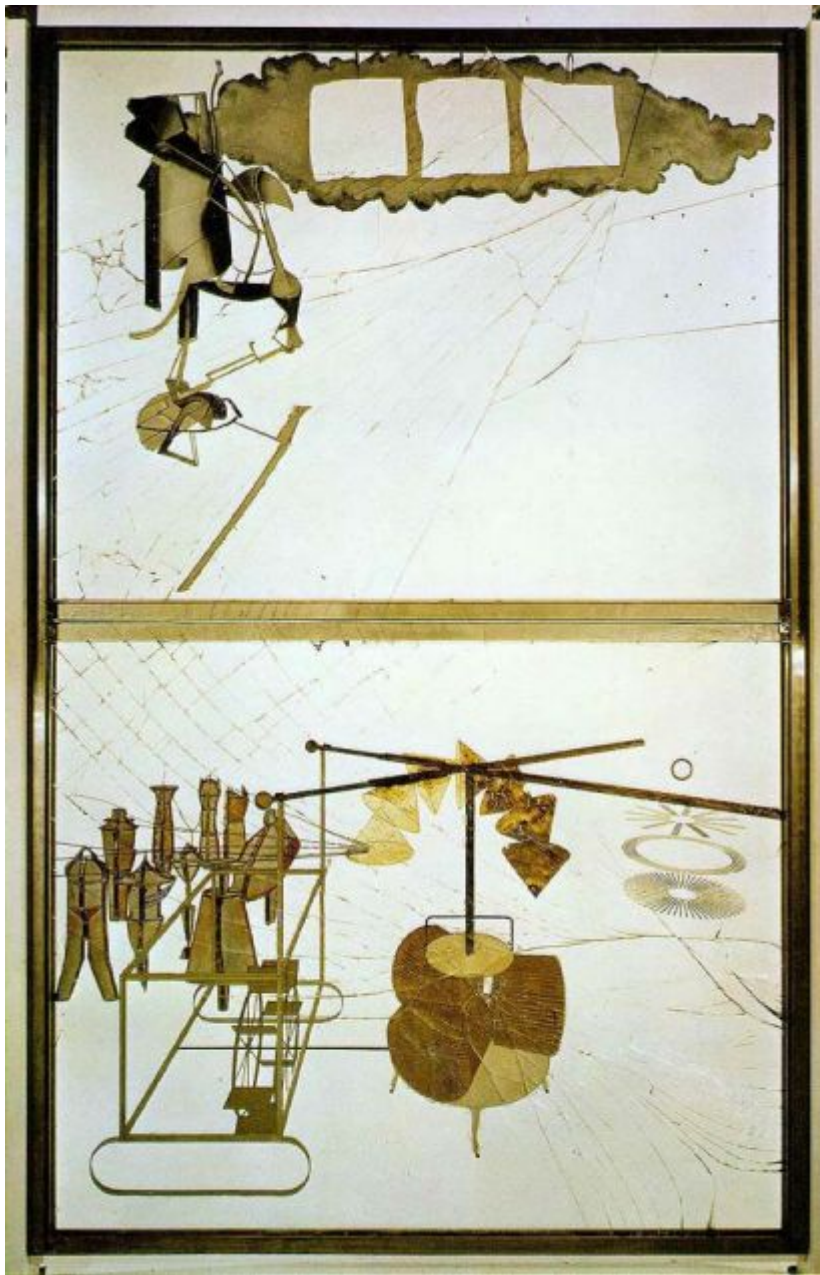
After Jean Suquet, *Miroir de la Mariée*
(Flammarion).



Marcel Duchamp 1913
Bicycle Wheel 60.2 cm high.



.Fountain 1917
Readymade: porcelain urinal. 23.5 x 18 cm, height 60 cm. Private collection



***The Bride Stripped Bare By Her Bachelors, Even
or The Large Glass. 1915/23.***

**Oil, vanish, lead foil, lead wire and dust in two
glass plates mounted with aluminium, wood and
steel frames. 272.5 x 175.8 cm. The Philadelphia
Museum of Art, Philadelphia, PA, USA**



**Marcel Duchamp
(1887-1968)
L.H.O.O.Q.
Mona Lisa with
Moustache**



Nude Descending a Staircase No.2 1912
Oil on canvas 147.5 x 89 cm. .
The Philadelphia Museum of Art, Philadelphia, PA, USA



Portrait of Chess Players
Oil on canvas .1911 108x101 cm
The Philadelphia Museum of Art, Philadelphia, PA, USA



**Marcel Duchamp
(1887-1968)
Rotoreliefs**



Giacometti, Alberto
1901-1966

ALBERTO GIACOMETTI

Spoon Woman

1926

Bronze

56 inches high

Solomon Guggenheim Museum,
New York



.Alberto Giacometti. Swiss, 1901-1966
1927 *The Couple* (cast 1955)
Bronze, 59.6 x 38 x 17.5 cm

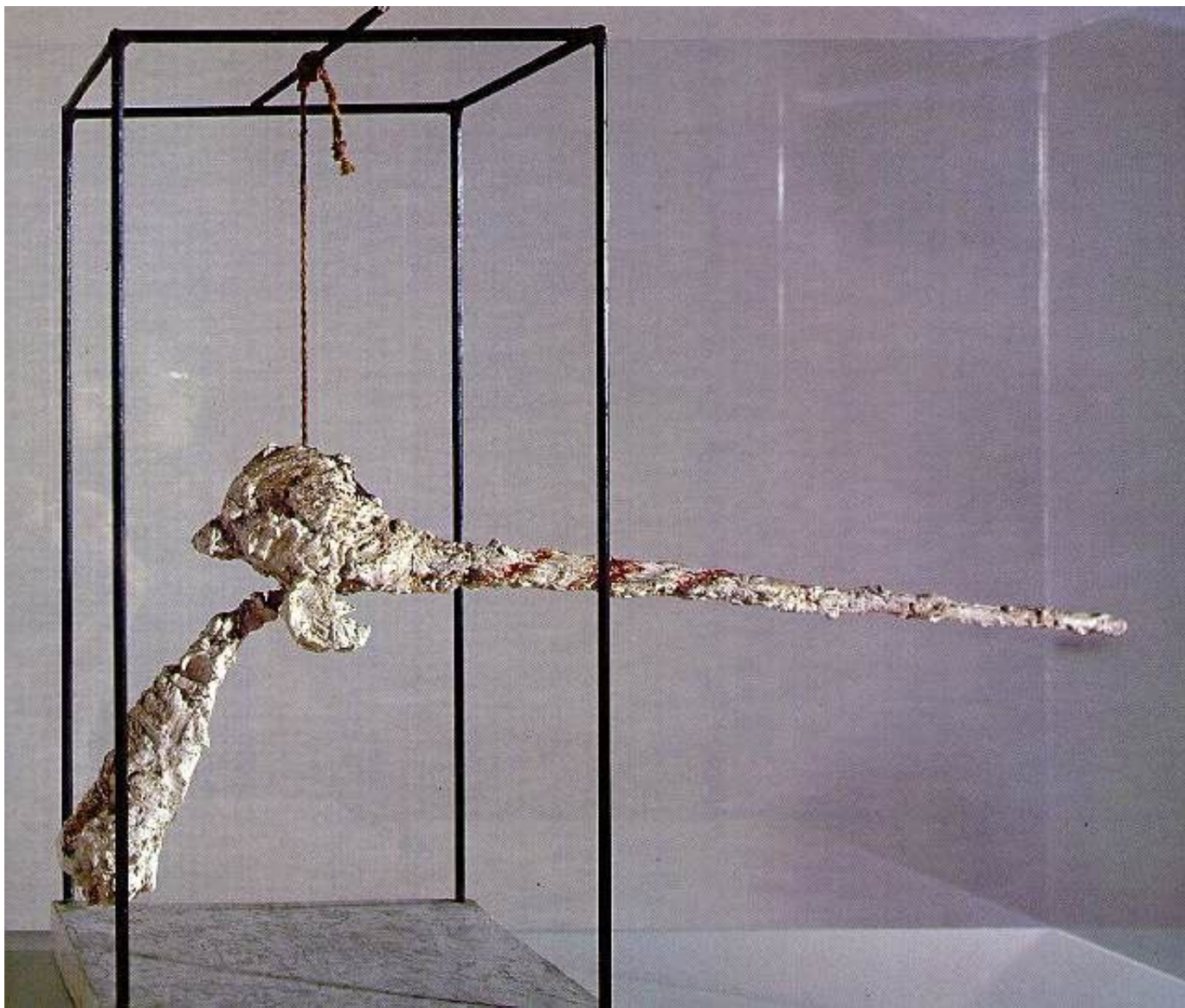


Alberto Giacometti. Swiss, 1901-1966
.1933 .Cubist Head
Engraving, plate: 30.6 x 25.4 cm; sheet:
50.8 x 38 cm



Alberto Giacometti Swiss, 1901-1966
.1933-34 .Head-Skull .
Plaster, 18.5 x 20 x 22.5 cm





Giacometti, Alberto
The Nose
1947
Metal, cord, and
painted plaster
82 x 42 x 40.5 cm
Kunstmuseum
Basel

Giacometti, Alberto
Tall Figure 1949
Painted bronze 166 x 16.5
x 34.5 cm
Museum of Modern Art,
New York



Alberto Giacometti
***Woman Walking* 1932**
Plaster and iron wire, .
150 cm high, including base.
Peggy Guggenheim
Collection. 76.2553.132.





1956 , Woman of Venice
Alberto Giacometti Swiss, 1901–1966
(Painted bronze; H 121.6 cm)



.(Alberto Giacometti. (Swiss) 1901-1966
1948 *Standing Woman* 166x16.5x34.2 cm



Alberto Giacometti. (Swiss) 1901-1966
.1950 .*The Chariot*

Painted bronze on wood base 144.8 x 65.8 x 66.2 cm
base: 24.8 x 11.5 x 23.5 cm



Charioteer of Delphi" •
470 BC. 1.80 cm



Alberto Giacometti : Kat



cast 1957 Alberto Giacometti, Dog, 1951



**Alberto Giacometti Swiss, 1901-1966
1960 .*Monumental Head* .
Bronze 95.3 x 30 x 33 cm**



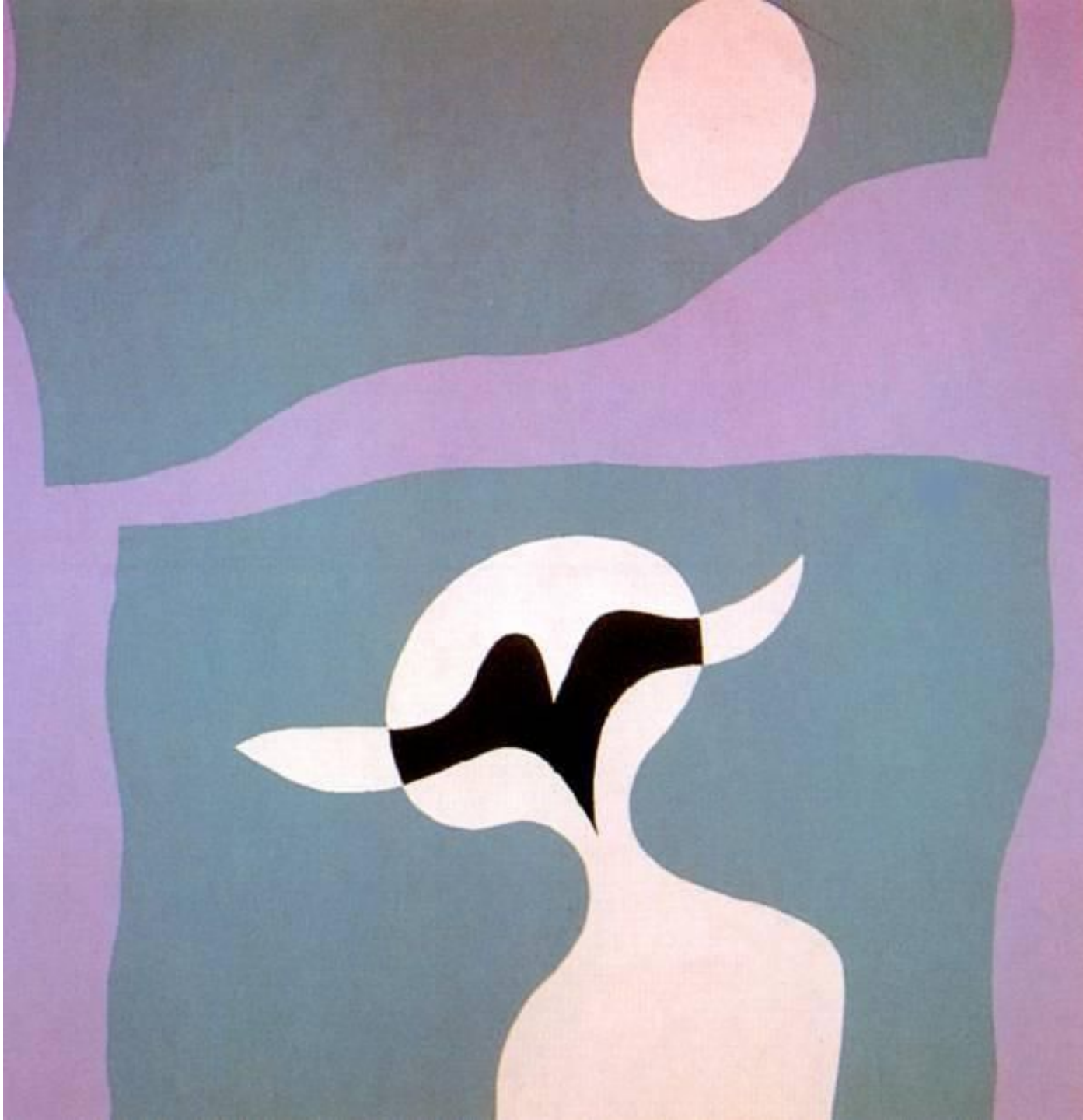
**Alberto Giacometti. (Swiss, 1901-1966
1960 .*Tall Figure, III* .
Bronze 236.2 x 29.5 x 52.4 cm .**



Jean Arp (1887-1966)



Jean Arp (1887-1966)
**Constellation with Five White Forms and Two Black, Variation
III**
Oil on wood, 1932 Solomon Guggenheim Museum



Man, mustache, navel



**Jean Arp
(1887-1966)
Coquille Crystals**



**Jean Arp
(1887-1966)
Head and Shell
1933. Polished brass, 19.7
cm high.
Peggy Guggenheim
Collection**



**Jean Arp
(1887-1966)**

**Overturnd Blue Shoe with Two Heels Under a Black Vault
1925. Painted wood, 79.3 x 104.6 x 5 cm. Peggy Guggenheim Collection**



Jean Arp
Venus of Meudon,
Bronze CAST 1956/ 1957
48.6 X 13.9 X 10.9 cm



Jean Arp
Evocation of a Form: Human, Lunar,
Spectral,
Bronze
enlarged and cast 1950/57 115.5X
82.3 X 85.0 cm



Jean Arp
Marble Torso Fruit, 1960
74.9 x 38.2 x 28.0 cm



Jean Arp, *Silencieux*, 1942



ז'אן ארפ
סף ירושלים



Balthazar Klossowski de Rola
Balthus
(1908-2001)



Balthazar Klossowski de Rola
Balthus
(1908-2001)
The Guitar Lesson



Balthus

(Balthasar Klossowski de Rola; French, 1908–2001)

The Golden Days 1944–46

Oil on canvas 148.3 x 199.4 cm

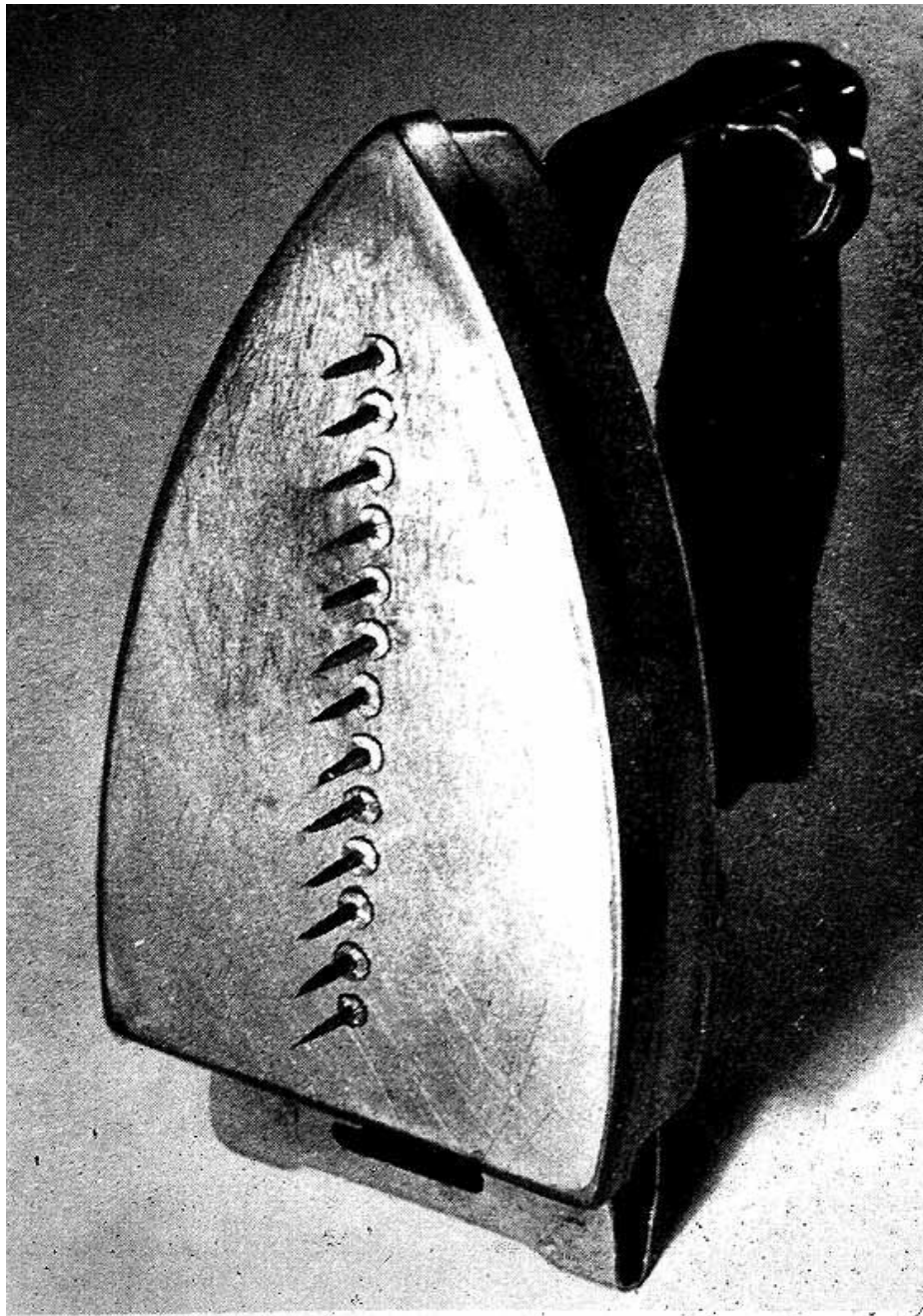
Hirshhorn Museum and Sculpture Garden



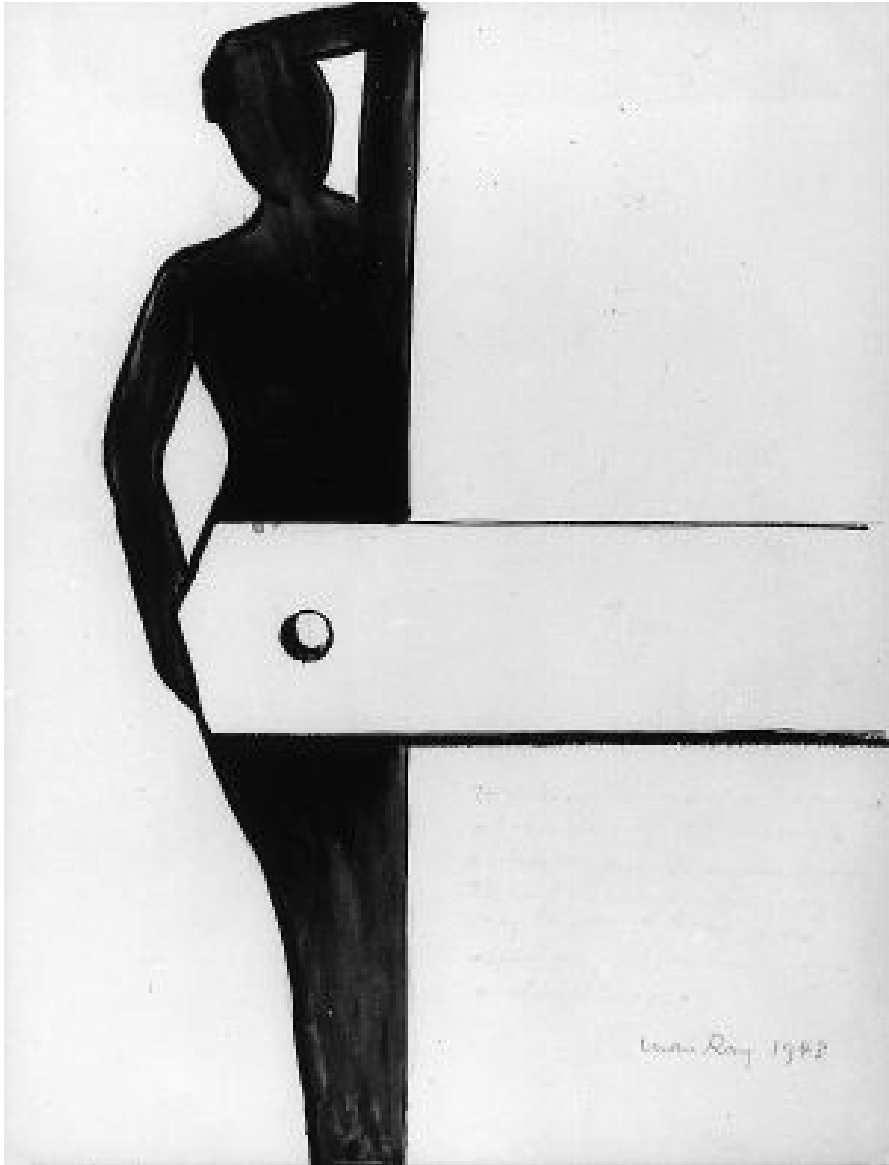
Balthus
(Balthasar Klossowski de Rola;
French, 1908–2001)
The window 1933
Oil on canvas 162.2 x 114.3 cm
Art Museum from Donald Morris
Gallery, Detroit



**Man Ray
(1890-1976)**



Man Ray
(1890-1976)
The gift (le Cadeau) 1921
France



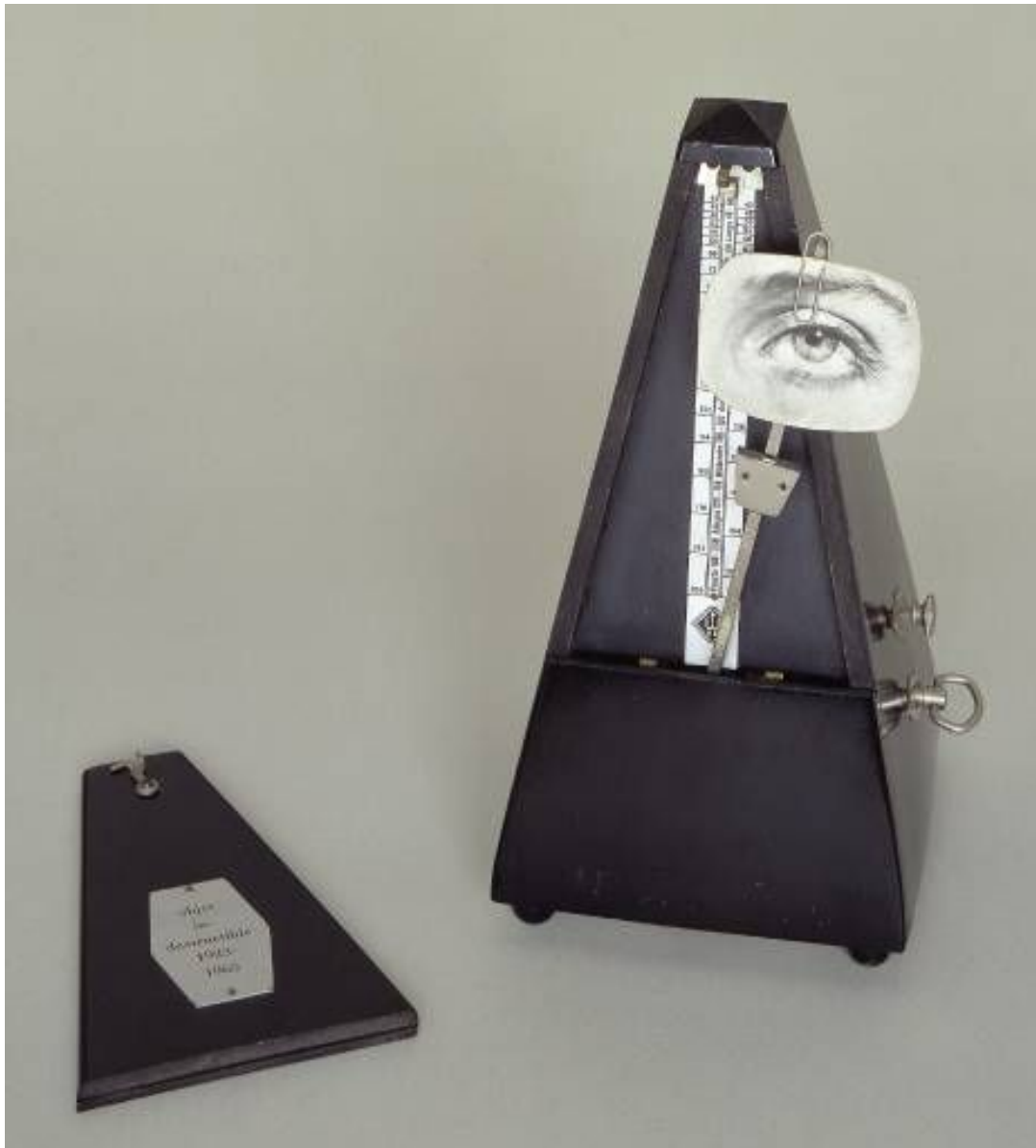
**Man Ray (Emanuel
Rabinovitch)
1890-1976
T-Square**



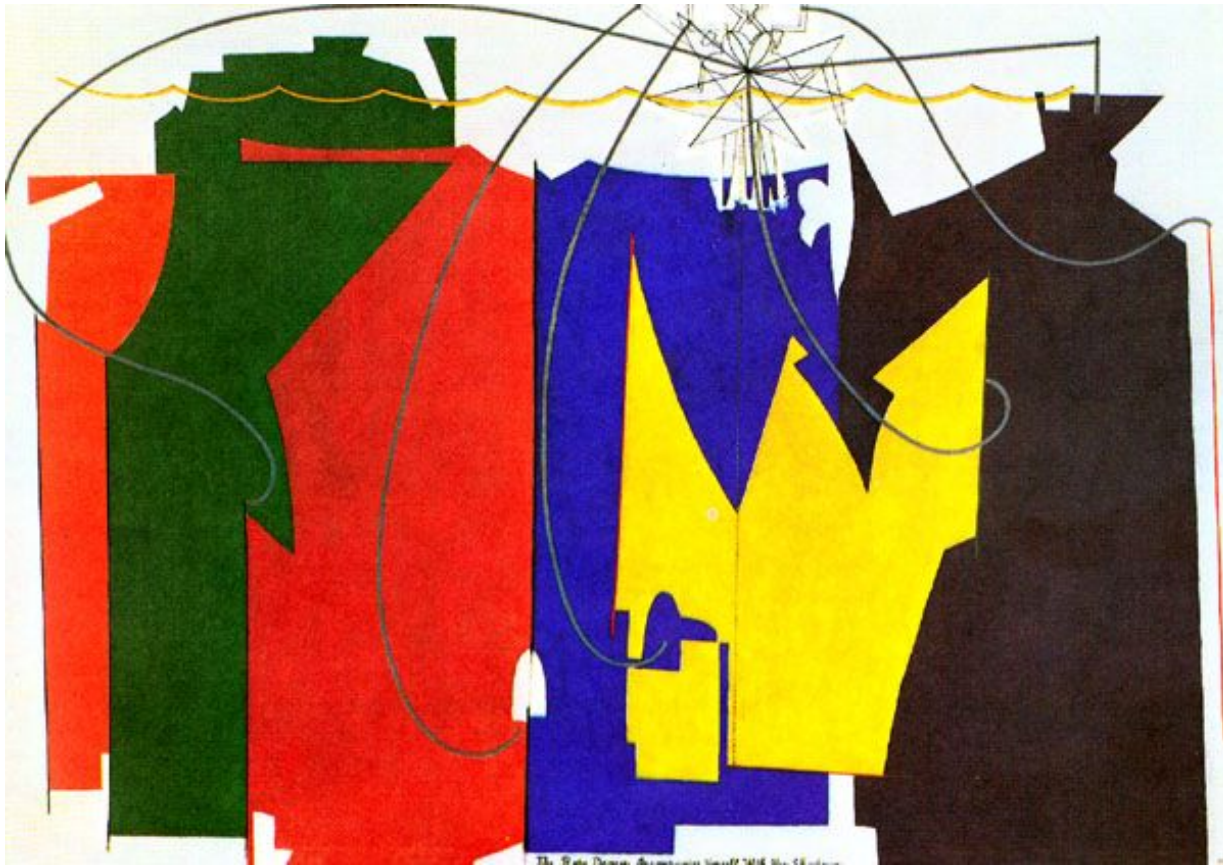
**Man Ray (Emanuel
Rabinovitch)
1890-1976
Julia**



**Man Ray (Emanuel
Rabinovitch)
1890-1976
Salvador Dali**



**Man Ray (Emanuel
Rabinovitch)
1890-1976
Indestructible Object**



**Man Ray (Emanuel Rabinovitch)
1890-1976**

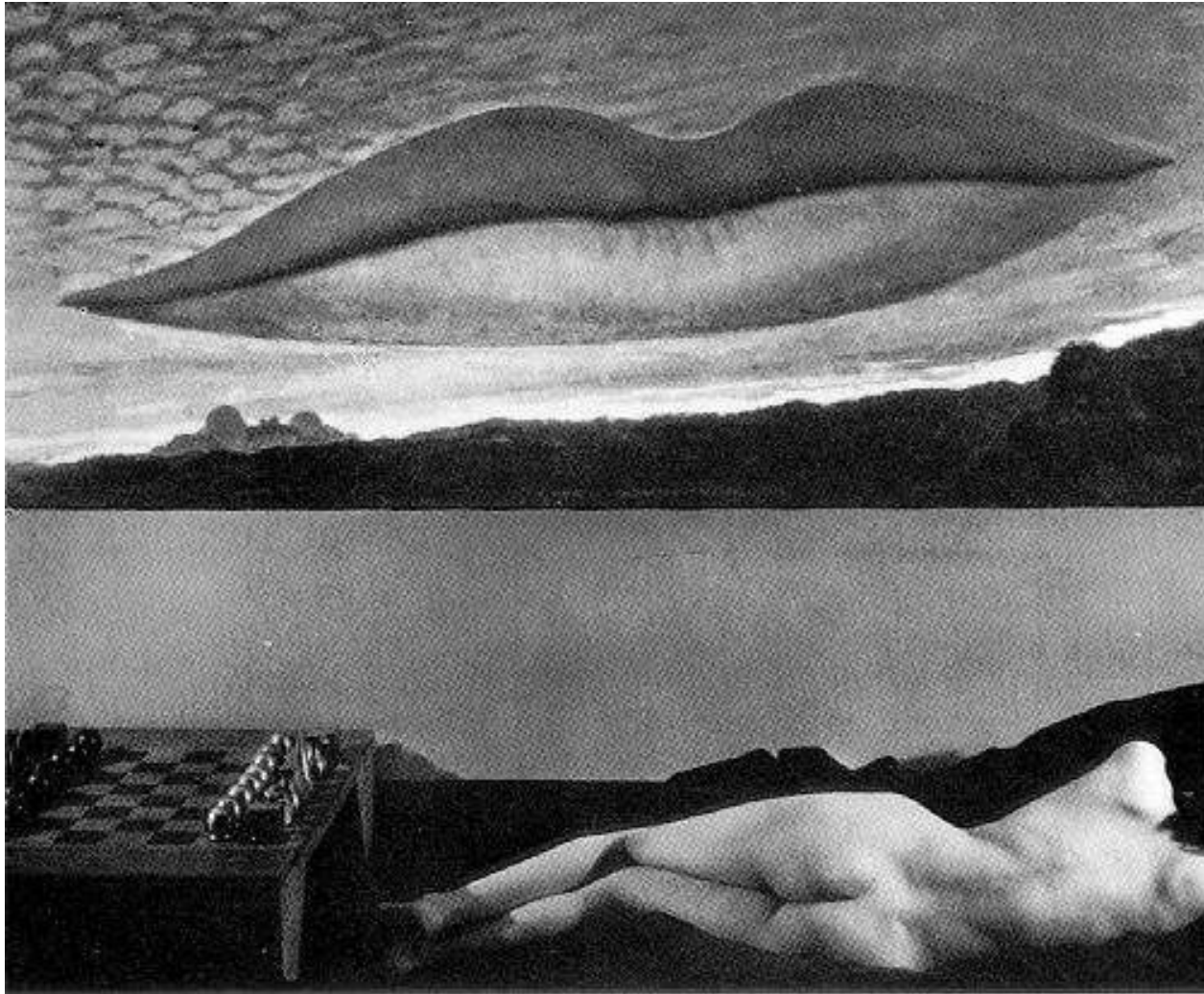
The Rope Dancer Accompanies Herself with Her Shadows



Man Ray (Emanuel Rabinovitch)
1890-1976
Meret Oppenheim



Man Ray (Emanuel Rabinovitch)
1890-1976
Anatomie



**Man Ray (Emanuel Rabinovitch)
1890-1976
A l'heure de l'observatoire - Les amoureux**

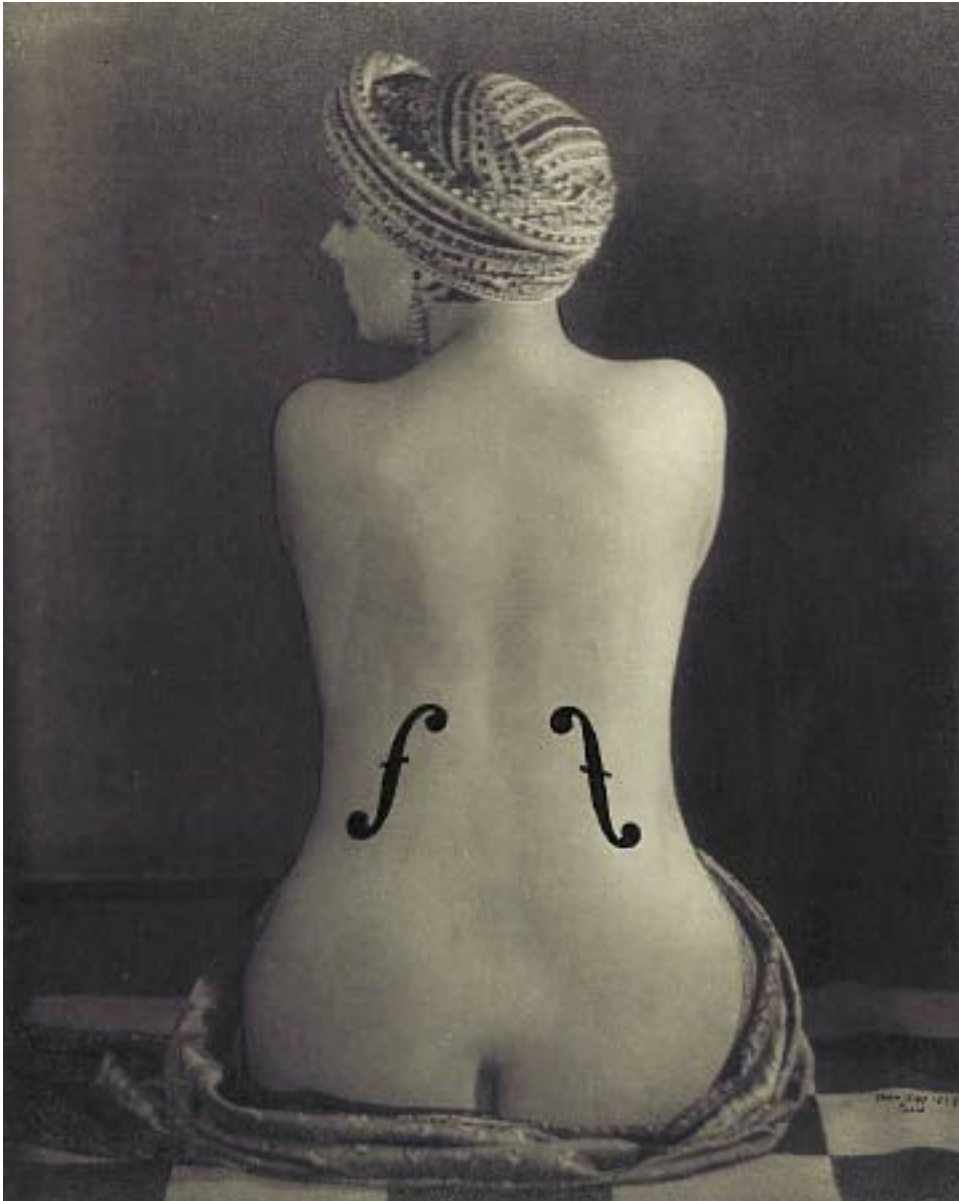


Man Ray (Emanuel Rabinovitch)
1890-1976
Noire et blanche



Copyright 2000 The J. Paul Getty Trust

**Man Ray (Emanuel Rabinovitch)
1890-1976
Les Larmes (Tears)**



**Man Ray (Emanuel
Rabinovitch)**

1890-1976

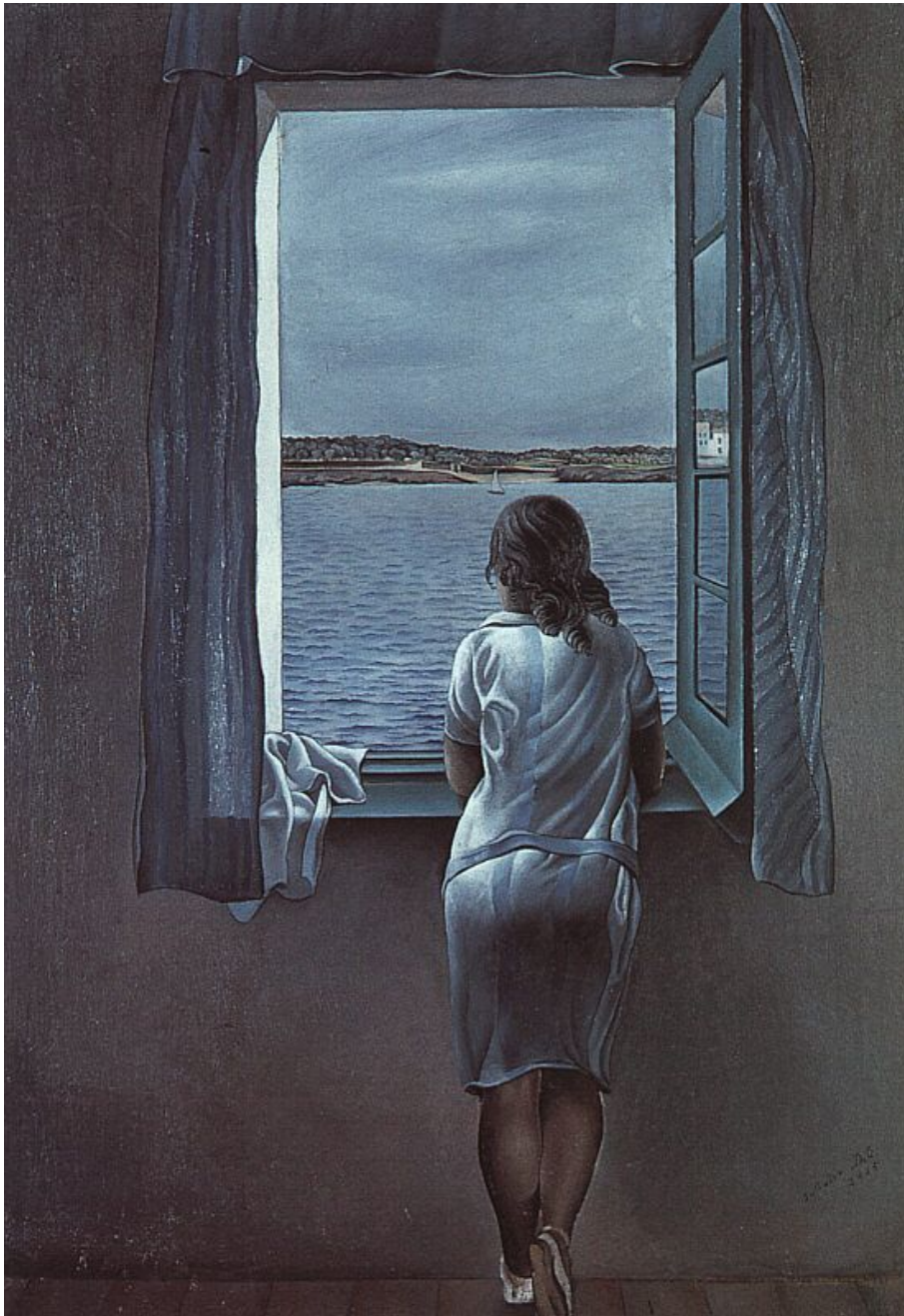
***Le Violon d'Ingres*, 1924**

**preuve aux sels d'argent
et de crayon et encre
noire rehaussée
de Chine**

28,2x 22,5 cm



Salvador Dali
1904-1989



Salvador Dalí
(1904-1989)

Figure at a Window. 1925.
Oil on canvas. 102 x 75 cm.
Museo Nacional Centro de
Arte Reina Sofía, Madrid,
Spain.



Salvador Dalí (1904-1989)
1931 The persistence of Memory
1931. Oil on canvas, 24.1 x 33 cm



Salvador Dalí
(1904-1989)

1935 Archeological Reminiscence of Millet's Angelus



Salvador Dalí (1904-1989)
1935 Archeological Reminiscence
of Millet's Angelus



Millet, Jean-Francois
The Angelus
1857-59
Oil on canvas
55.5 x 66 cm
Musee d'Orsay, Paris



Salvador Dalí (1904-1989)
1935 Archeological Reminiscence
of Millet's Angelus



PICASSO, Pablo 1881 – 1973
***The Tragedy*, 1903**
(Blue Period) Oil on canvas
Chester Dale Collection





A Couple with Their Heads Full of Clouds. 1936. Oil on wood. 87 x 66 cm. Private collection



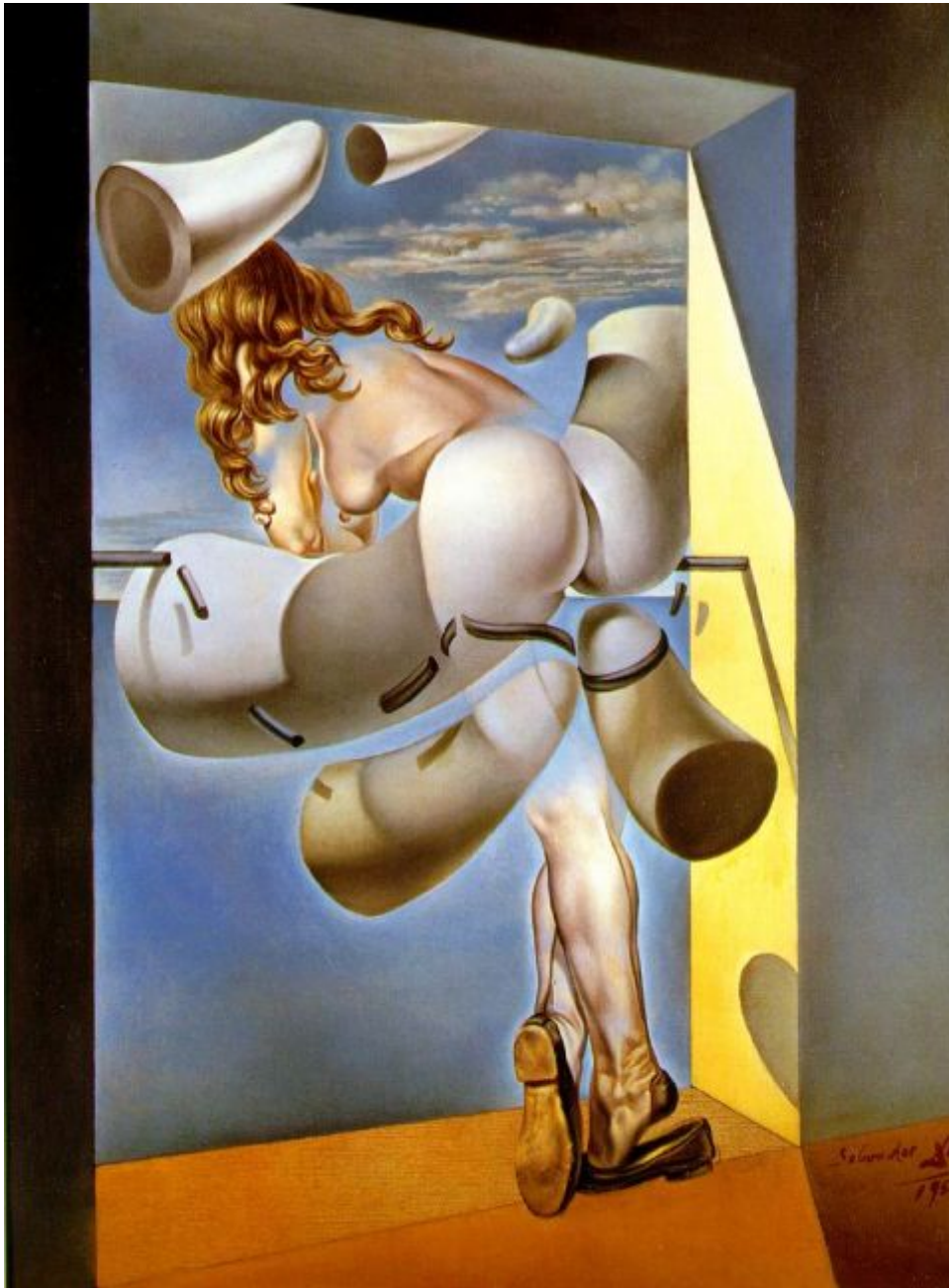
**Salvador Dalí
(1904-1989)
Leda atomica 1949
OIL ON CANVAS
60 X44 CM**



***The Madonna
of Port Lligat.***

1950. Oil on
canvas. 366 x
244 cm.

Fukuoka Art
Museum,
Fukuoka,
Japan.

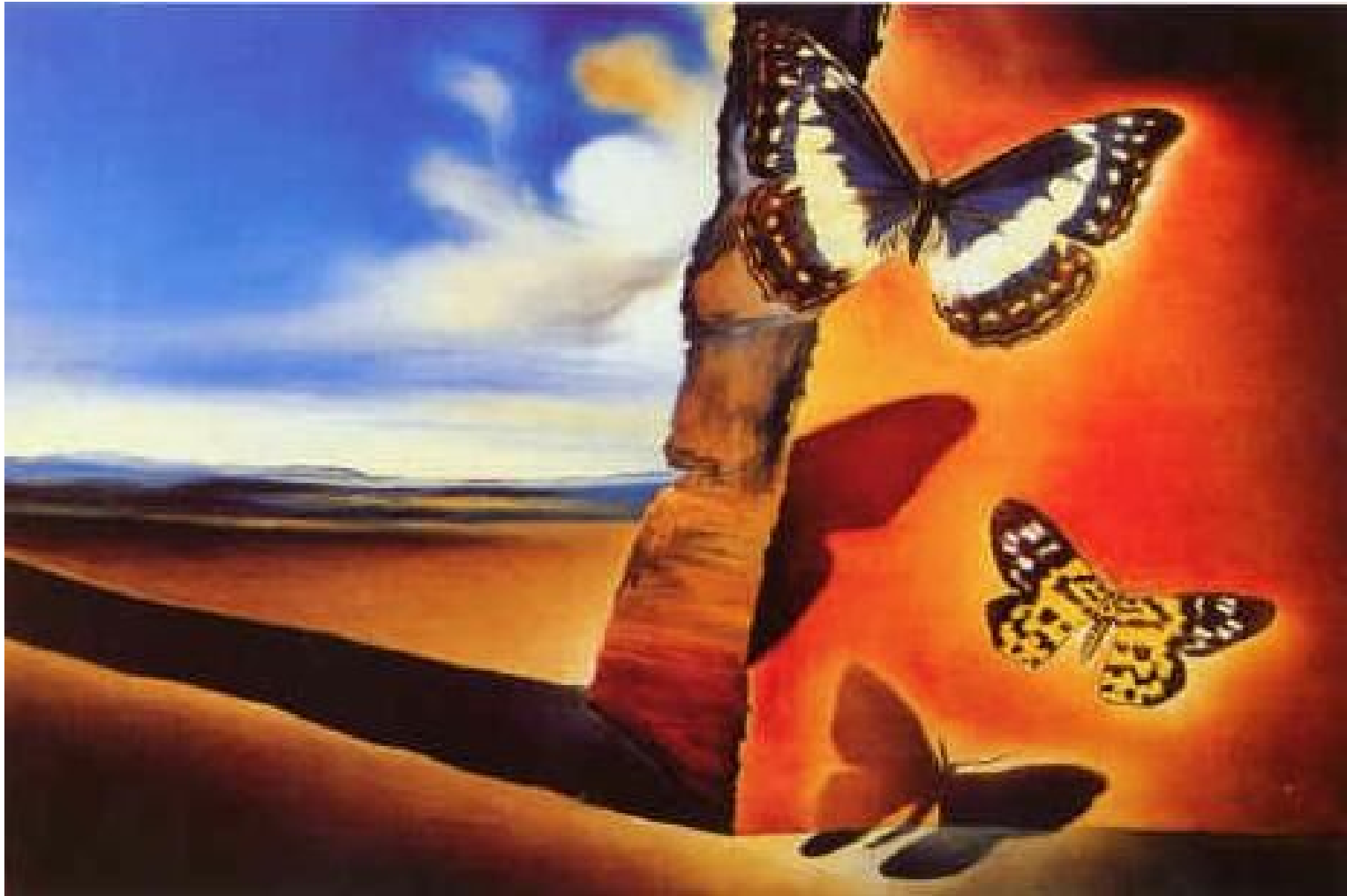


Salvador Dalí
(1904-1989)
1954
Young Virgin
autosodomized
by her own Chastity

Young Virgin Auto-Sodomized by the Horns of Her Own Chastity. 1954. Oil on canvas. 40.5 x 30.5 cm. Private collection.



Salvador Dalí
(1904-1989)
1958
Meditative Rose



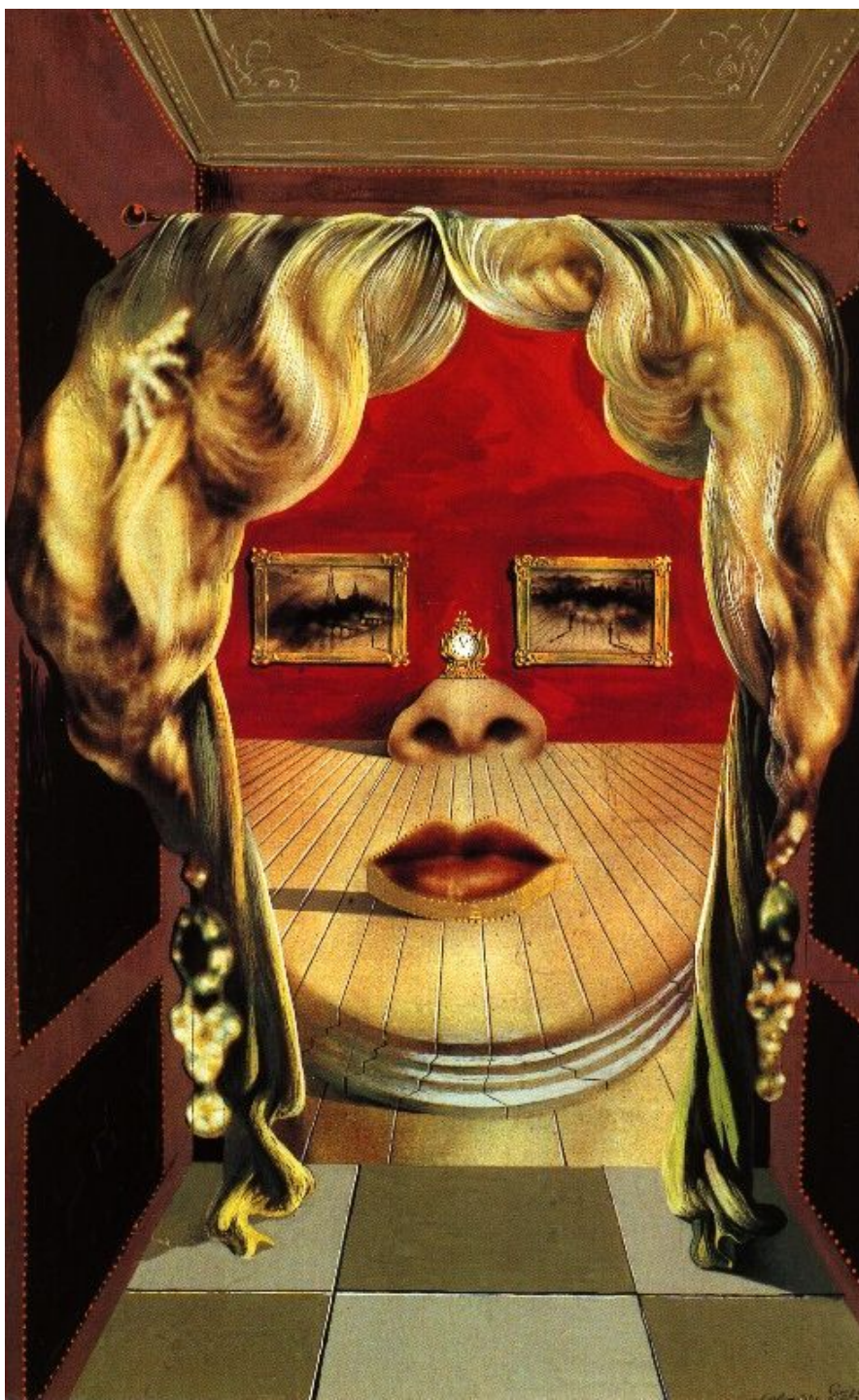
Salvador Dalí
(1904-1989)
1959
Paysage aux Papillons



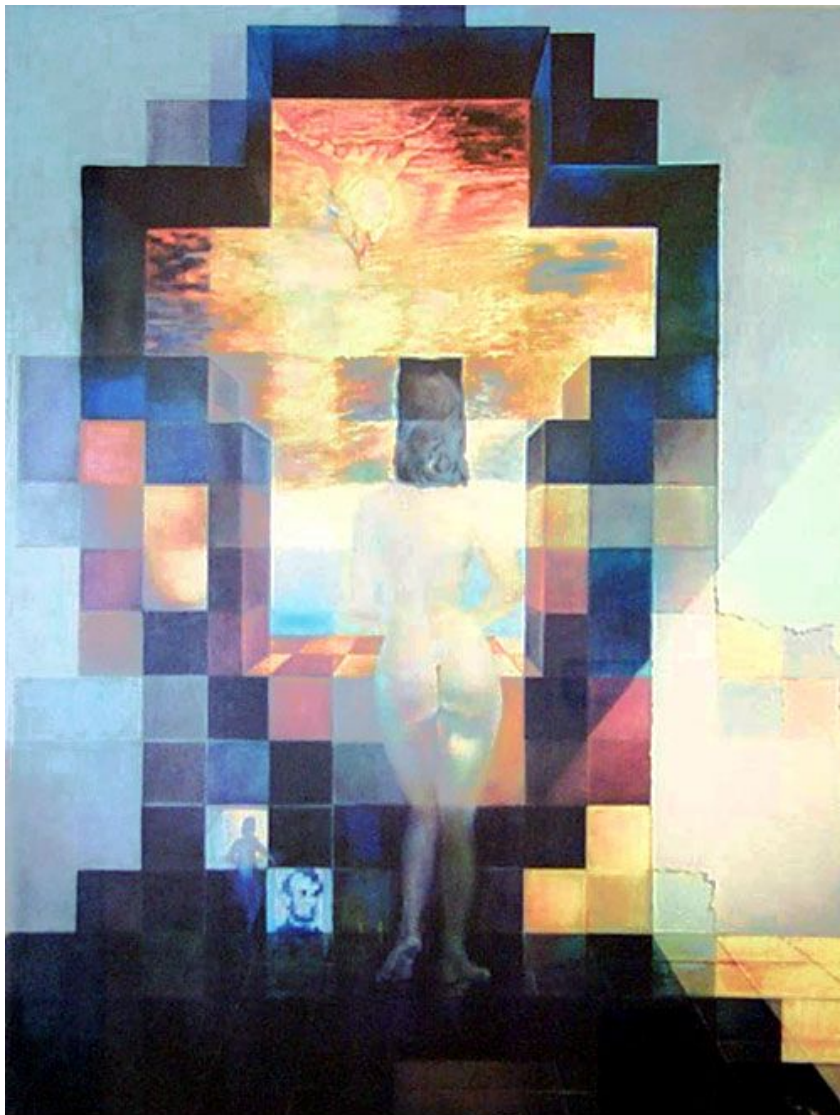
***My Wife, Nude,
Contemplating
Her Own Flesh
Becoming
Stairs, Three
Vertebrae of a
Column, Sky
and
Architecture.***
1945. Oil on
wood panel. 61
x 65 cm. Private
Collection



Salvador DALÍ Spain 1904 – 1989 United States of America 1940-48
Lobster telephone [Aphrodisiac telephone] 1936 painted plaster, telephone
18.0 (h) x 30.5 (w) x 12.5 (d) cm



DALÍ Face of Mae West Which Can Be Used as an Apartment 1935



Salvador Dalí
(1904-1989)
1977
Lincoln in Dalivision



← Viewed from a distance.