

Egon Schiele 1890 -1918 Austria



**Egon Schiele 1890 -1918
Austria**
Cause of death: Influenza



Selfportrait 1919 44.5x30/4 cm



Self Portrait With Black Vase 1911



Schiele, Egon Gerti Schiele 1909
Oil on canvas 140x140 cm
The Museum of Modern Art, New York



EGON SCHIELE
Gerti Schiele in Checkered Cloth



Gerti Schiele in a Plaid Garment
c. 1908–1909 Egon Schiele
Charcoal and tempera 133.03 x 52.39 cm



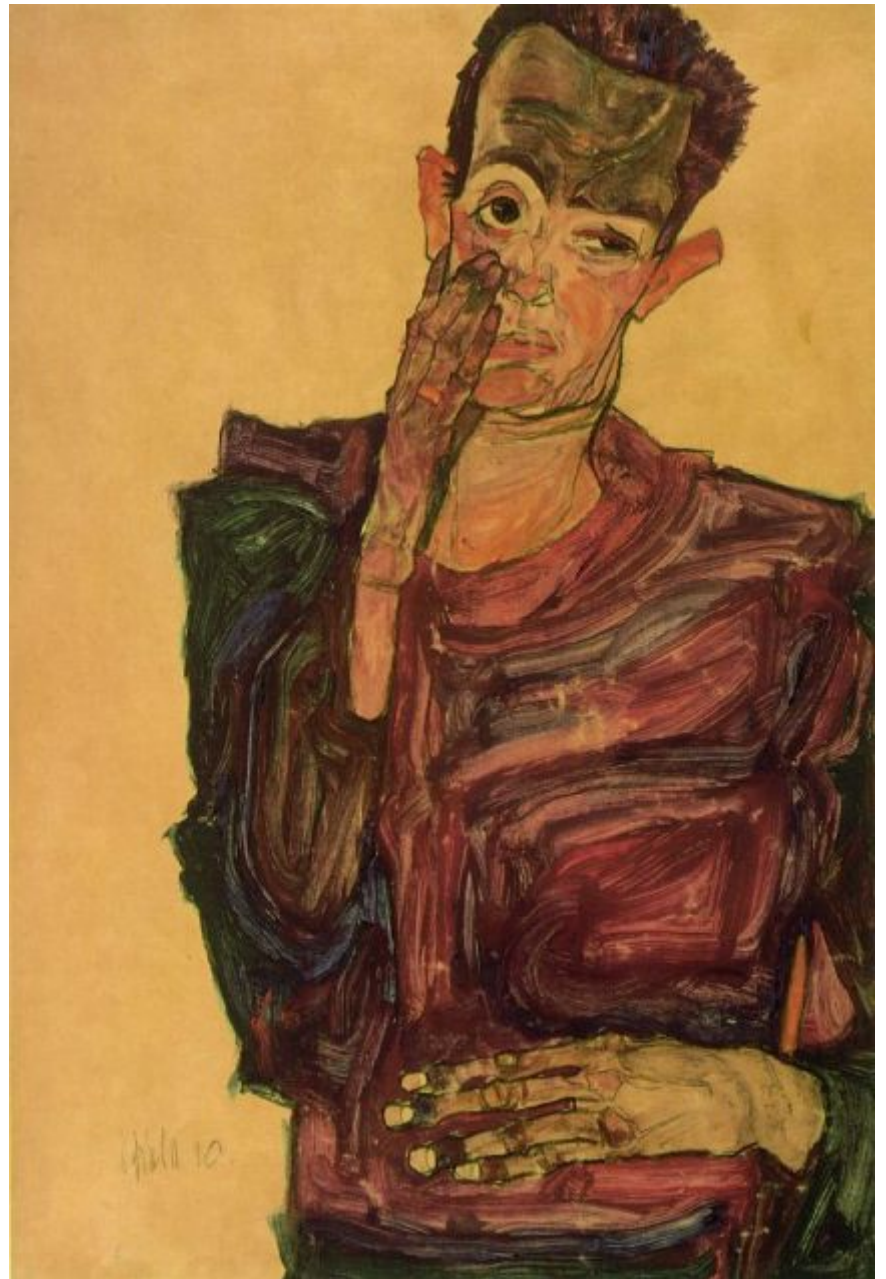
Schiele, Egon Female Nude 1910
Gouache, watercolor and black chalk with
white highlighting 31 x 44 cm
Graphische Sammlung Albertina, Vienna



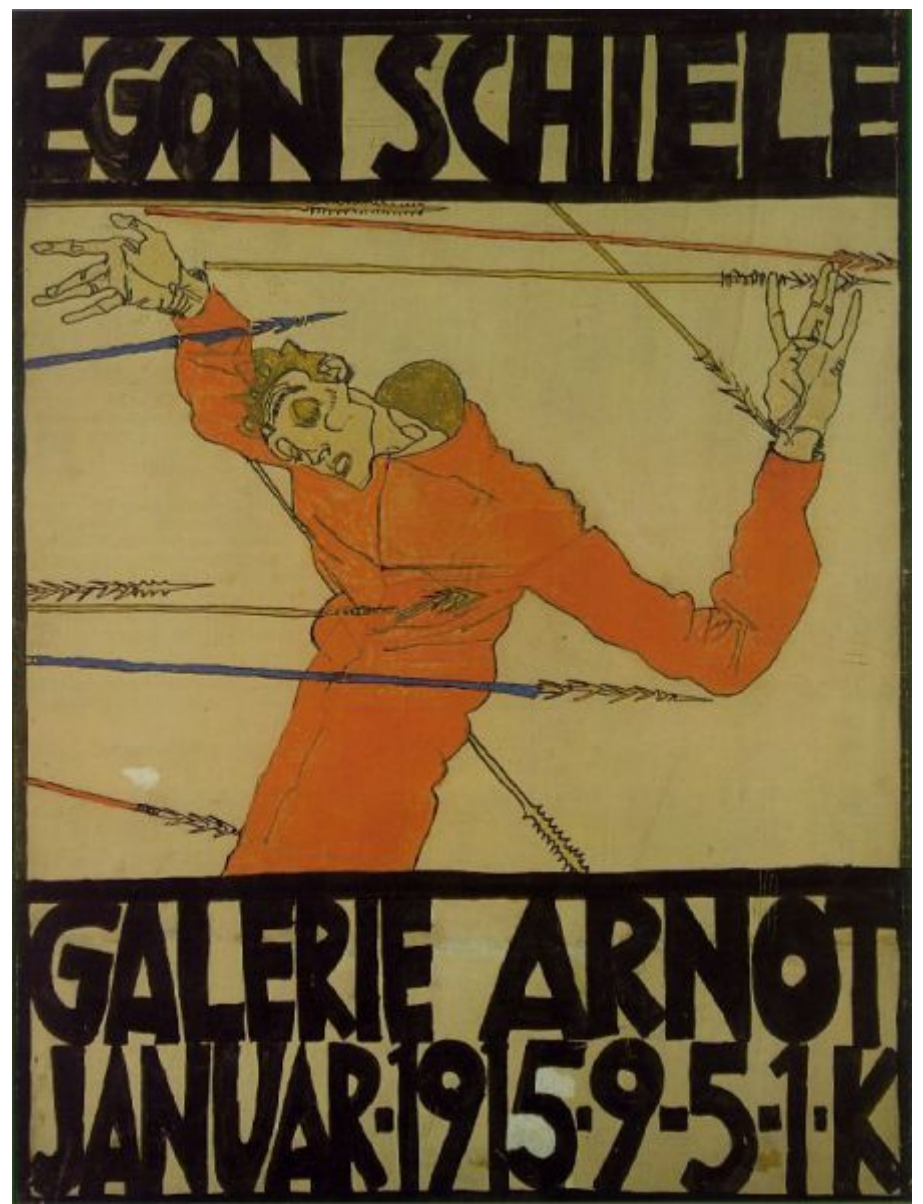
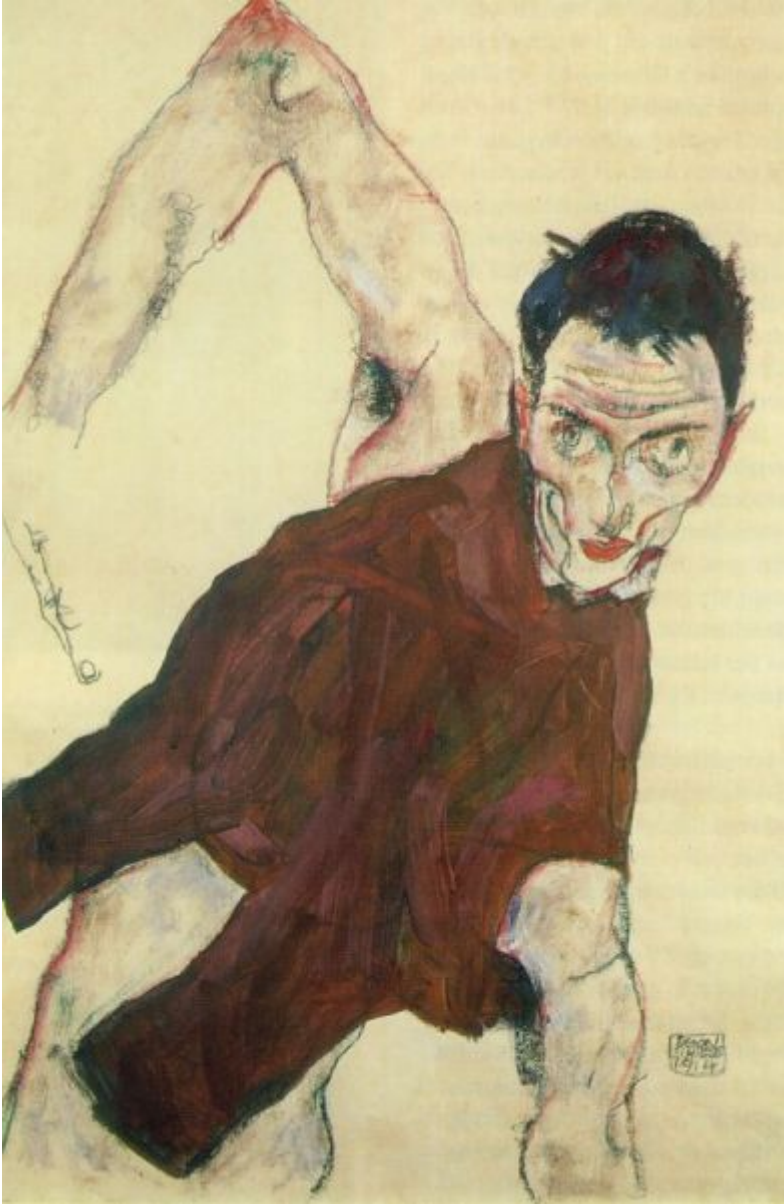
1911 .*Girl with Black Hair* Egon Schiele. Austrian, 1890-1918
Watercolor and pencil on paper, 56.2 x 36.7 cm



Schiele, Egon Self-Portrait Standing 1910
Gouache, watercolor and pencil with white highlighting
56 x 37 cm Graphische Sammlung Albertina, Vienna



1910 Schiele, Egon Self-Portrait Pulling Cheek
Gouache, watercolor and charcoal 44 x 30 cm
Graphische Sammlung Albertina, Vienna



Schiele, Egon 1914
Self-Portrait with Raised Right Elbow
Gouache, watercolor and black chalk 47 x 31 cm
Private collection

Self-Portrait as St. Sebastian 1914/15
(Poster for Arnot Gallery exhibition)
Indian ink and opaque 67x50 cm
Historisches Museum der Stadt Wien, Wien



Schiele, Egon Standing Male Nude with Red Loincloth
Gouache, watercolor and pencil 48 x 32 cm 1914
Graphische Sammlung Albertina, Vienna



Schiele, Egon 1917
Reclining Woman with Green Stockings
Gouache and black crayon on paper 29x46 cm
Private collection



1917 Lovers II - Embrace
100 x 170.2 cm Oil on canvas Österreichische Galerie, Vienna



Schiele, Egon
Portrait of the Artist's Wife,
Seated
1918
Oil on canvas
139 x 109 cm
Osterreichische Galerie,
Vienna



1911 Autumn Trees
79.5x80 cm Oil on canvas
Private collection



1912 Little Tree (Chesnut Tree at Lake Constance)
Watercolor and pencil on paper
45.8 x 29.5 cm Private collection, New York



Egon Schiele, Crescent of houses, 1915