

אמנות המאה העשרים

אקספרסיוניזם

Schiele Egon Marc Franz
Kirchner Ernst Ludwig
Nolde Emil Macke August

John Heartfield 1891-1968

קבוצת הגשר היא קבוצת ציירים אקספרסיוניסטים אשר התקיימה בין השנים 1904 - 1912. תחילתה של קבוצת הגשר היא בהכרות בין האמנים ארנסט לודוויג קירשנר, אריך הקל, הבל, וקרל שמידט-רוטלוף בשנת 1904 בעיר דרזדן. בשנת 1905 הוקמה הקבוצה ביחד עם בלייל. בשנת 1906 הצטרפו לקבוצה הציירים אמיל נולדה, מקס פכשטיין ואוטו מולר.

חברי הקבוצה הוציאו לאור כתב עת - חוברת בטכניקה של הדפס עץ שבה פרסמו את יצירותיהם. בצורה זו, הם רצו שגם לאדם הפשוט תהייה גישה לאמנות. בחוברת הראשונה שהדפיסו נראה גשר (ומכאן שם הקבוצה) המחבר שני חלקים ולצדו כתבו את המניפסט של הקבוצה: הם רוצים ליצור גשר בין כל הכוחות המהפכניים

קבוצת "הפרש הכחול" היא קבוצה של ציירים אקספרסיוניסטים אשר נוסדה ב-1911 וירשה את מקומה של קבוצת "הגשר" שהתפרקה בשנת 1913. קבוצה זו כללה את פרנץ מארק (1880 - 1916), וסילי קנדינסקי (1866 - 1944) אוגוסט מאקה (1887 - 1914), גבריאלה מיטר ואלפרד קובין אלקסיי ג'אוולסקי. אמן נוסף המזוהה עם הקבוצה הוא פאול קליי. הקבוצה החלה את פעילותה ב-1912 בעיר מינכן ולאחר מכן עקרה והחלה לפעול בכפר הציורי "מורנאו" שבאלפים. הקבוצה קיבלה את שמה מתוך יצירת ילדים שנקראה הפרש הכחול, אגדה על אביר היוצא לתקן את עוולות העולם. כמוהו הרגישו חברי הקבוצה שעליהם ליצור זרם חדש ולתקן את העולם מכבלי האמנות המסורתית.



George Grosz 1893 –1959

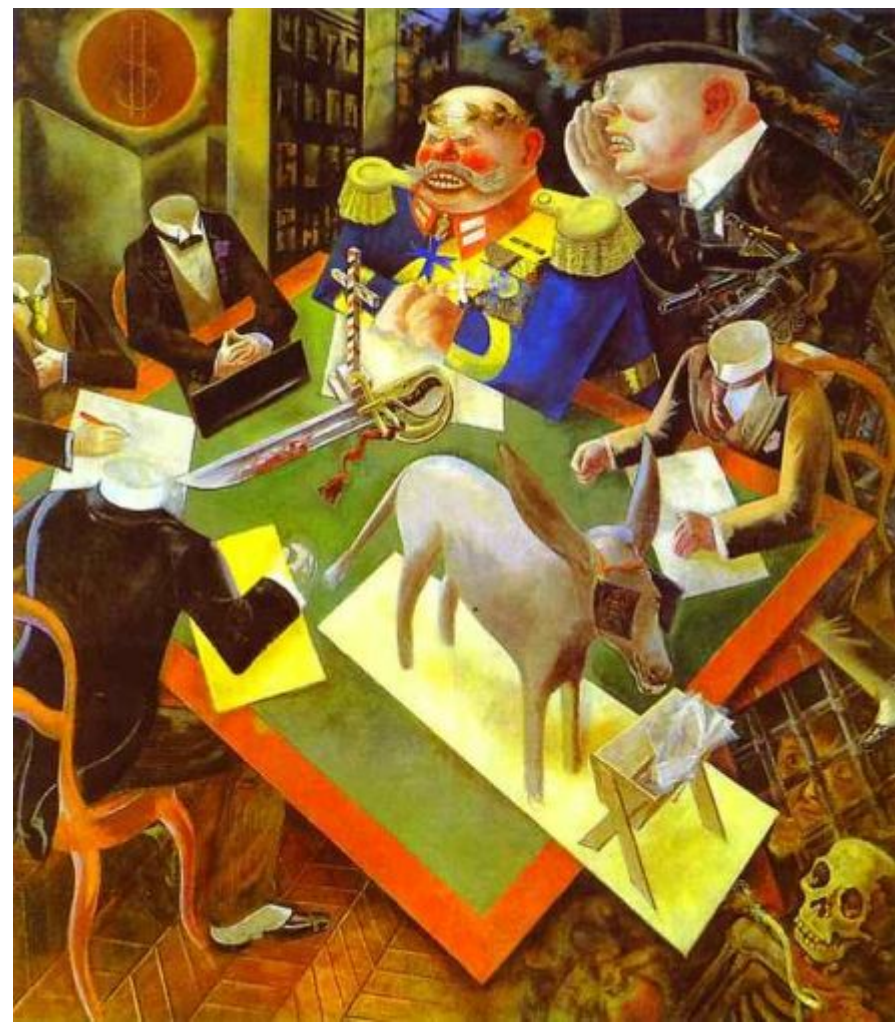


George Grosz, drawn in pen 1919, photo-lithograph published 1920 in the portfolio *God with us* Sheet 48.3 x 39.1 cm. In the collection of the MoMA

Georg Ehrenfried Groß
German, 1893-1959

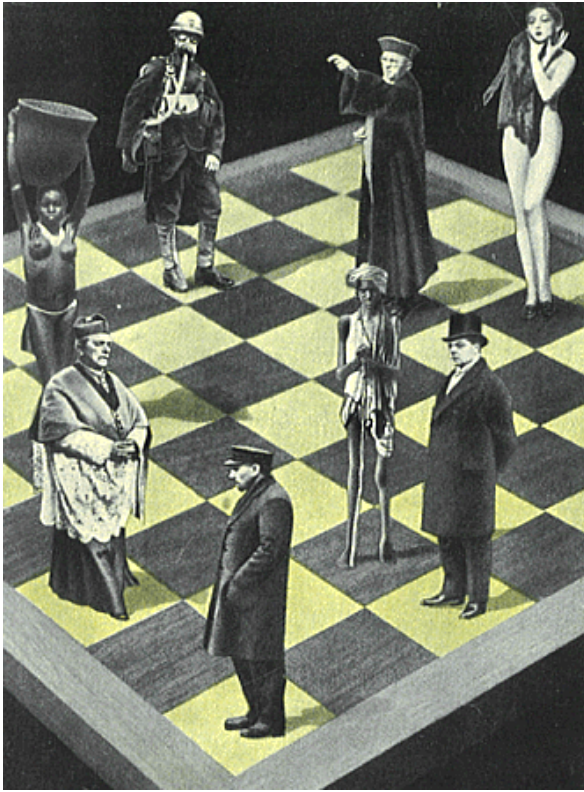


*The Pillars
of Society*
1926
Oil on
canvas.
200 x 108
cm.
Nationalgal
erie, Berlin,



*Eclipse of
Sun*
1926
Oil on
canvas.
210 x 184 cm
Heckscher
Museum,
Huntington,
.NY,





"Die heiligsten Güter". -- 1931



The thousand Year Reich

John Heartfield 1891-1968 German Photomontages



And Yet it Moves" 1943.
A reference to a remark made by Galileo when he was forced to deny his belief that the Earth moved around the sun. Upon his release from the Inquisition, he stamped the Earth with his "foot and said, "And yet it moves



Whoever Reads Bourgeois ' Newspapers Becomes Blind and Deaf: Away With the Stultifying by John Heartfield '!Bandages appeared in the Arbeiter Illustrierte Zeitung (Workers Illustrated News) in ".1930

Egon Schiele 1890 -1918 Austria



**Egon Schiele 1890 -1918
Austria**
Cause of death: Influenza



Selfportrait 1919 44.5x30/4 cm



Self Portrait With Black Vase 1911



Schiele, Egon Gerti Schiele 1909
Oil on canvas 140x140 cm
The Museum of Modern Art, New York



EGON SCHIELE
Gerti Schiele in Checkered Cloth



Gerti Schiele in a Plaid Garment
c. 1908–1909 Egon Schiele
Charcoal and tempera 133.03 x 52.39 cm



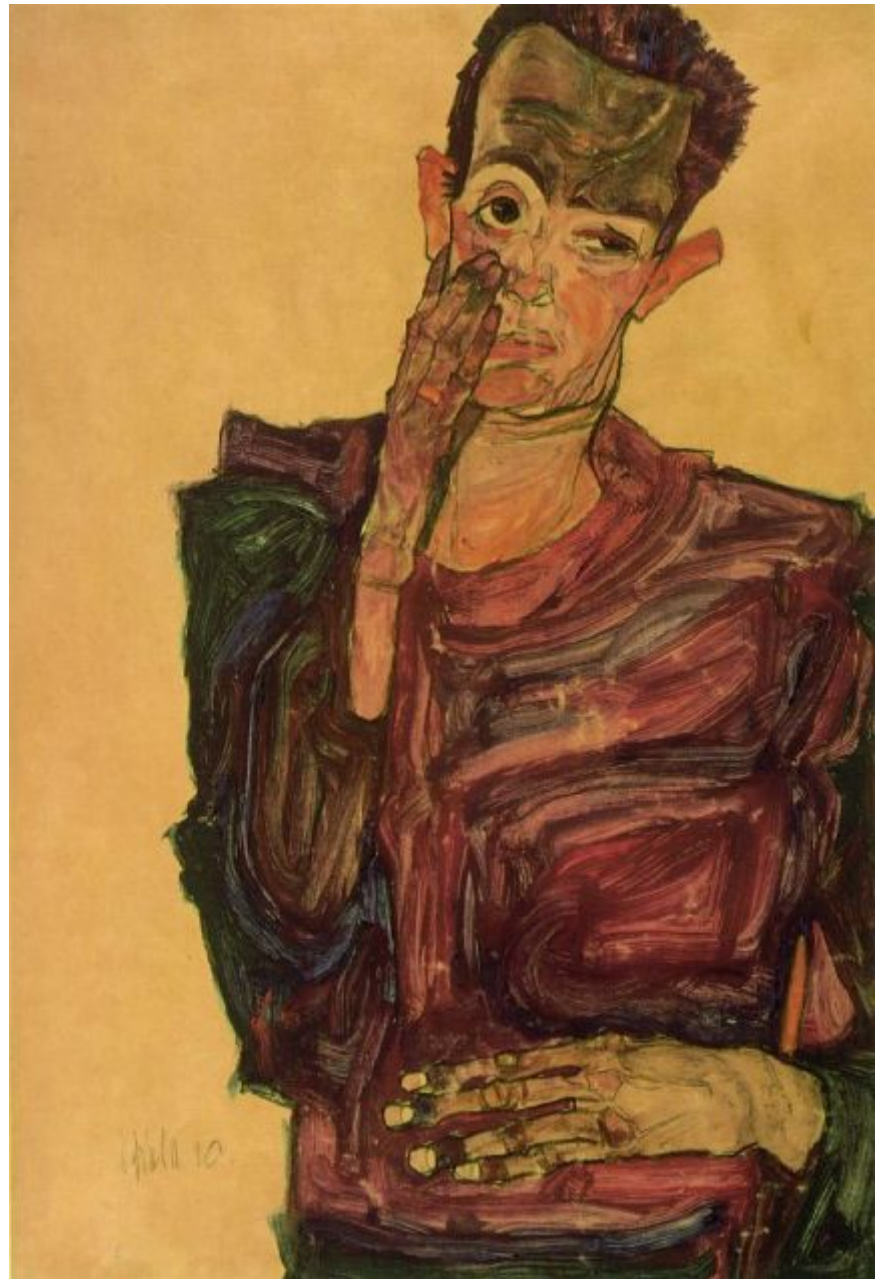
Schiele, Egon Female Nude 1910
Gouache, watercolor and black chalk with
white highlighting 31 x 44 cm
Graphische Sammlung Albertina, Vienna



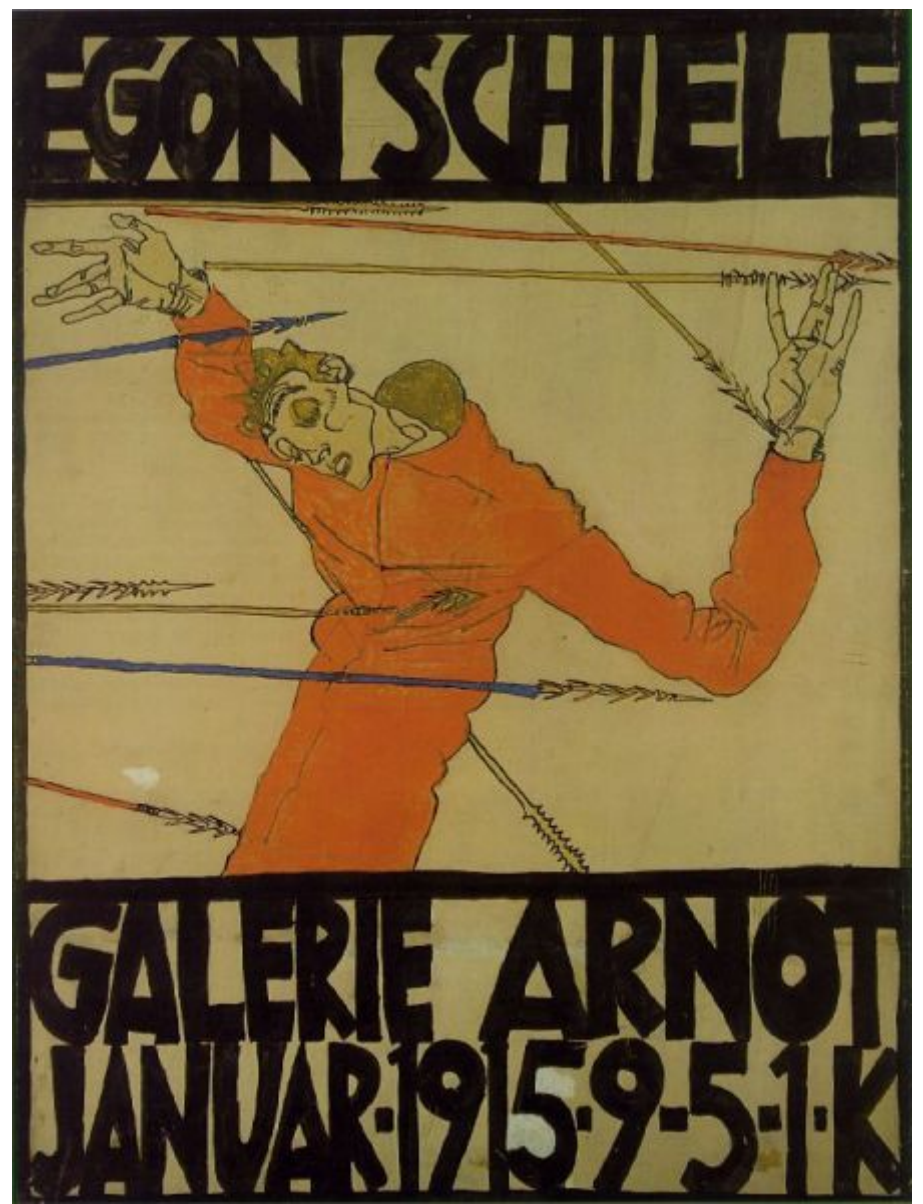
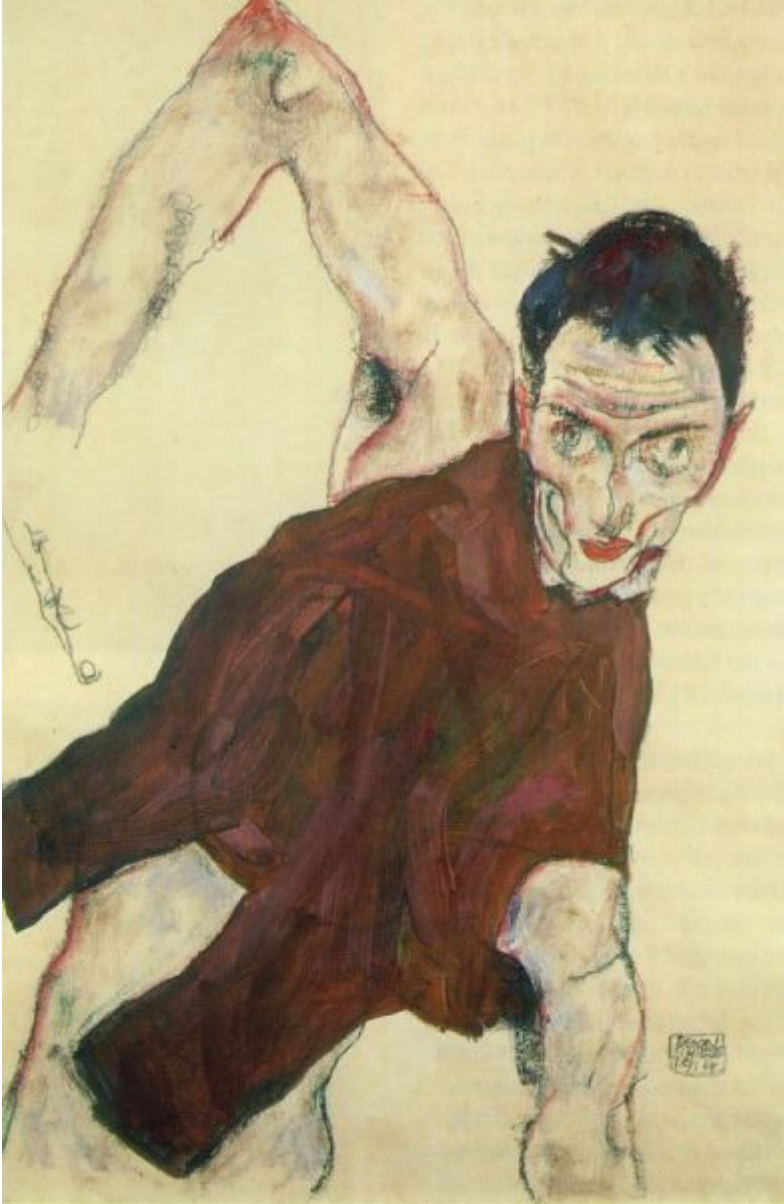
1911 .*Girl with Black Hair* Egon Schiele. Austrian, 1890-1918
Watercolor and pencil on paper, 56.2 x 36.7 cm



Schiele, Egon Self-Portrait Standing 1910
Gouache, watercolor and pencil with white highlighting
56 x 37 cm Graphische Sammlung Albertina, Vienna



1910 Schiele, Egon Self-Portrait Pulling Cheek
Gouache, watercolor and charcoal 44 x 30 cm
Graphische Sammlung Albertina, Vienna



Schiele, Egon 1914
Self-Portrait with Raised Right Elbow
Gouache, watercolor and black chalk 47 x 31 cm
Private collection

Self-Portrait as St. Sebastian 1914/15
(Poster for Arnot Gallery exhibition)
Indian ink and opaque 67x50 cm
Historisches Museum der Stadt Wien, Wien



Schiele, Egon Standing Male Nude with Red Loincloth
Gouache, watercolor and pencil 48 x 32 cm 1914
Graphische Sammlung Albertina, Vienna



Schiele, Egon 1917
Reclining Woman with Green Stockings
Gouache and black crayon on paper 29x46 cm
Private collection



1917 Lovers II - Embrace
100 x 170.2 cm Oil on canvas Österreichische Galerie, Vienna



Schiele, Egon
Portrait of the Artist's Wife,
Seated
1918
Oil on canvas
139 x 109 cm
Osterreichische Galerie,
Vienna



1911 Autumn Trees
79.5x80 cm Oil on canvas
Private collection



1912 Little Tree (Chesnut Tree at Lake Constance)
Watercolor and pencil on paper
45.8 x 29.5 cm Private collection, New York



Egon Schiele, Crescent of houses, 1915

Franz Marc German, 1880–1916



Der Blaue Reiter - The Blue Rider 1912
Illustrated by: Franz Marc, German, 1880–1916



Marc, Franz Dog Lying in the Snow
1910/1 Oil on canvas
62 x 105 cm Stadelsches Kunstinstitut,
Frankfurt



1909/1910 , *Siberian Dogs in the Snow*
oil on canvas, 80.5 x 114 cm



1911 Marc Franz Blue Horse I
Oil on canvas 84 x 112 cm
Stadtische Galerie im Lenbachhaus, Munich



Horses Resting 1911
Franz Marc, German, 1880–1916
print 16.8 x 22.7 cm



Marc, Franz
The Yellow Cow 1911
Oil on canvas 140 x 189 cm
Guggenheim Museum, New York



Franz Marc. *The World Cow* Oil on canvas, 70.7 x 141.3 cm 1913



Marc, Franz
1912 Deer in the Woods II
Oil on canvas 110 x 80 cm
Stadtische Galerie im Lenbachhaus, Munich



.Franz Marc "Grazing Horses IV"



Marc, Franz *The fate of the animals* 1913
Oil on canvas 196 x 266 cm Kunstmuseum, Basle



Franz Marc. German, 1880-1916
Blue Horse with Rainbow 1913
Watercolor, gouache and pencil on paper
16.2 x 25.7 cm



Marc, Franz Cats 1913
Oil on canvas 72 x 102 cm
Kunstsammlung Nordrhein-Westfalen, Dusseldorf



Zwei Katzen, blau und gelb, 1912
Öl auf Leinwand
Höhe 74 cm, Breite 98 cm



Franz Marc: Tiger / Originalholzschnitt

1880 - 1916
Tiger 1912 Franz Marc
Print, Woodcut on wove paper, 19.84 x 23.97 cm



Franz Marc: Pferde / Originalholzschnitt

1912, *Horses*
Print, Woodcut on wove paper,
13.33 x 9.04 cm



Marc, Franz
1913 Stables
Oil on canvas 73x157 cm
Solomon R. Guggenheim Museum, New York



Marc, Franz Fighting Forms 1914
Oil on canvas 91 x 131 Staatsgalerie moderner Kunst, Munich



1914 Rehe im Wald II Franz Marc
Öl/Leinwand 110x 100,5 cm
Karlsruhe, Staatliche Kunsthalle



1913 ,Franz Marc Four Foxes
Watercolor and chalk on paper
44.4 x 38.7 cm

Ernst Ludwig Kirchner. German, 1880-1938

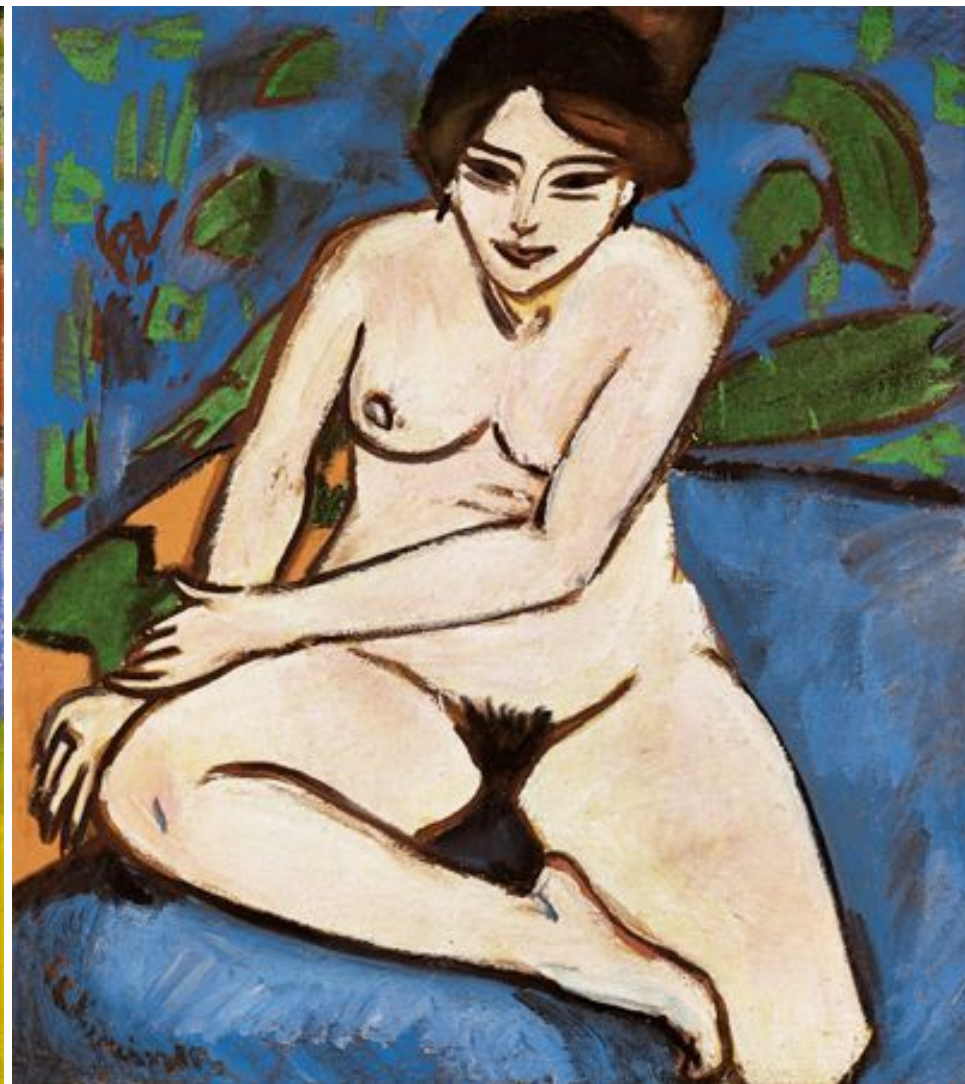


Self-Portrait with Pipe 1914
Ink, crayon, watercolor and gouache on
paper 14 x 9.2 cm





Kirchner, Ernst Ludwig
Girl Under a Japanese Parasol c. 1909
Oil on canvas 92x80 cm
Kunstsammlung Nordrhein-Westfalen, Dusseldorf



Ernst Ludwig Kirchner,
Akt auf blauem Grund, 1911, Öl auf Leinwand



.Ernst Ludwig Kirchner. German, 1880-1938
***Winter Moonlit Night* 1919**
;Woodcut, 30.5 x 29.5 cm



1922 *Street Scene*
Woodcut 70.6 x 38 cm



Dancer with Raised Skirt
Brücke published 1910. from the portfolio
One woodcut from a portfolio of two woodcuts, one
drypoint, and one woodcut cover 25.2 x 34.5 cm



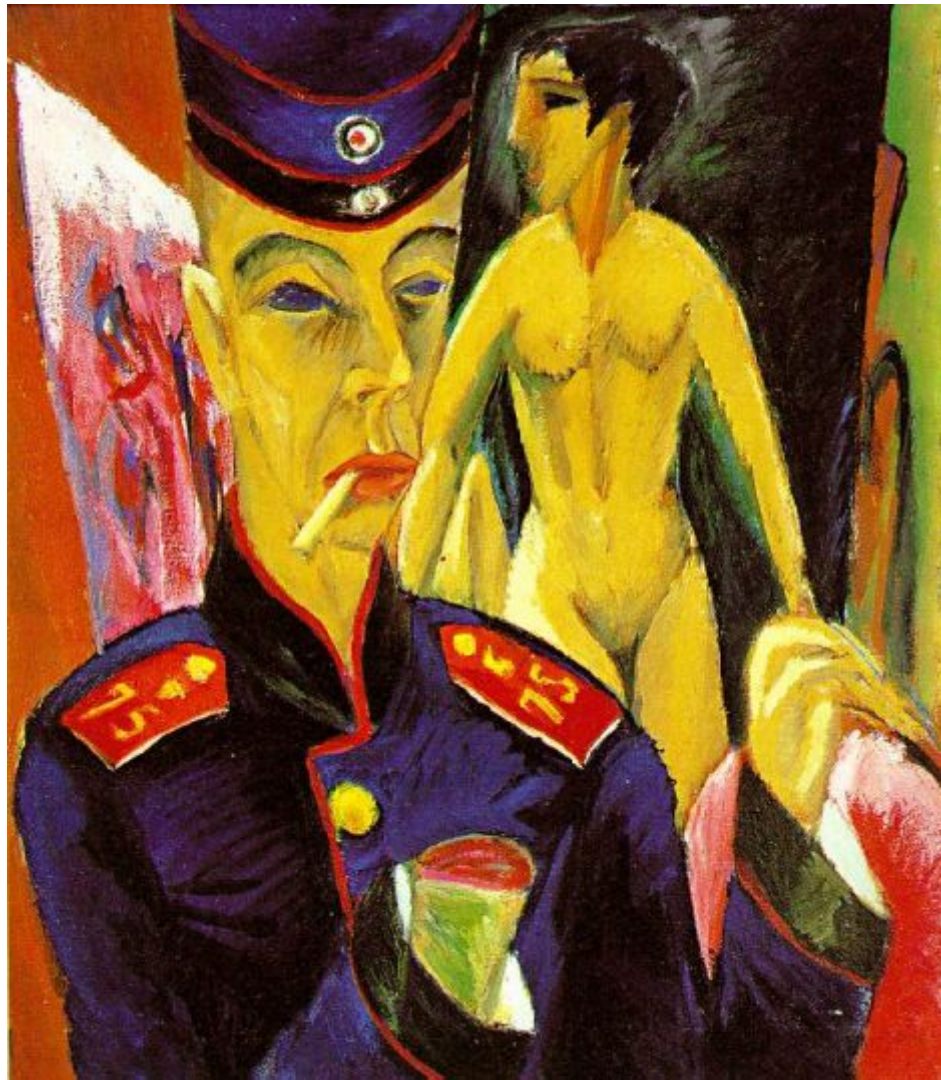
Dance Training 1911
Ernst Ludwig Kirchner
altered 1920
Oil on canvas 119.38 x 89.54 cm



Ernst Ludwig Kirchner. (German, 1880-1938)
1913 .*Street, Berlin* .
Oil on canvas 120.6 x 91.1 cm



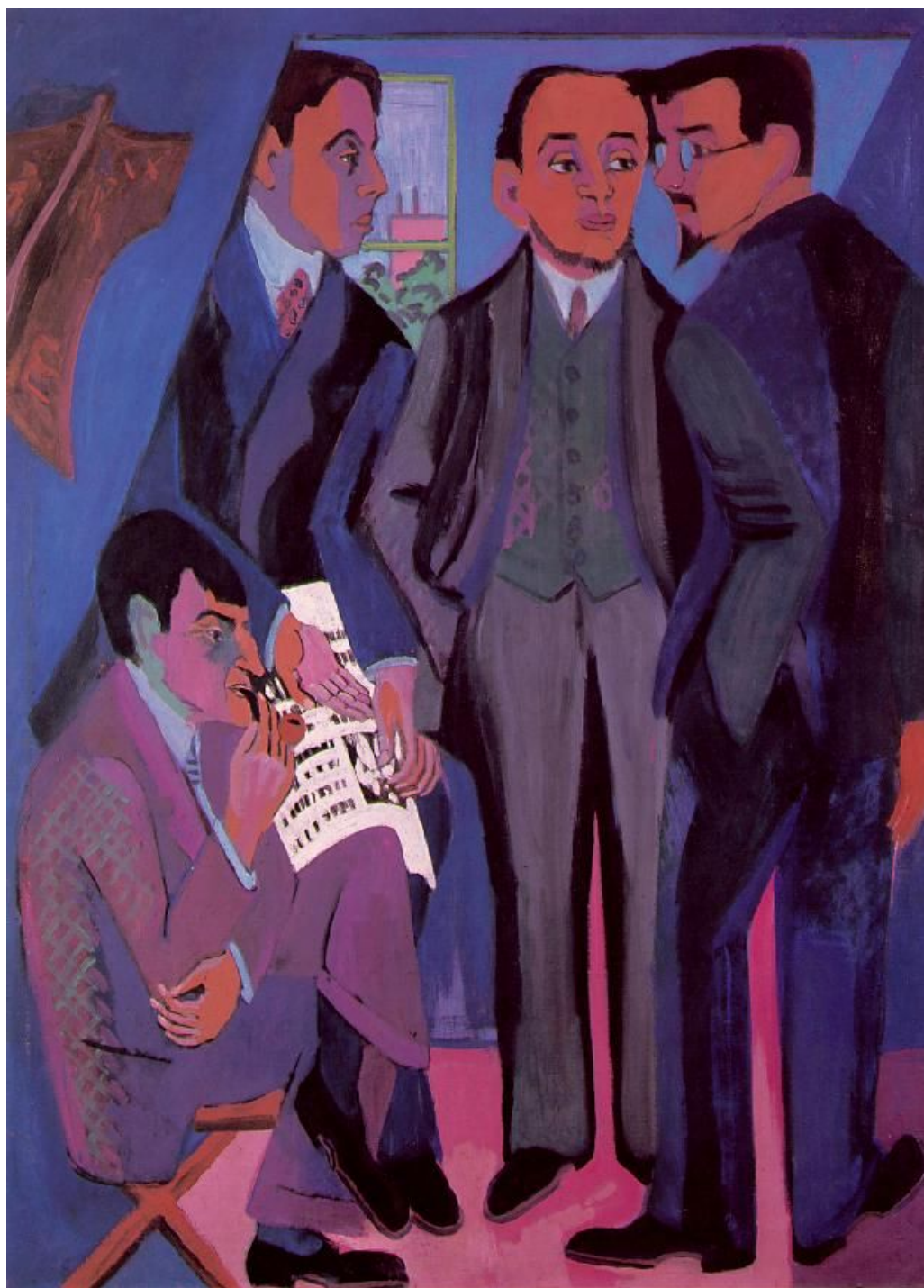
Kirchner, Ernst Ludwig
1914 *Two Women in the Street*
Oil on canvas 120x91 cm Kunstsammlung
Nordrhein-Westfalen, Dusseldorf



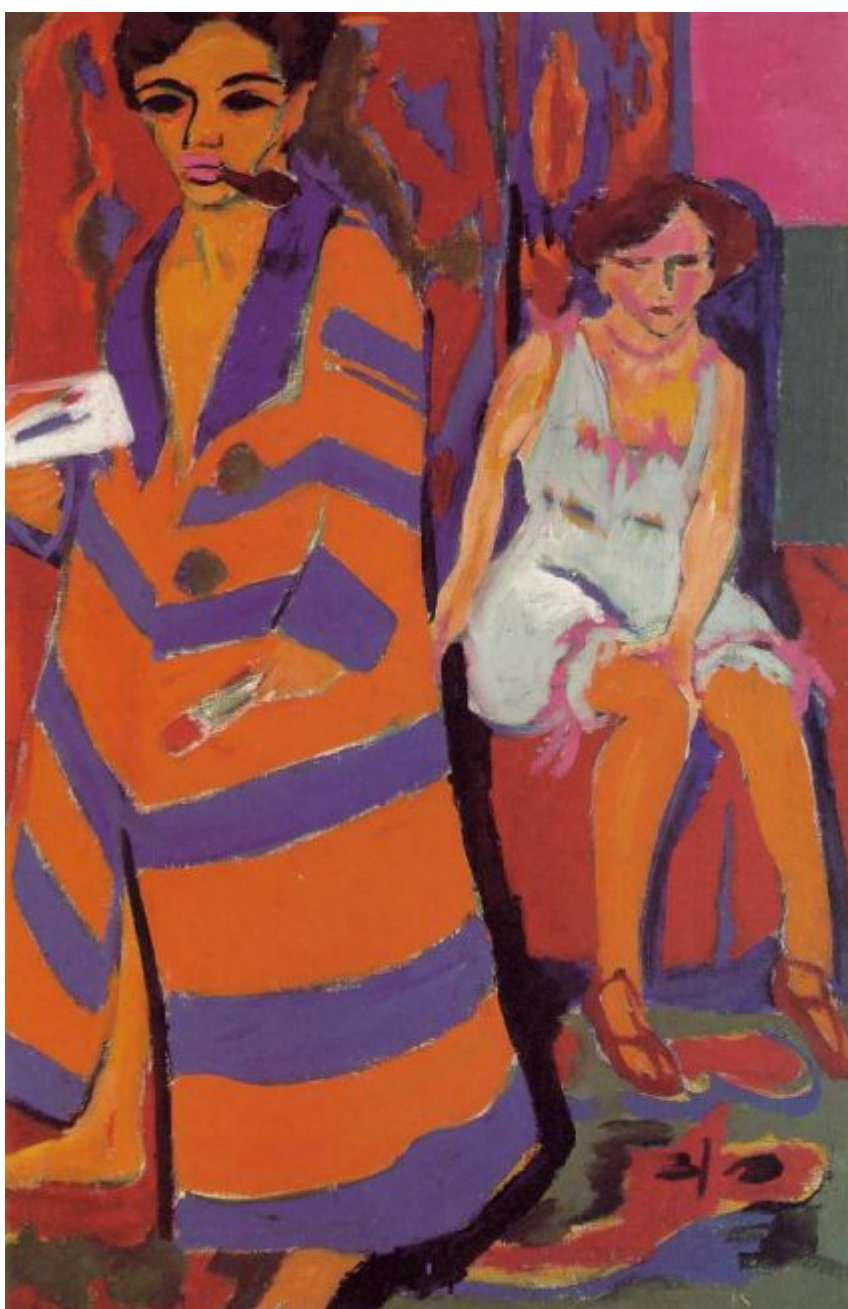
Kirchner, Ernst Ludwig
Selbstbildnis als Soldat 1915
Oil on canvas 69x61 cm
Allen Memorial Art Museum, Oberlin
College, Ohio



.1915 .Evening Patrol
Lithograph, 54.5 x 63.5 cm



Kirchner, Ernst Ludwig
A Group of Artists: Otto
Mueller, Kirchner, Heckel,
Schmidt-Rottluff
1926-27
Oil on canvas
168x126 cm
Museum Ludwig, Cologne



Kirchner, Ernst Ludwig
1910/1926 Self-Portrait with Model
Oil on canvas 150x100 cm Kunsthalle, Hamburg



(1936) .Artist and Model
.Woodcut, 49.9 x 36.5 cm



Modern Bohemia 1924
Ernst Ludwig Kirchner
Oil on canvas 165.42 x 125.1 cm



1924 *Modern Bohemia*
Woodcut 54 x 84.5 cm



Portrait of Ludwig Schames •
Ernst Ludwig Kirchner 1917-18
Woodcut 56.5x27.3 cm



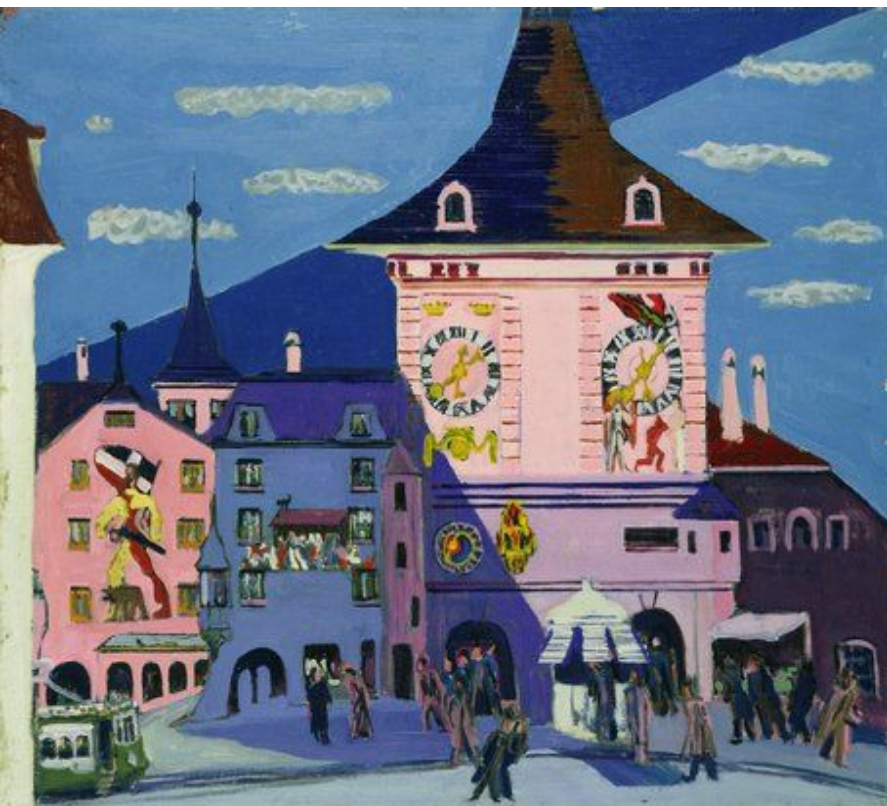
Portrait of Dr. Redslob Ernst Ludwig Kirchner 1924
Drypoint 30 x 25.08 cm



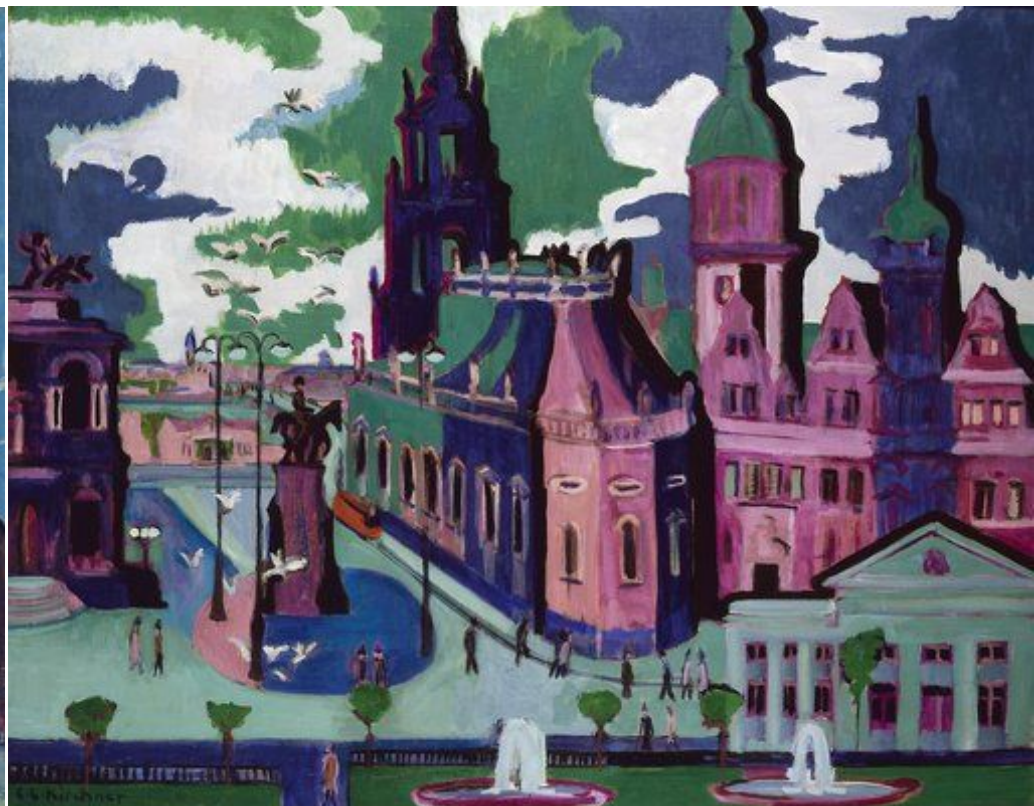
Ernst Ludwig Kirchner. German, 1880-1938
Umbra vitae by Georg Heym. 1924.
Illustrated book with fifty woodcuts 23 x 15.6 cm



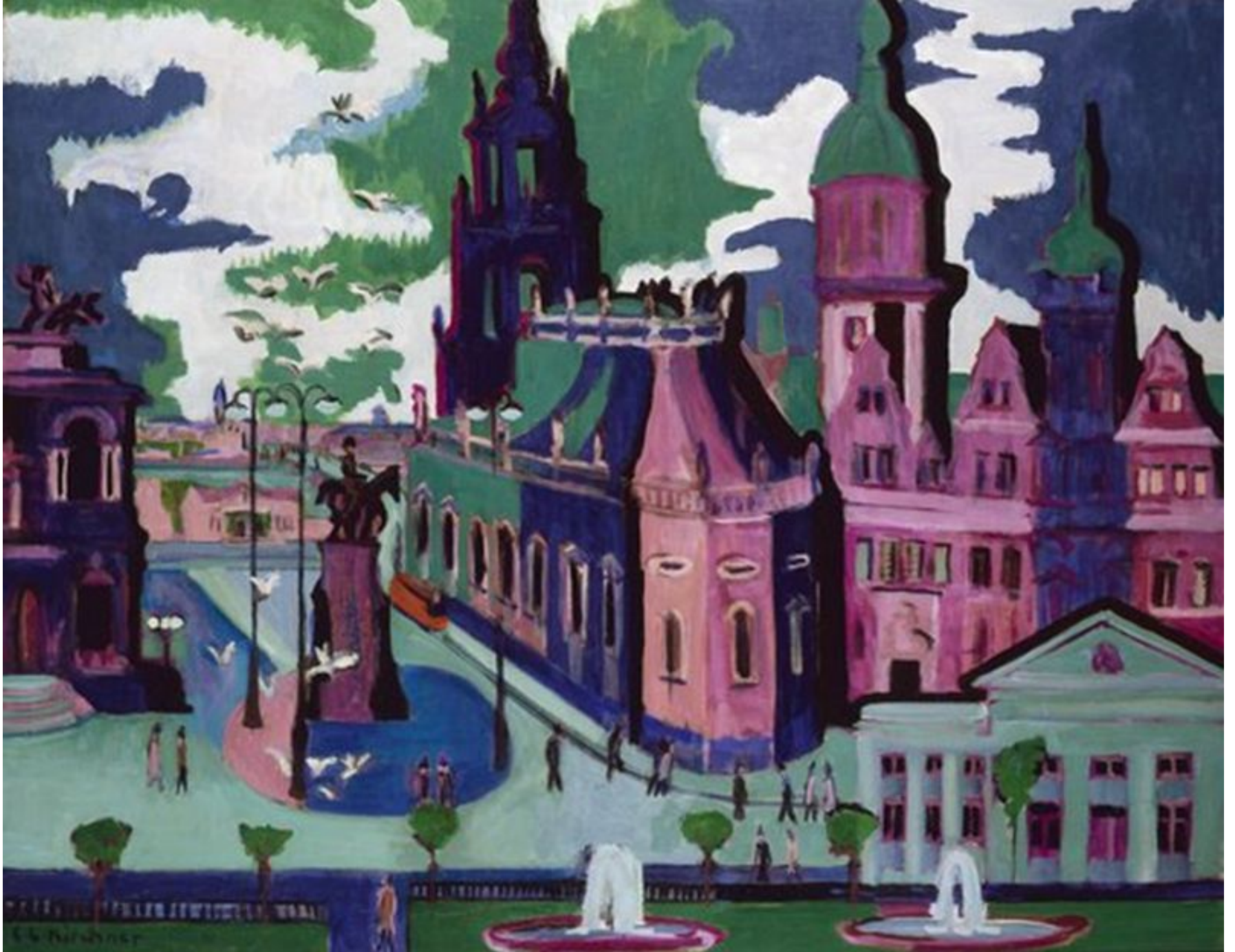
Nude Girl in the Bath 1909
Woodcut on paper, 28.5 x 34.5 cm



Bern with Belltower
1935 Ernst Ludwig Kirchner
Oil on canvas 70.5 x 80.6 cm



View of Dresden: Schlossplatz
1926 Ernst Ludwig Kirchner
120x149.9 cm Oil on canvas



Ernst Ludwig Kirchner View of Dresden: Schlossplatz 1926 120x149.9 cm Oil on canvas



**Bern with
Belltower
1935 Kirchner
Oil on canvas
70.5X80.6 cm**



Head Ernst Ludwig Kirchner. German, 1880-1938
Woodcut 35.2 x 31.8 cm 1929 *Head of Hans Arp*



Ernst Ludwig Kirchner
1933 *Mary Wigman's Dance*



1909 *Dancing Couple*
lithograph on yellow wove paper, sheet: 44.6 x 36.8 cm



Ernst Ludwig Kirchner
1933 *Mary Wigman's Dance*



1914 *Sailor Saying Goodbye*
Ink and crayon on paper, 42.9 x 50.8 cm .



***Self-Portrait with Erna* 1933**
Woodcut 49.9 x 35.2 cm



.Ernst Ludwig Kirchner. (German, 1880-1938
Carved and painted wood, 43.5 cm high .1909-1910 .*Standing Girl, Caryatid*

Emil Nolde German 1867-1956



Emil Nolde



BOOT

Lithograph. 1907.

On chamois thick wove .Emil Nolde Signed in pencil lower right
paper. Size: 335 x 470 mm



SCHIFFE

Woodcut. 1906.

Emil Nolde Signed in pencil lower right and dated
Brilliant, deep black impression, on chamois .06
laid paper. Scarce.
Size: 297 x 202 mm



Nolde, Emil
Wildly Dancing Children 1909
Oil on canvas 73x88 cm Kunsthalle Kiel



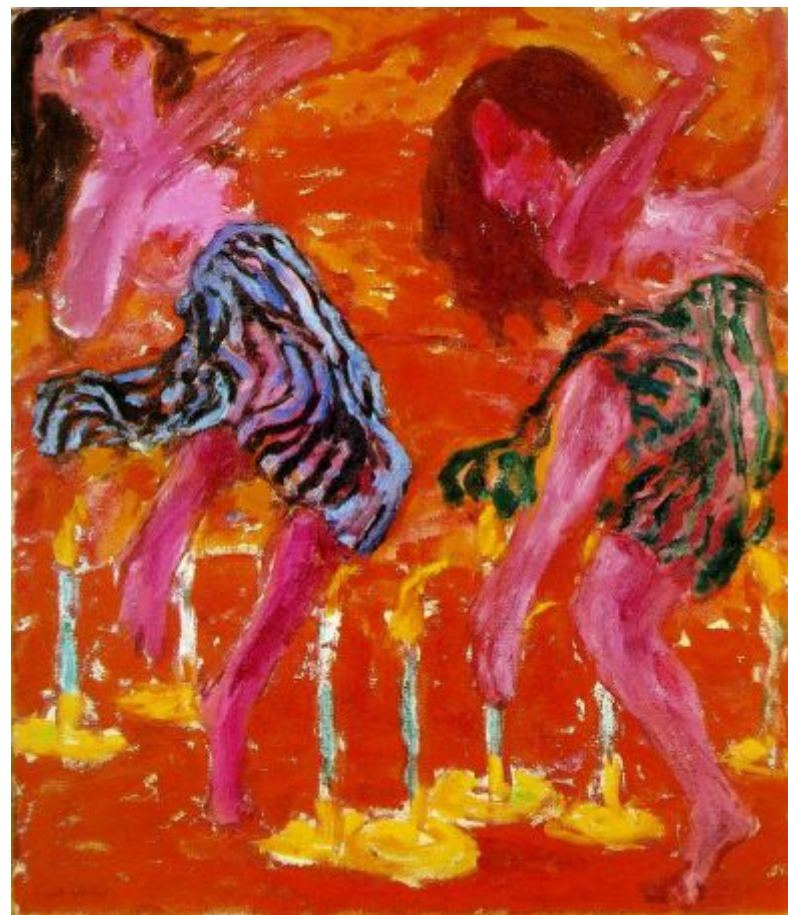
Nolde 1917 *Candle Dancers*
Woodcut 30.5 x 23.5 cm



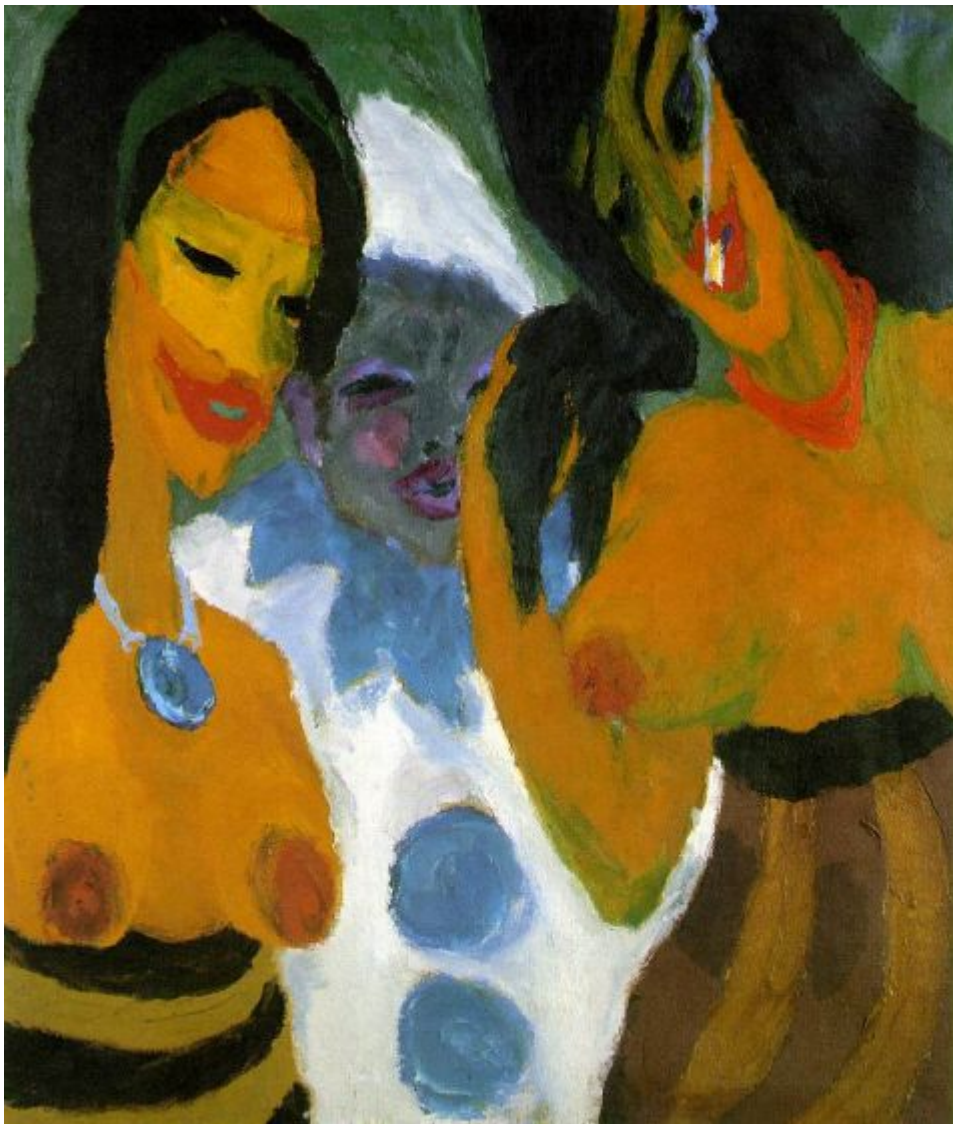
Nolde, Emil
Autumn Sea VII 1910 Oil on canvas 60x70 cm



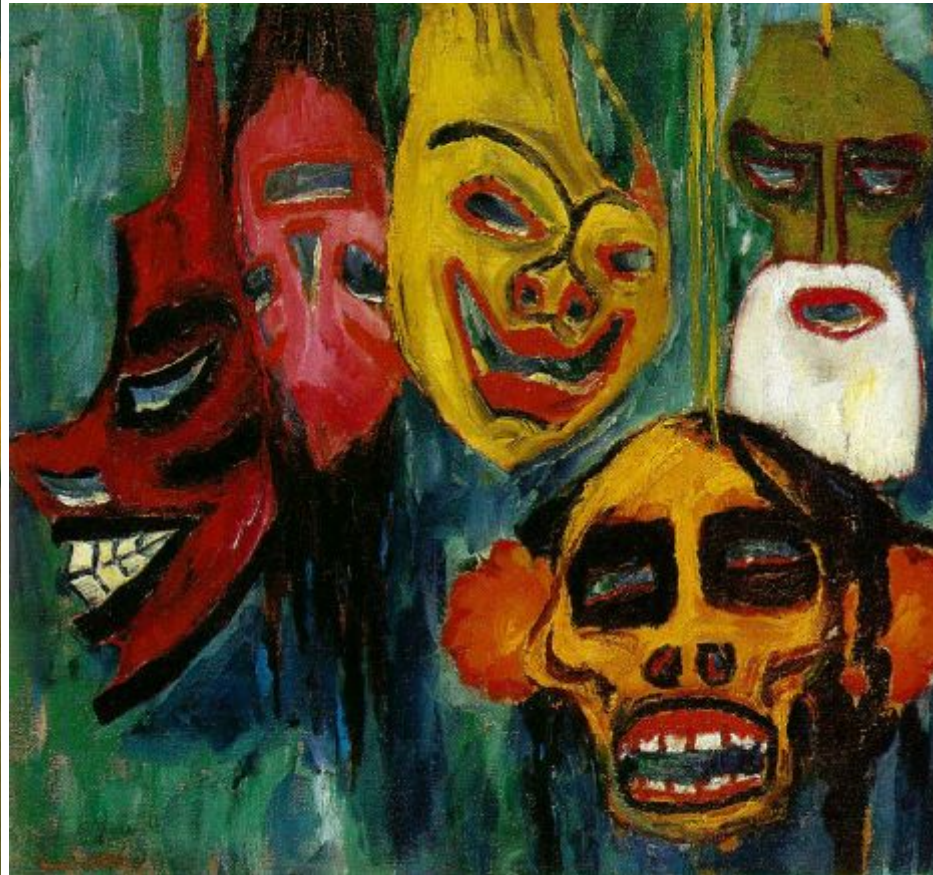
Nolde, Emil
Dance Around the Golden Calf 1910
Oil on canvas 88x105 cm
Staatsgalerie moderner Kunst, Munich



Nolde, Emil
1912 Candle Dancers
Oil on canvas 100x86 cm
Nolde-Stiftung Seebull



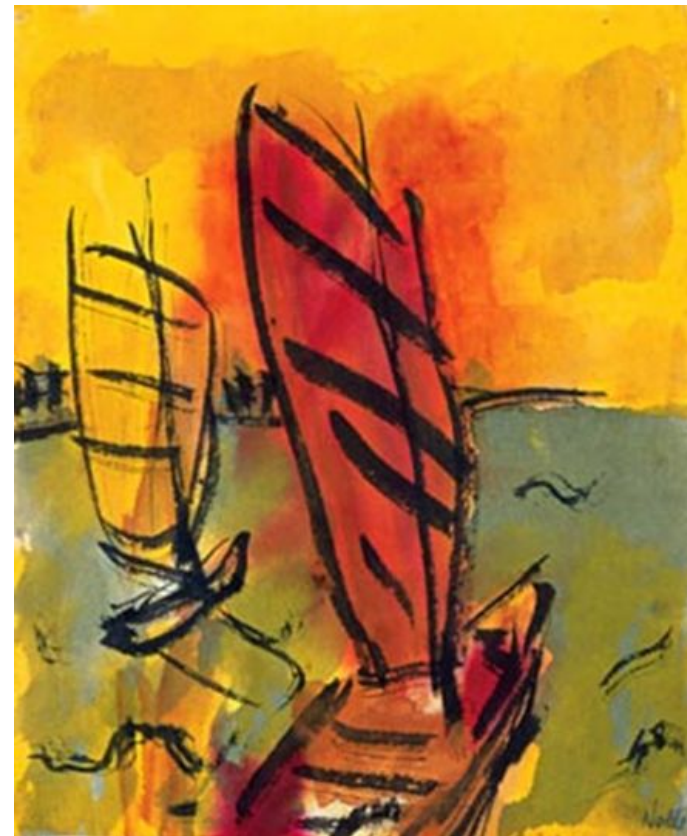
1917 Nolde, Emil Women and a Pierrot
Oil on canvas 100x86 cm
Kunstsammlung Nordrhein-Westfalen,
Dusseldorf



Nolde, Emil Mask Still Life III 1911
Oil on canvas 74x78 cm
Nelson Gallery of Art, Atkins-Museum, Kansas City

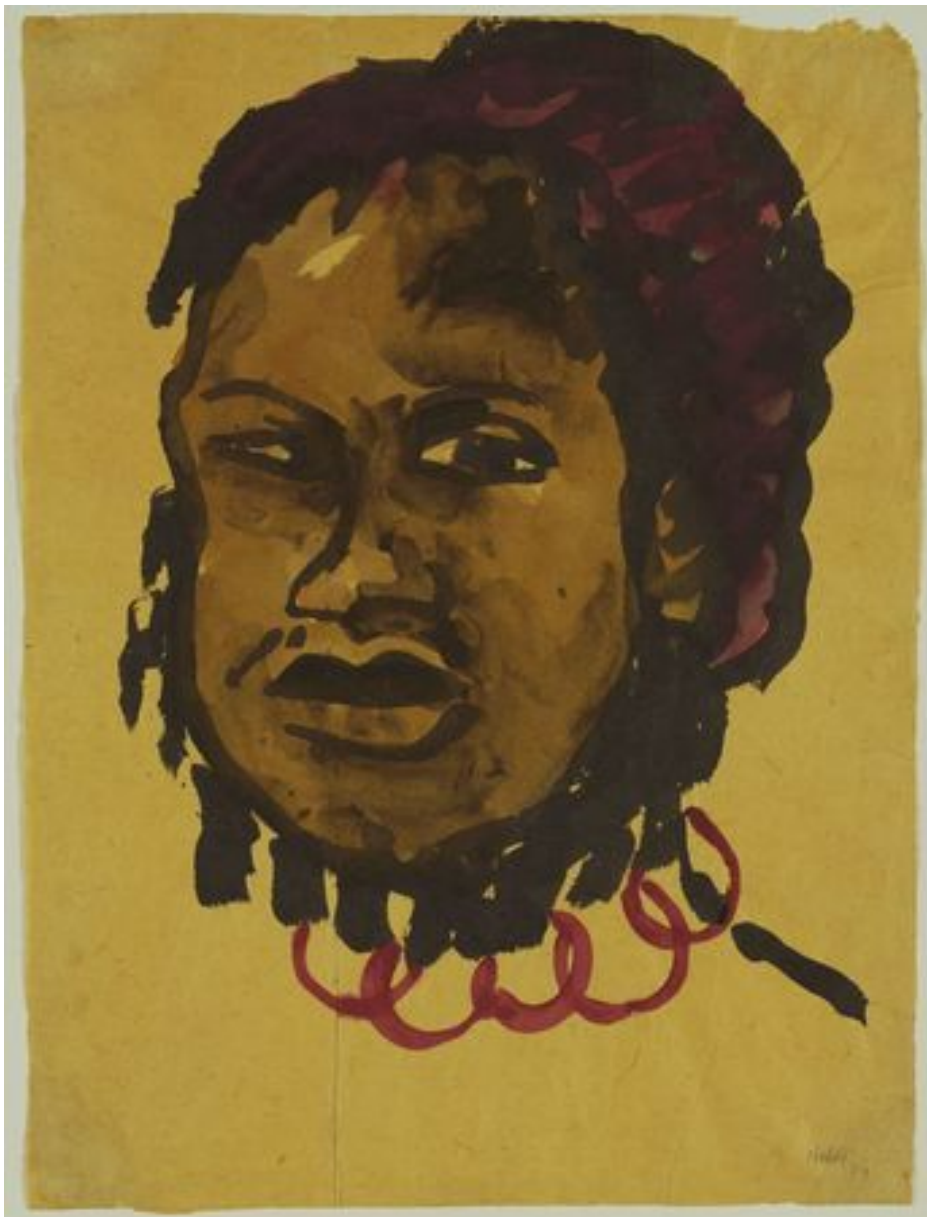


c. 1915? Oil on burlap 66.6 x 84.5 cm .*Blue and Violet Flowers* Emil Nolde. German, 1867-1956



**.1913 Circa .Watercolor Size:228 x 330 mm
GELBES MEER
On thin Japan. .Nolde Signed in pencil lower right
The colors fresh and vibrant.
USA**

**EMIL NOLDE
ZWEI DSCHUNKEN
water color on paper**



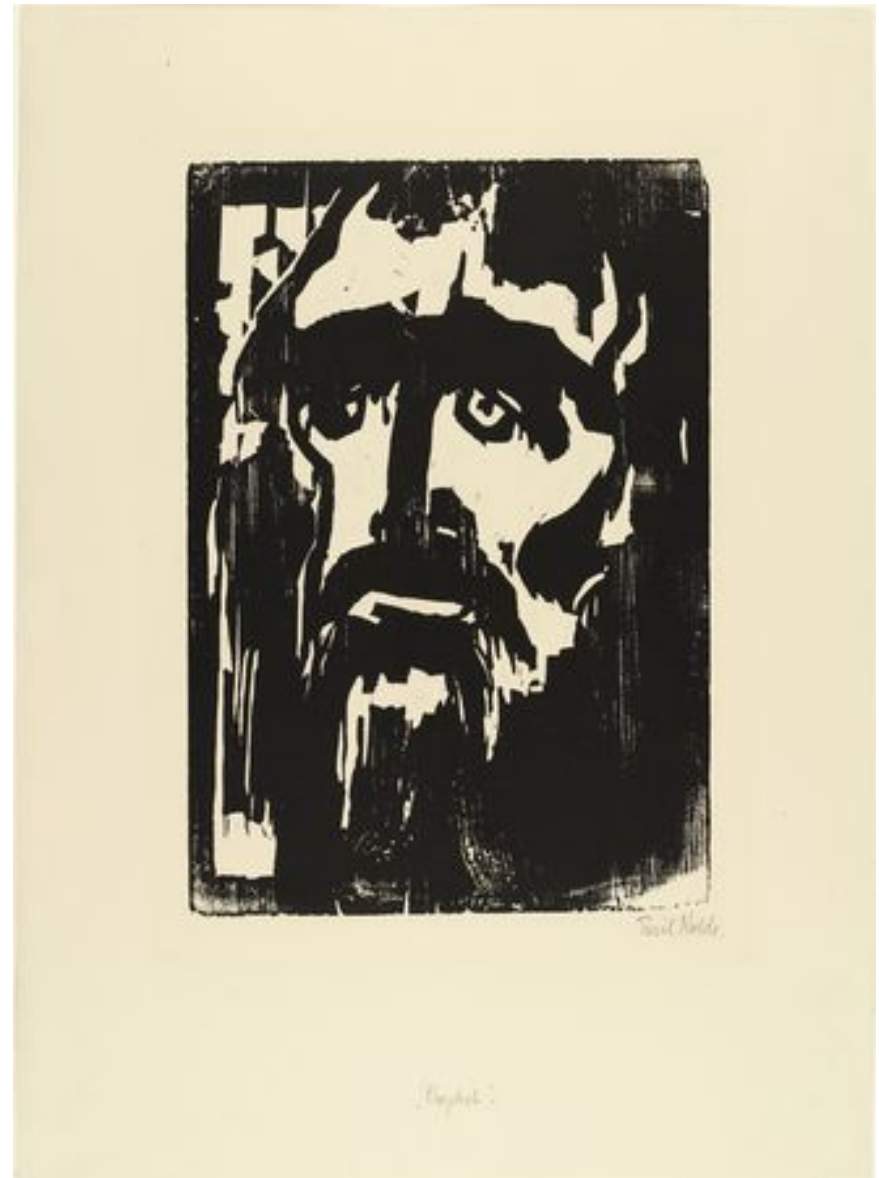
Emil Nolde German 1867-1956
1914 .*Papuan Head*
Watercolor on paper 50.8 x 38.1 cm .



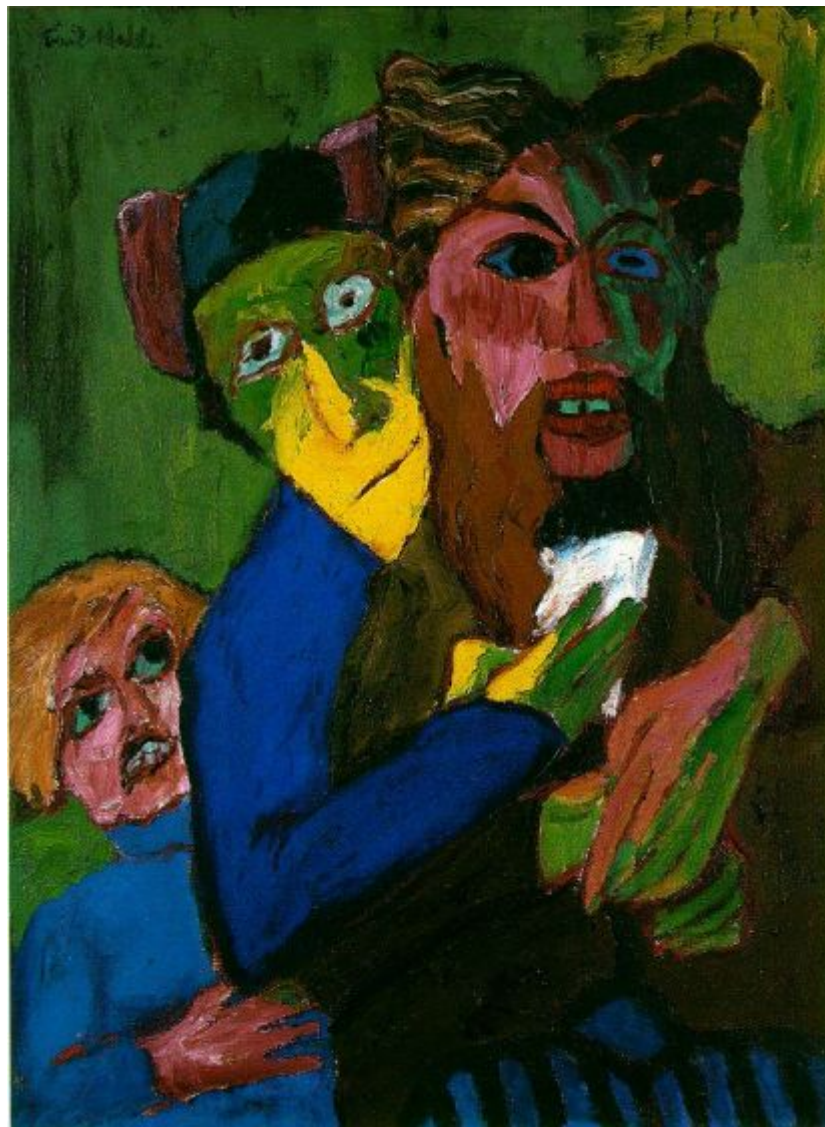
Emil Nolde. German, 1867-1956
1920-21 *Gypsy Girl*
Watercolor on paper, 47 x 34.9 cm



Emil Nolde German, 1867-1956
1912 *Head of a Woman III*
Woodcut, 30 x 22.5 cm



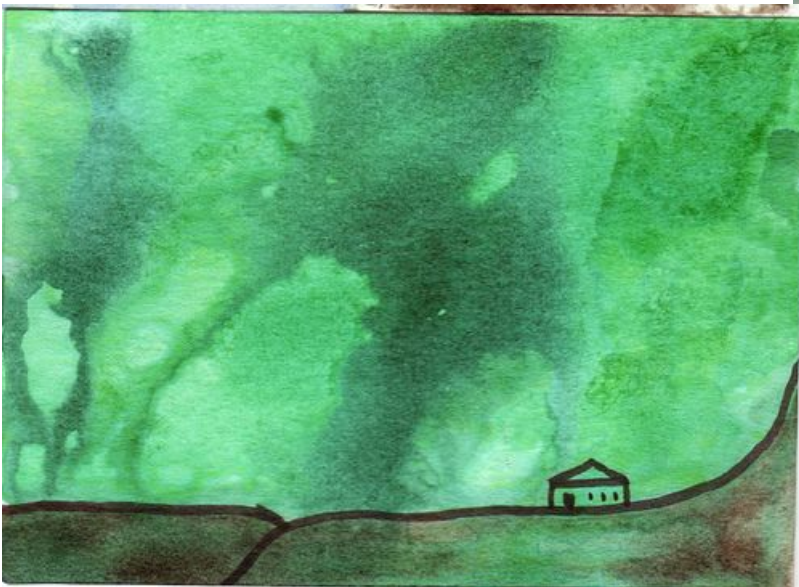
1912 *Prophet* Emil Nolde.
Woodcut, 32.1 x 22.2 cm



1913 Nolde, Emil Excited People
Oil on canvas 102x76cm
Nolde-Stiftung Seebull



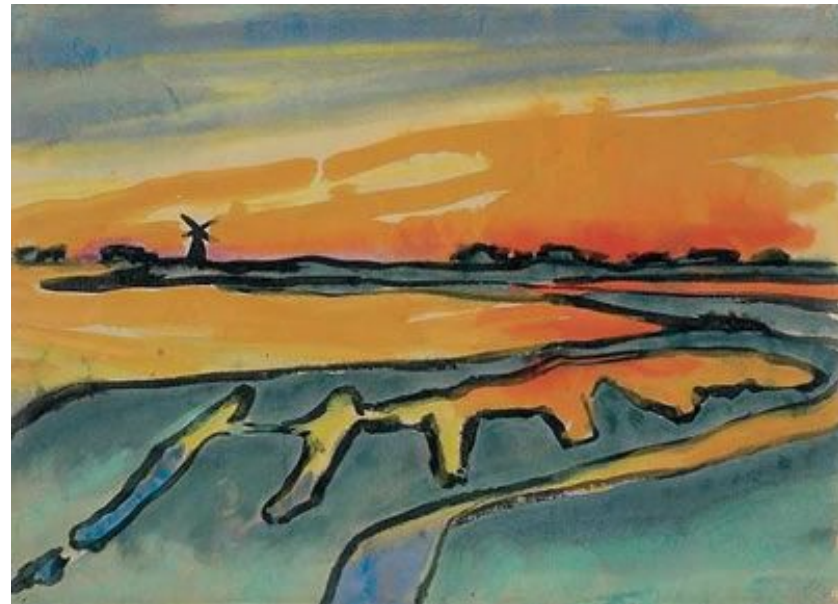
Nolde, Emil Child and Large Bird 1912
Oil on canvas 73x88 cm
Statens Museum for Kunst, Kobenhavn



Romantic Landscape with Fortress 1941-5 •



Emil Nolde, 1867–1956
North Frisian Landscape (c. 1949)
Watercolor on paper 39.8x49 cm



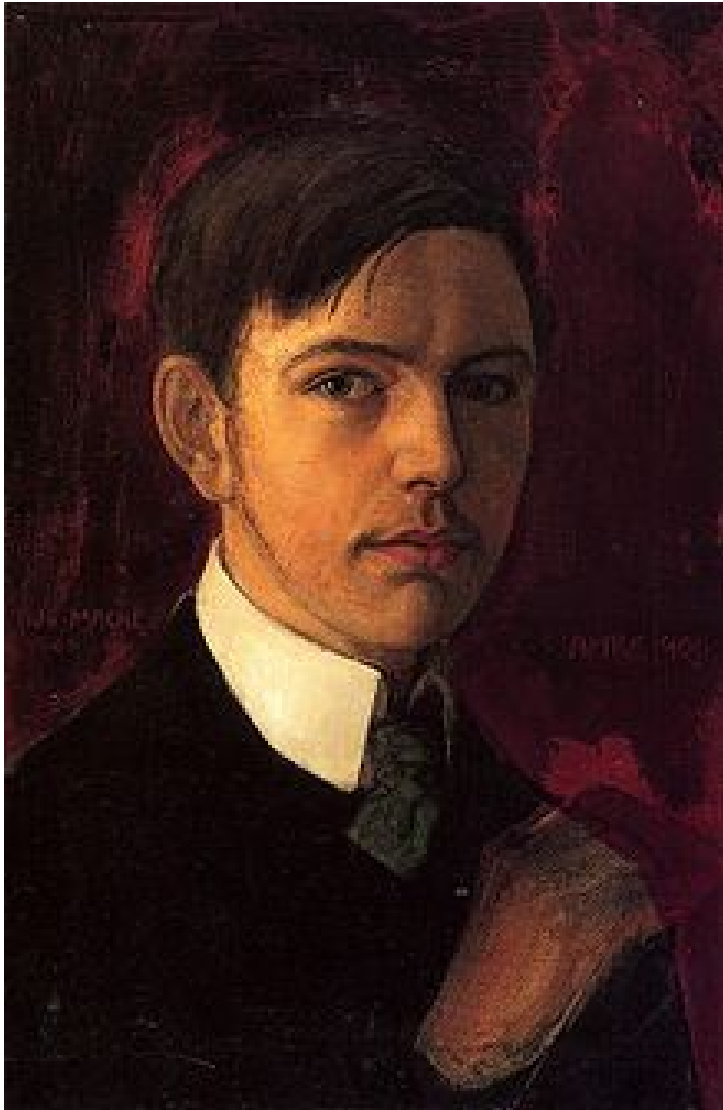
Marshy Landscape Under the Evening Sky
c.1943, 17x23cm



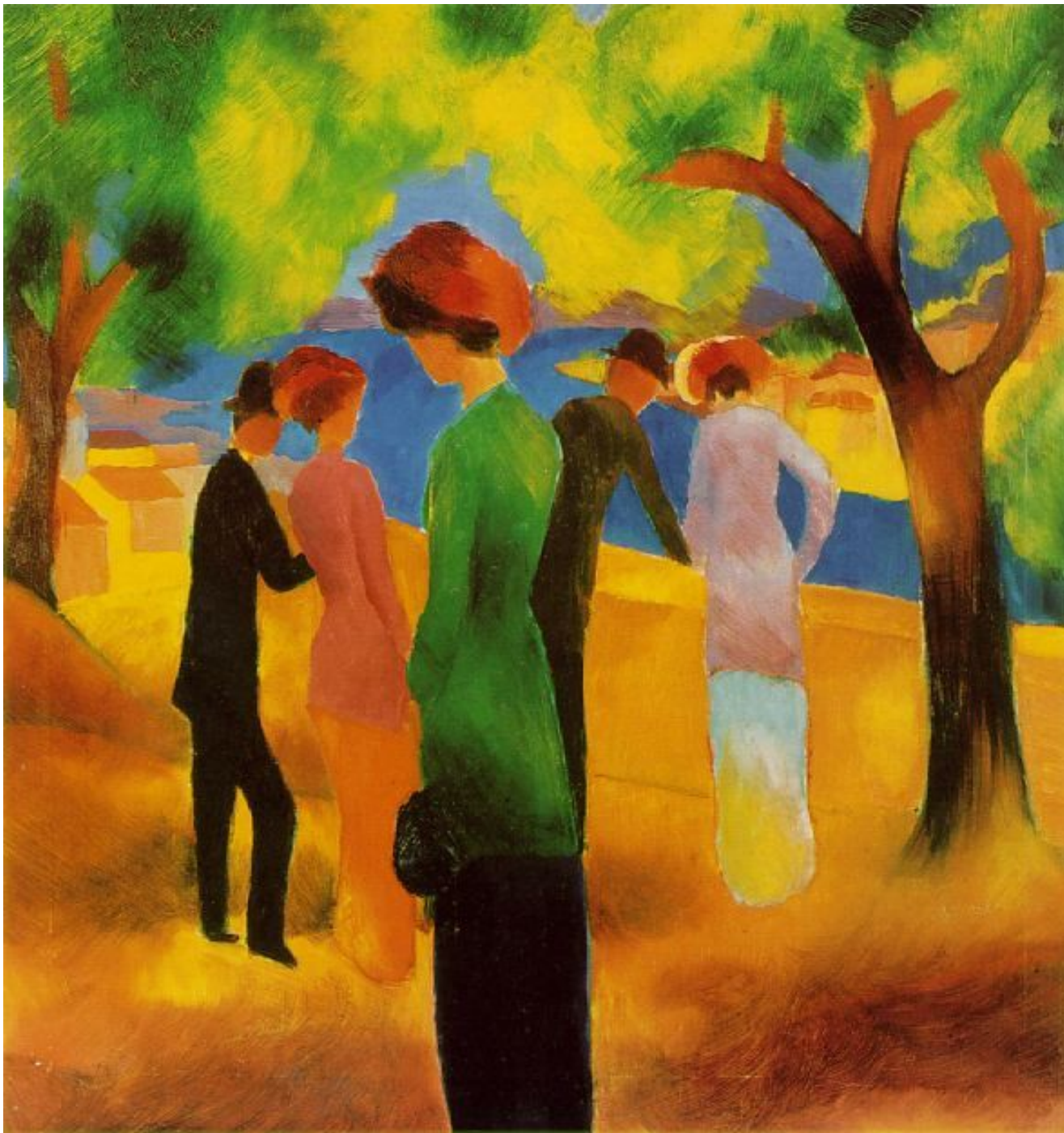
,Emil Nolde ca.1914

Bauernhof in Marschlandschaft (Farmhouse in Marsh) Watercolor, 35.2 x 46.5 cm

August Macke 1887 –1914



August Macke, *Self-portrait*, 1906, oil on canvas



Macke, August
Lady in a Green
Jacket
1913
Oil on canvas
44x43 cm
Museum Ludwig,
Cologne



1914 Macke, August Man Reading in the Park Oil on canvas 86X100 cm Museum Ludwig, Cologne



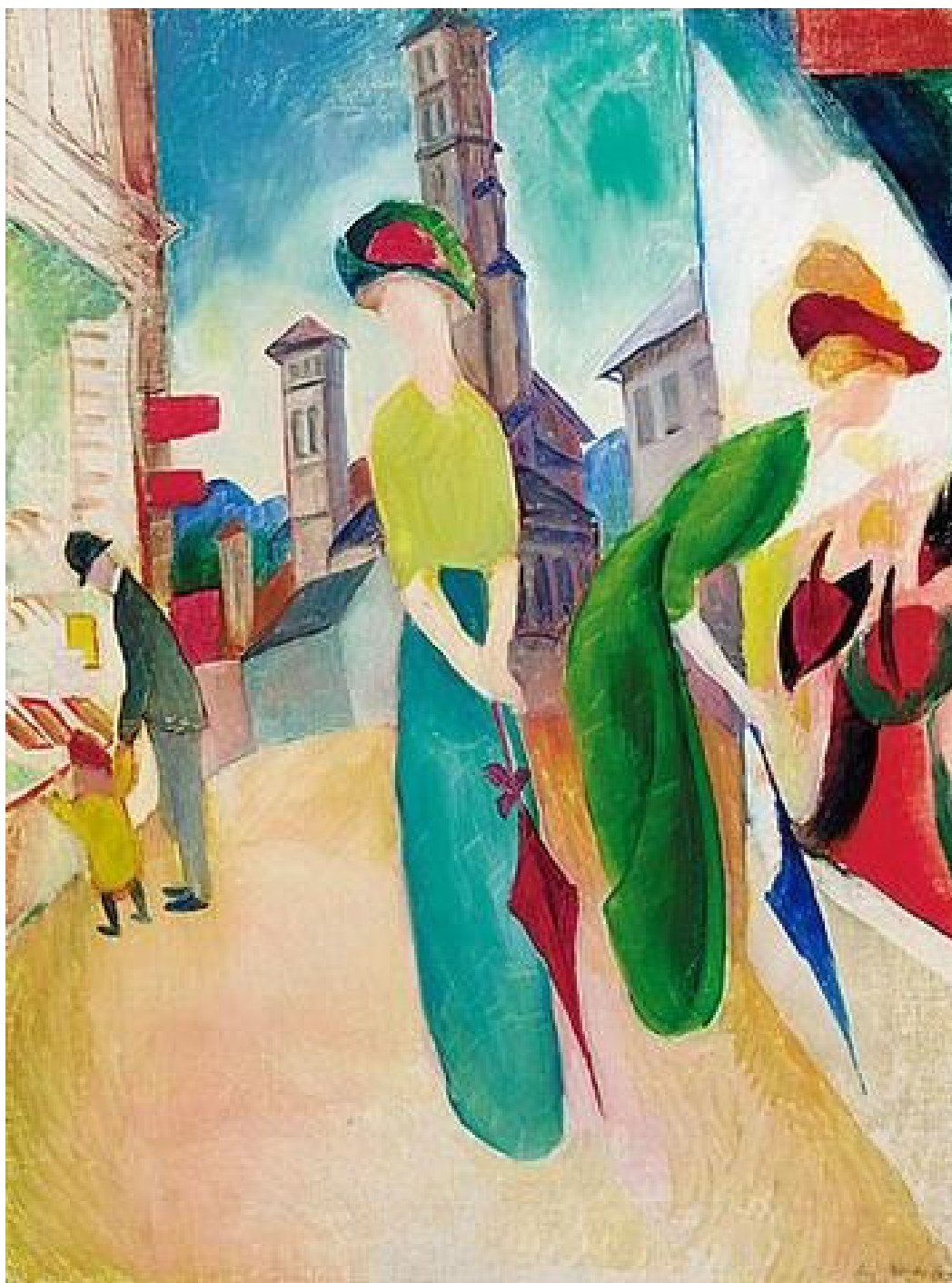
Rokoko, 1912, oil on canvas, 89 x 89 cm, National Museum of Art, Architecture and Design, Norway



Macke -Vegetable fields, oil on canvas 47.5 x 64 cm 1911, Museum Ludwig, Cologne, Germany



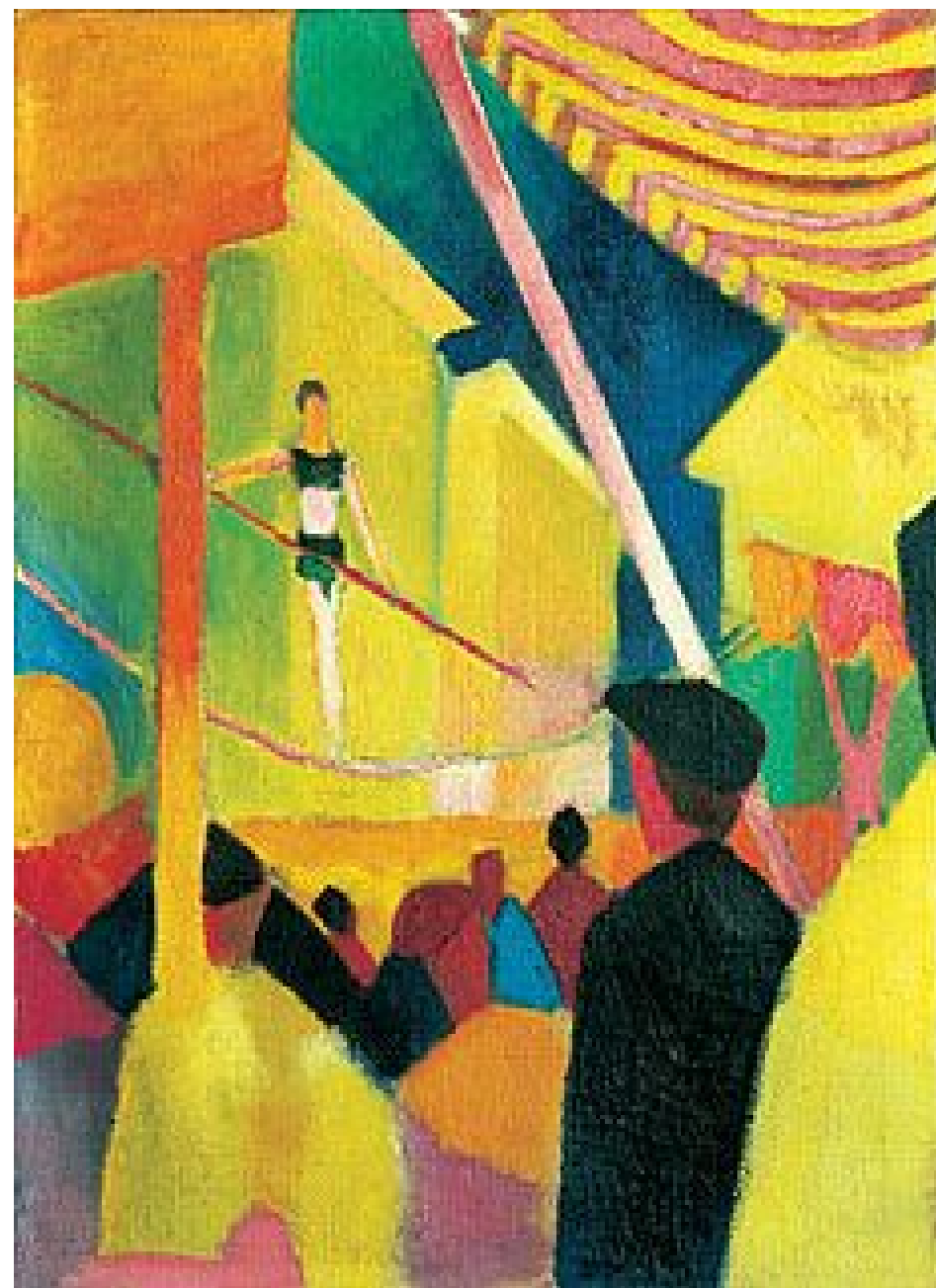
August Macke
Market in Algiers 1914
50.0x39.0 cm
Watercolor



August Macke
two women 1913 '
Oil on Canvas 56 x 42 cm.



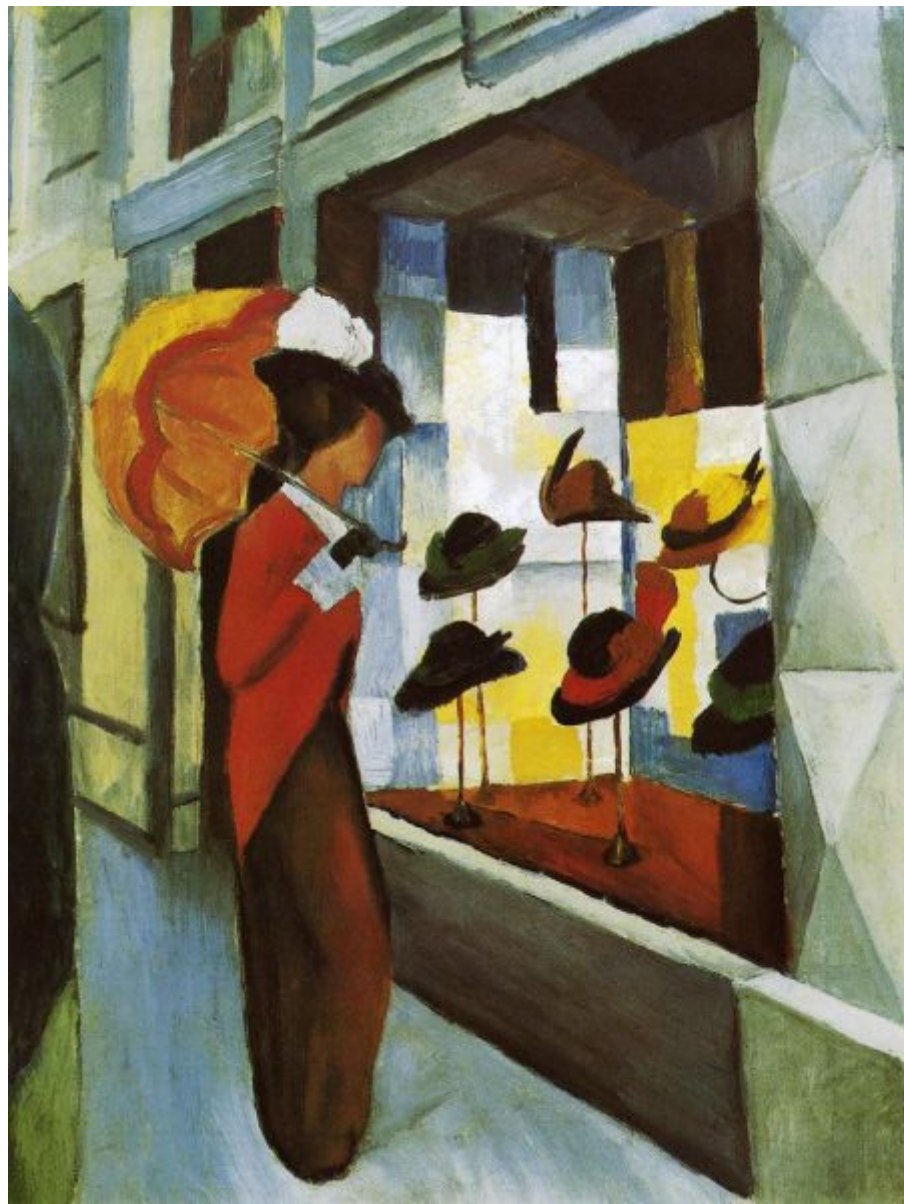
August Macke Tightrope walker 1914 80x60 cm



August Macke rope dancer 1913
oil on canvas, 46 x 35 cm, private collection



August Macke Hat Shop Oil on canvas 44 x 54 cm
Städtische Galerie im Lenbachhaus, München



Hat Shop 1914 60,5 x 50,5 cm •
August Macke 1887-1914



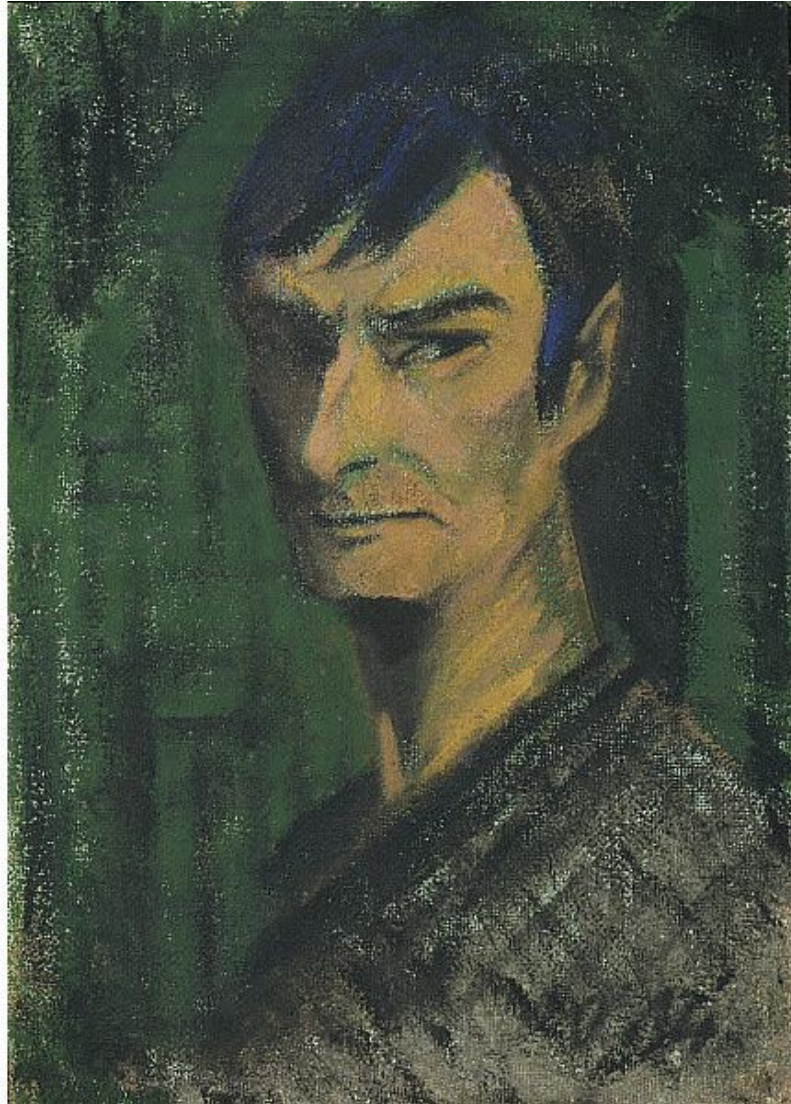
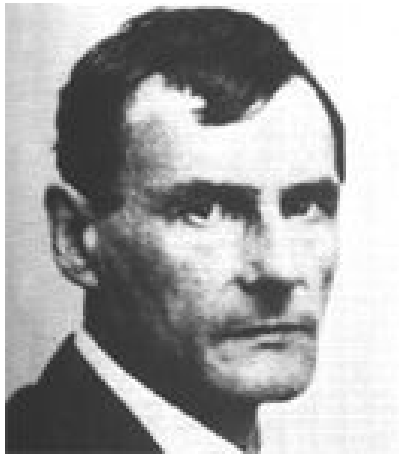
August Macke 1913 oil on cardboard 51x57 cm

Style: Orphism



August Macke 1912
Couple in the woods
100 x 100 cm

Style: Orphism



Otto Müller 1874 –1930

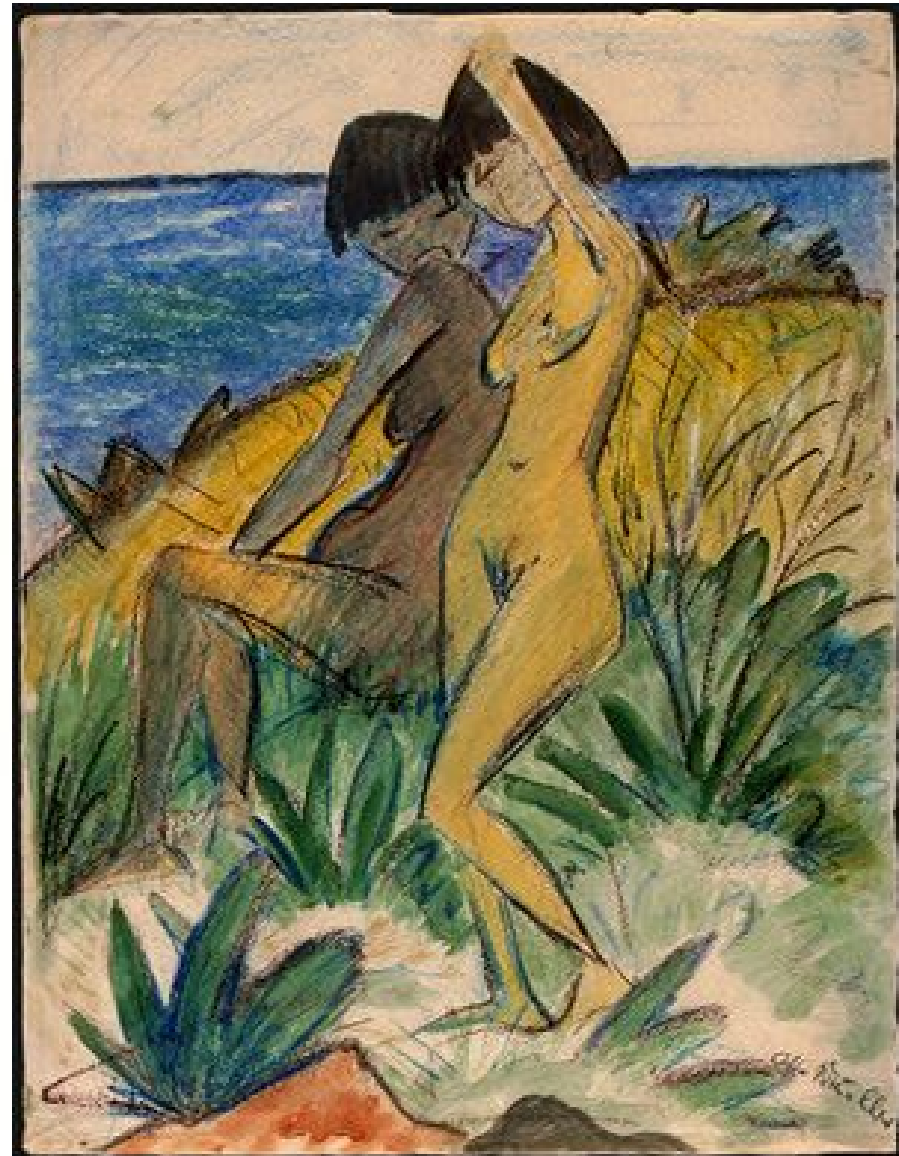
Otto Muller Self-Portrait 1921 66x47.9 cm Tempera on canvas



Otto Müller Three girls in a wood 1920 oil on panel 121.9x134.8 cm



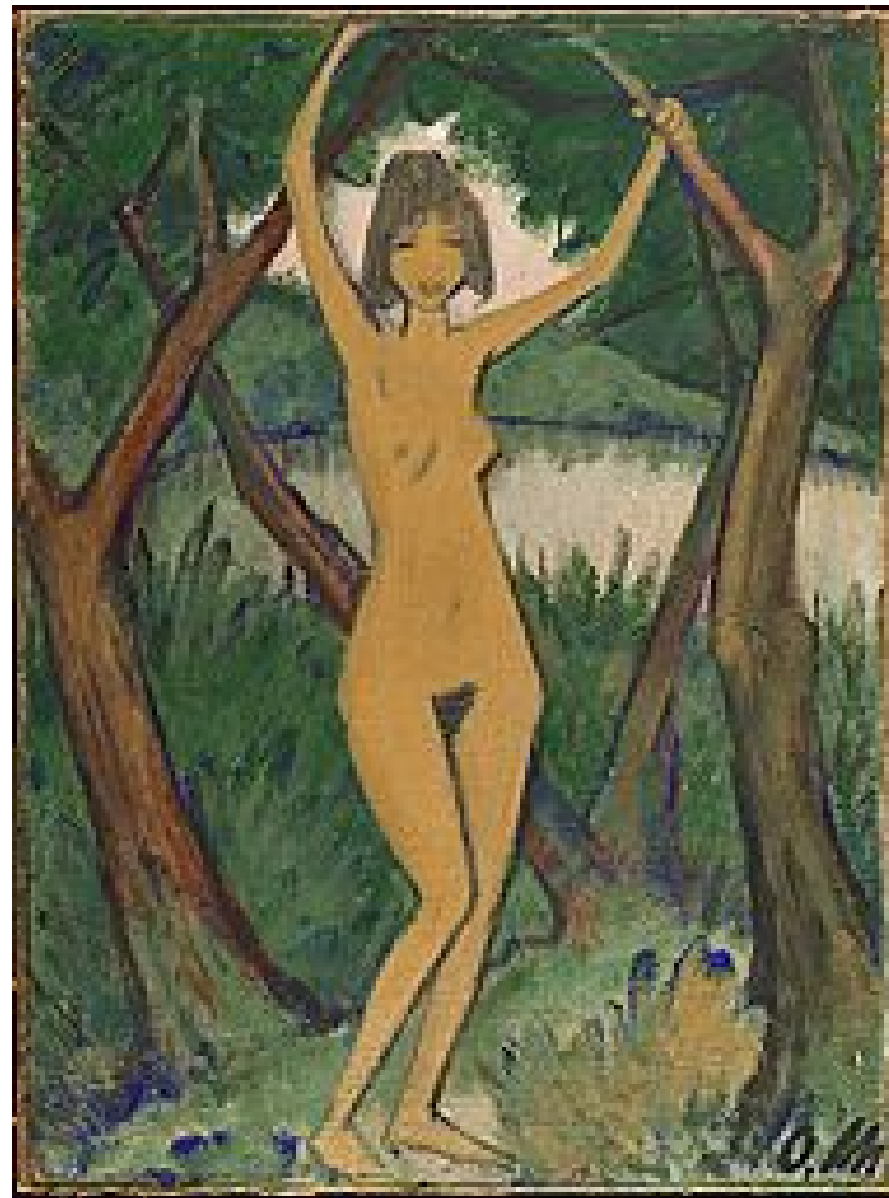
Otto Mueller •
1922 - 1920 ,*Adam and Eve*
Lithograph 55.9 x 44.4 cm



Otto Mueller German, 1874 - 1930
c. 1920 ,*Two Bathers*
color crayons and watercolor, 68.7 x 52.8 cm



Otto Mueller German, 1874–1930
c. 1919 *Bathers*
Oil on burlap 70.2 x 90.8 cm
The Museum of Modern Art, New York



c. 1925 *Nude in a Landscape*
Painting 120.2x89.2 cm
Distemper on burlap
Harvard University Art Museums



Otto Müller

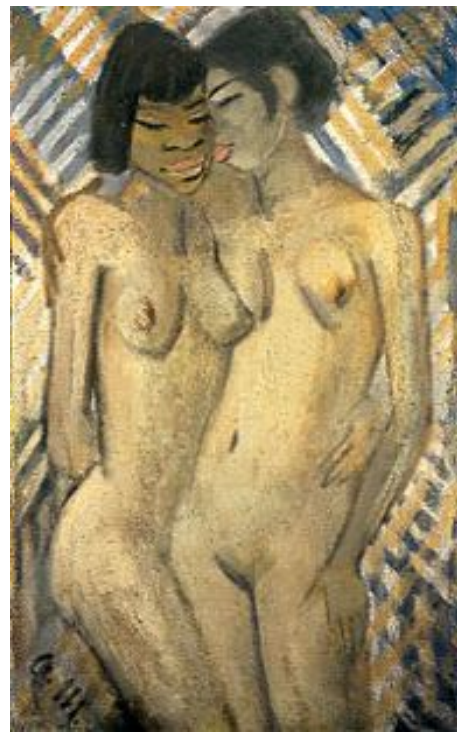


Liebespaar, 1919 Otto Müller (lovers)



Kunsthalle zu Kiel

Two Negro girls
1928
oil on panel
120x75cm



MUELLER, c.1922 *Two Female Nudes in a Landscape*
100 x138 cm Oil on burlap



Nudes in Dunes 1919-20
130 x 100 cm