



**Claude Monet**  
**1840-1926**



**Claude Monet (1840-1926)**

***Déjeuner sur l'herbe***

***(The Picnic).***

**Left fragment.**

**1865-1866.**

**Oil on canvas. Musée d'Orsay, Paris,  
France.**



Claude Monet (1840-1926) *The Picnic* 1865-1866. Oil on canvas. The Pushkin Museum of Fine Arts, Moscow, Russia



Claude Monet (1840-1926) Bathing at La Grenouillere 1869 Oil on white primed canvas (73 x 92 cm.)



**Pierre-Auguste Renoir**  
**Bathing at 'La Grenouillère'", 1869"**  
oil on canvas, 66x81 cm Stockholm, Nationalmuseum



**Claude Monet 1840-1926**  
**Bathing at La Grenouillere 1869**  
Oil on white primed canvas (73 x 92 cm.)



Claude Monet (1840-1926) *The Beach at Trouville* 1870 Oil on canvas 38 x 46 cm National Gallery, London



**Claude Monet (1840-1926)**  
**The Beach at Trouville 1870**  
Oil on canvas 38 x 46 cm National Gallery, London

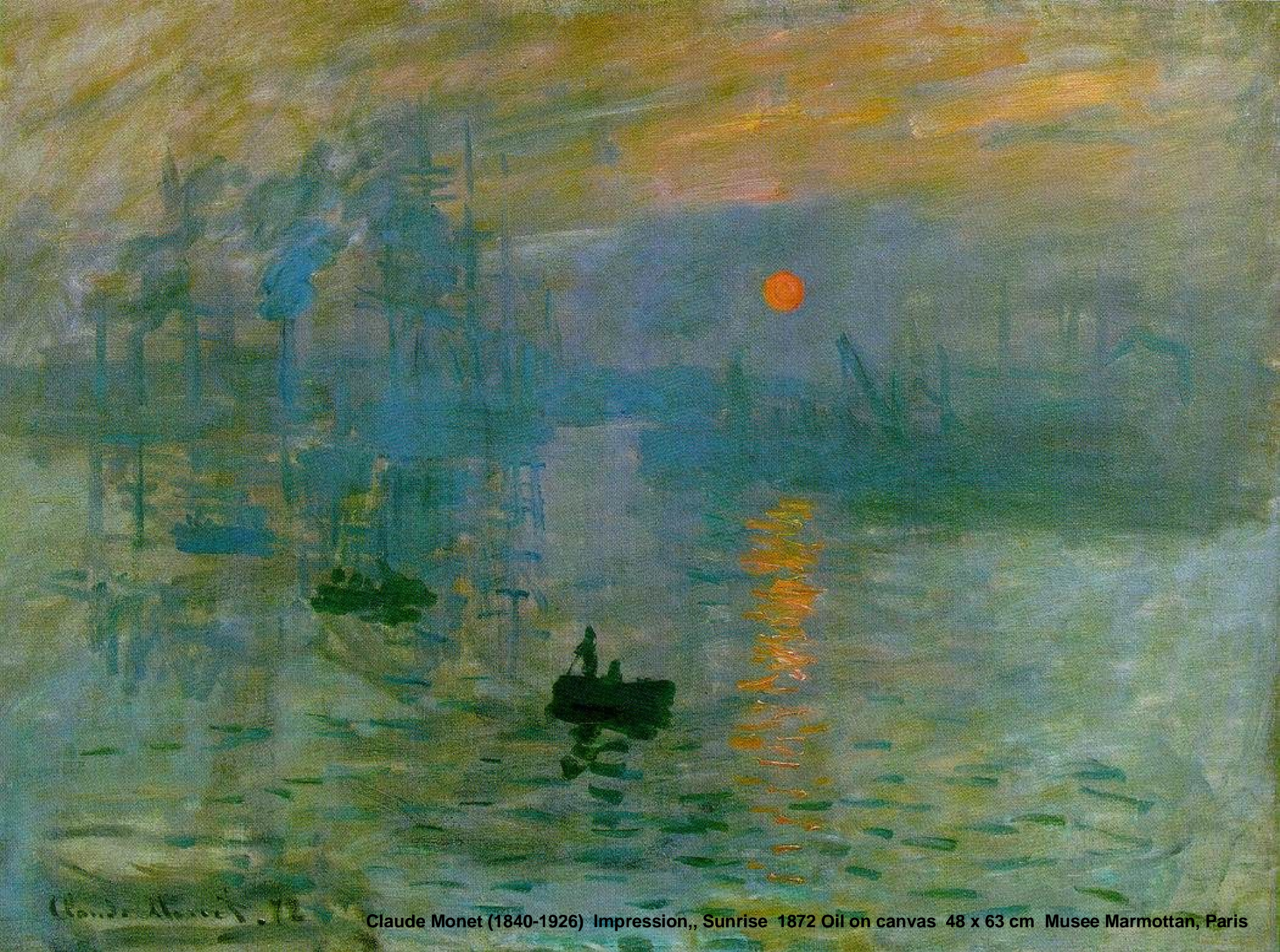


**Edouard Manet (1832-1883)**  
***At the Beach*. 1873. Oil on canvas.**  
Musée d'Orsay, Paris

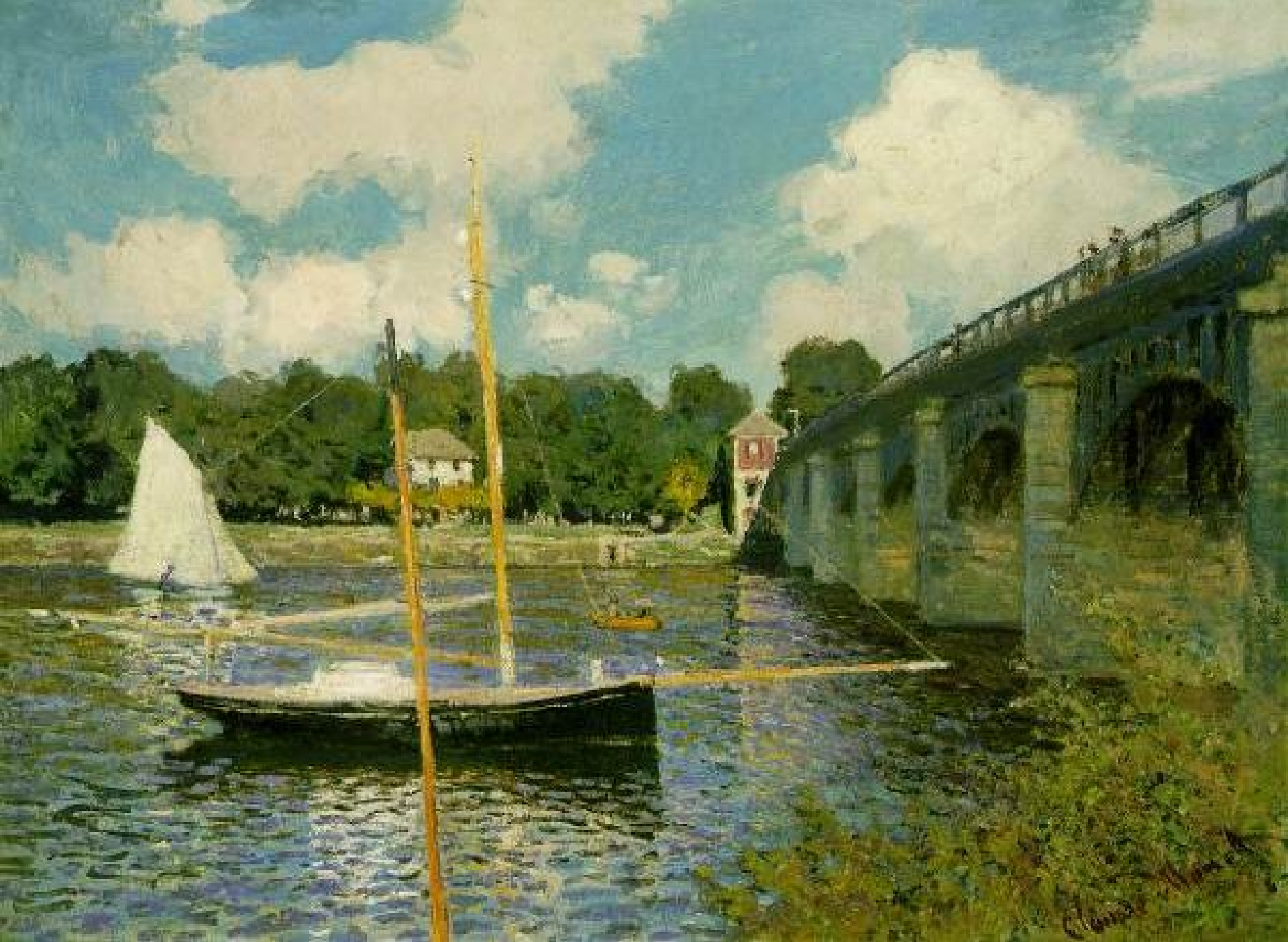


Claude Monet (1840-1926) The Thames at Westminster 1871 Oil on canvas 47 x 72.5 cm National Gallery, London





Claude Monet (1840-1926) Impression,, Sunrise 1872 Oil on canvas 48 x 63 cm Musee Marmottan, Paris



Claude Monet (1840-1926) The Highway Bridge at Argenteuil 1874 Oil on canvas 60 x 79.7 cm National Gallery of Art, Washington



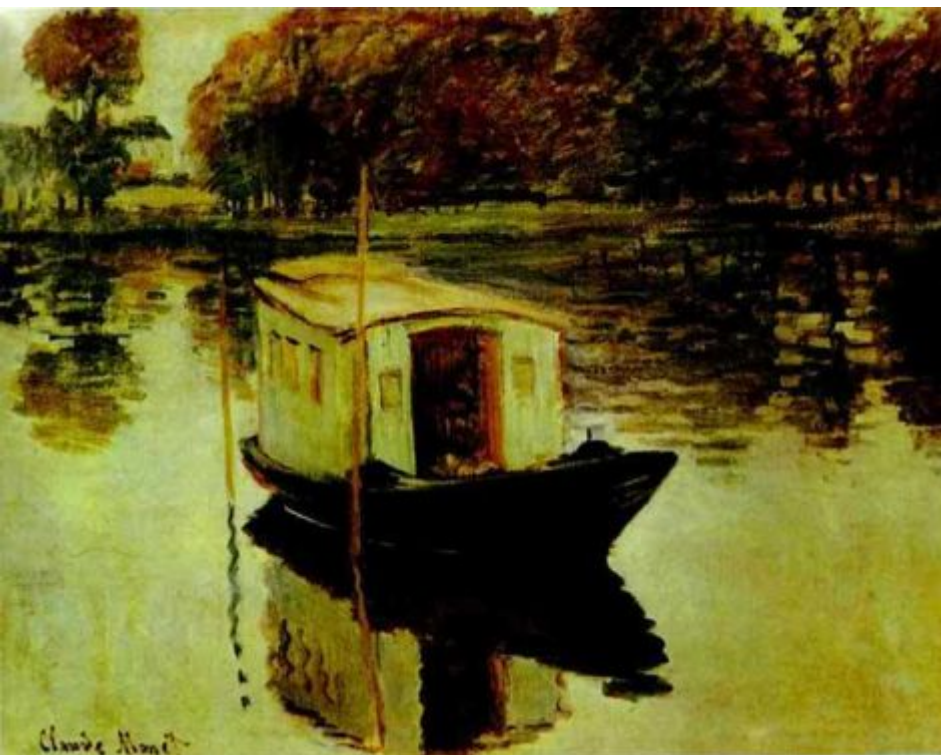
**Claude Monet (1840-1926)**  
**Camille Monet and Her Son Jean**  
**(Woman with a Parasol) 1875**  
**Oil on canvas 100 x 81 cm**  
**National Gallery of Art, Washington**



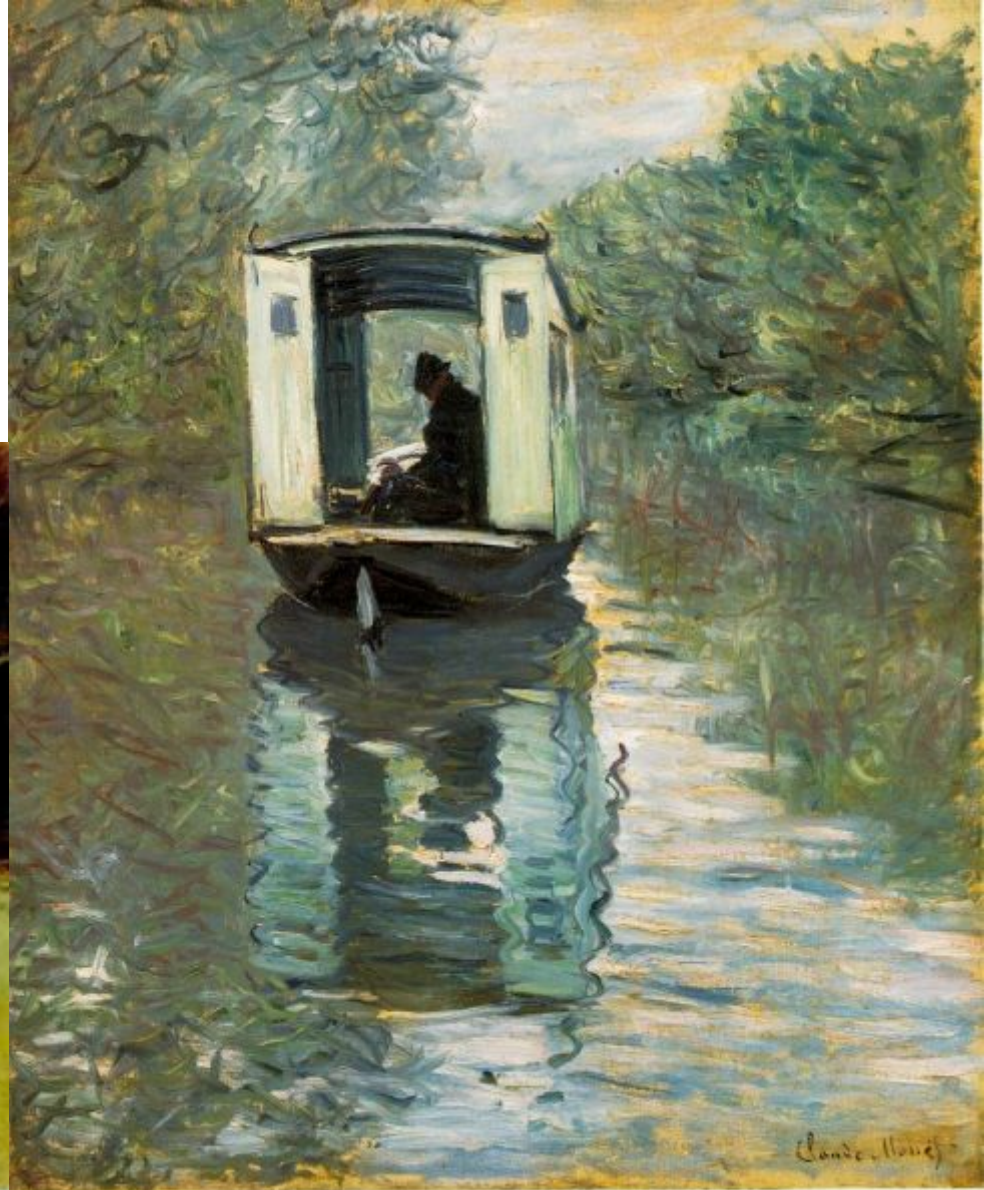
**Study of a Figure Outdoors (Facing Right)**  
Claude Monet 1886, oil on canvas 131 x 88 cm,  
Musée d Orsay, Paris France.  
.Woman with a parasol, Woman with an umbrella



**Study of a Figure Outdoors (Facing Left)",**  
Claude Monet 1886, oil on canvas 131 x 88 cm,  
Musée d Orsay, Paris France. Woman with a  
.parasol, Woman with an umbrella



.1874 .*The Studio Boat*  
.Oil on canvas. Rijksmuseum Kröller-Müller, Otterlo



Oil on canvas, 72 x 59.8 cm The Barnes 1876*The Boat Studio*  
Foundation, Merion, Pennsylvania



**:Edouard Manet**  
**Monet in seinem**  
**Atelierboot 1874**  
**oil on canvas**  
**82.5 x 100.5 cm**



Claude Monet 1840-1926 *The Saint-Lazare Station* 1877, Oil on canvas  
75 x 104 cm Gustave Caillebotte bequest, 1894 Paris, musée d'Orsay



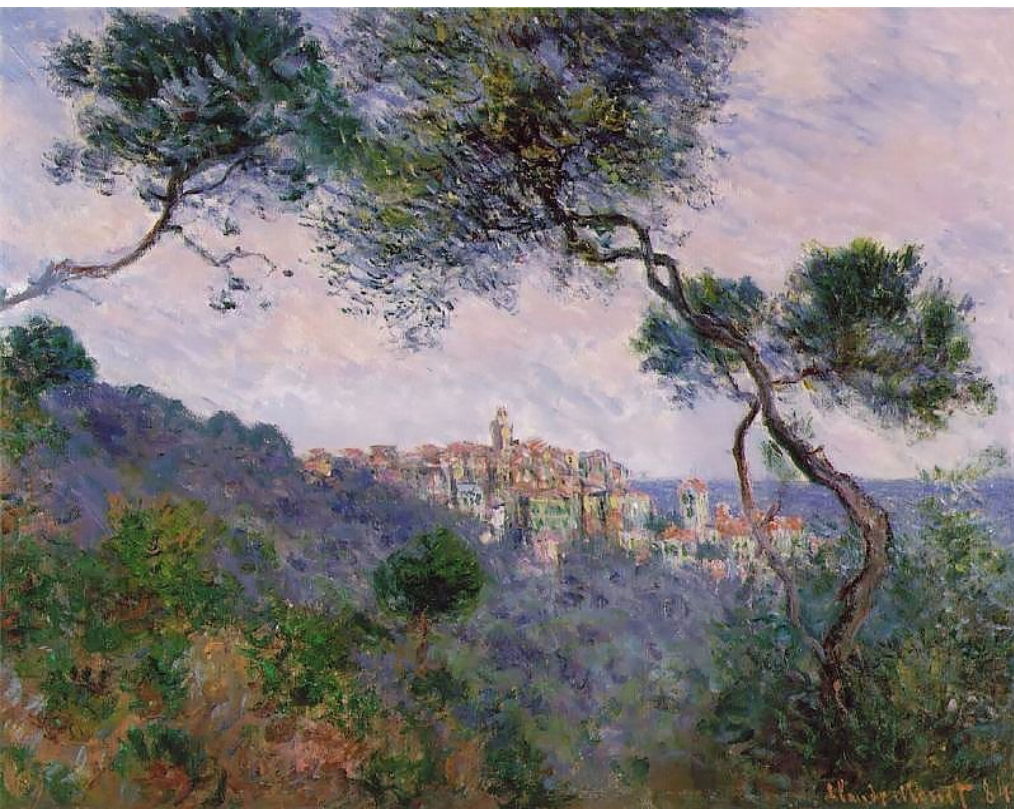
**Claude  
Monet  
(1840-  
1926)**

**Bordighera,  
Italy  
1884  
Oil on  
canvas  
60 x 73  
cm  
Private  
collection**



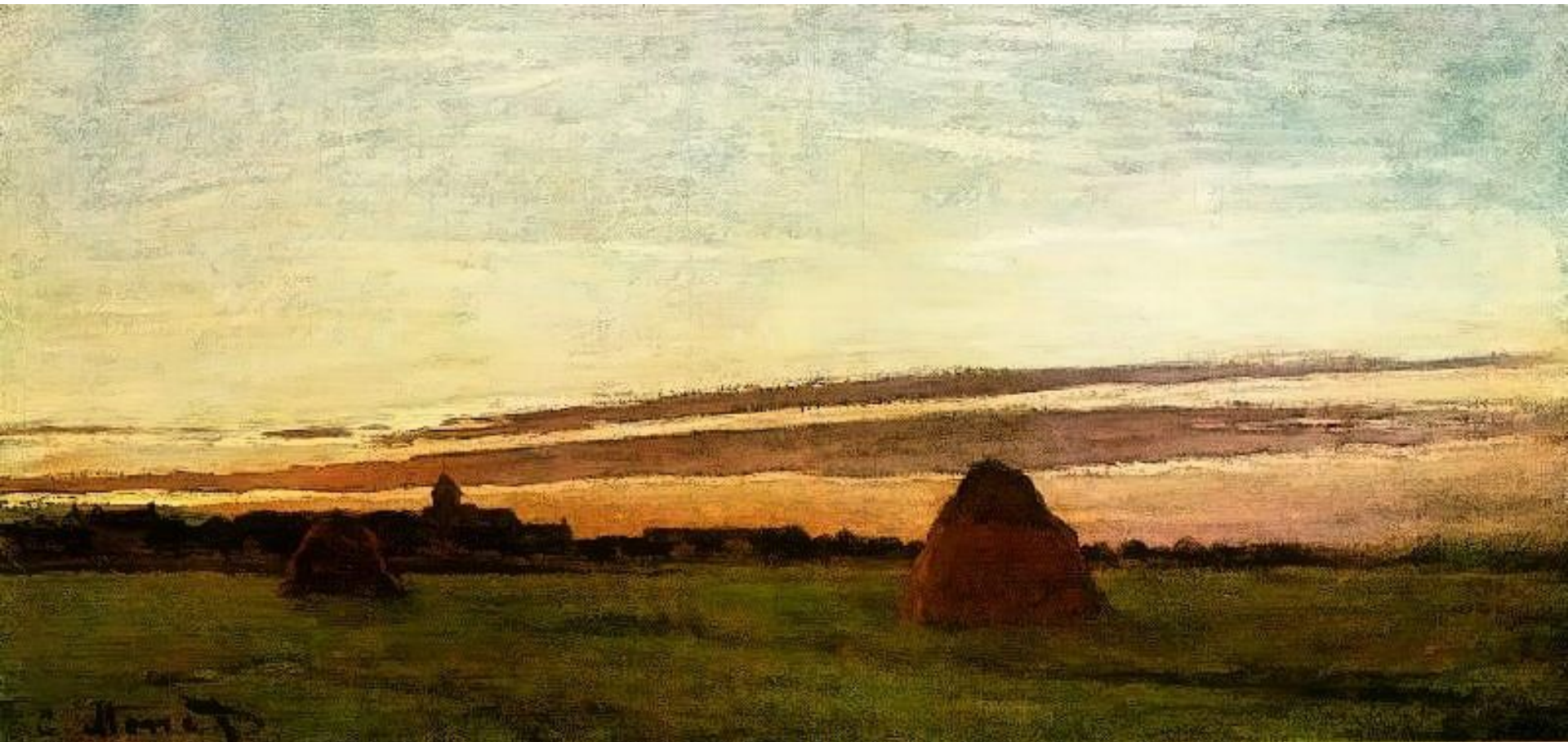


**Claude Monet  
(1840-1926)  
Bordighera,  
Italy 1884 (detail)  
Oil on canvas  
(60 x 73 cm)  
Private collection**



**Claude Monet (1840-1926) Bordighera, Italy 1884**  
Oil on canvas (60 x 73 cm) Private collection

**detail**



**Haystacks at Chailly at Sunrise 1865. Oil on canvas 30 x 60 cm San Diego Museum of Art**



**Claude Monet**  
(1840-1926)  
*Haystack at*  
*Giverny.*  
1884-1889.  
Oil on canvas.  
The Pushkin  
Museum of  
Fine Arts,  
Moscow,  
Russia



Claude Monet (1840-1926) *Haystack at Giverny*. 1886. Oil on canvas. The Hermitage, St. Petersburg, Russia



**Claude Monet (1840-1926) Wheatstacks (End of Summer) 1890-91 Oil on canvas 60 x 100 cm The Art Institute of Chicago**



*Haystacks on a Foggy Morning*, 1891. Oil on canvas. Private collection

*Wheatstack (Sun in the Mist)*, 1891.  
Oil on canvas. Minneapolis Institute of Arts.



Claude Monet (1840-1926) *Haystack, Snow Effects, Morning*. 1890. Oil on canvas. Museum of Fine Arts, Boston, MA, USA



Claude Monet (1840-1926) *Haystack. End of the Summer. Morning.* 1891.  
Oil on canvas. 60.5 x 100.8 cm Louvre, Paris, France



*Grainstacks. (Snow effects; sunlight),* 1890-91. Oil on canvas.  
National Gallery of Scotland, Edinburgh, Scotland.

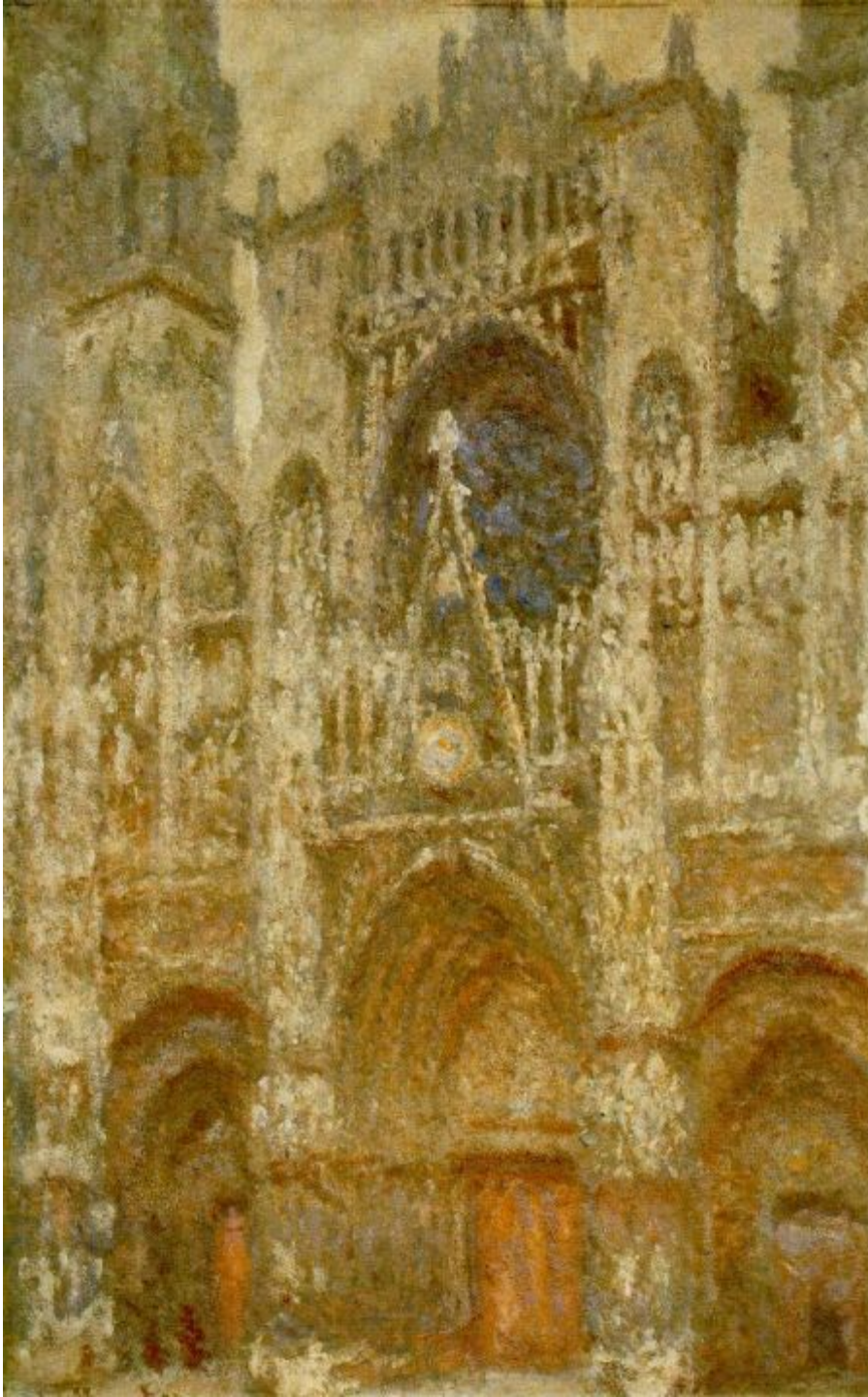


*Wheatstacks, Snow Effect, Morning,* 1891.  
Oil on canvas. J. Paul Getty Museum

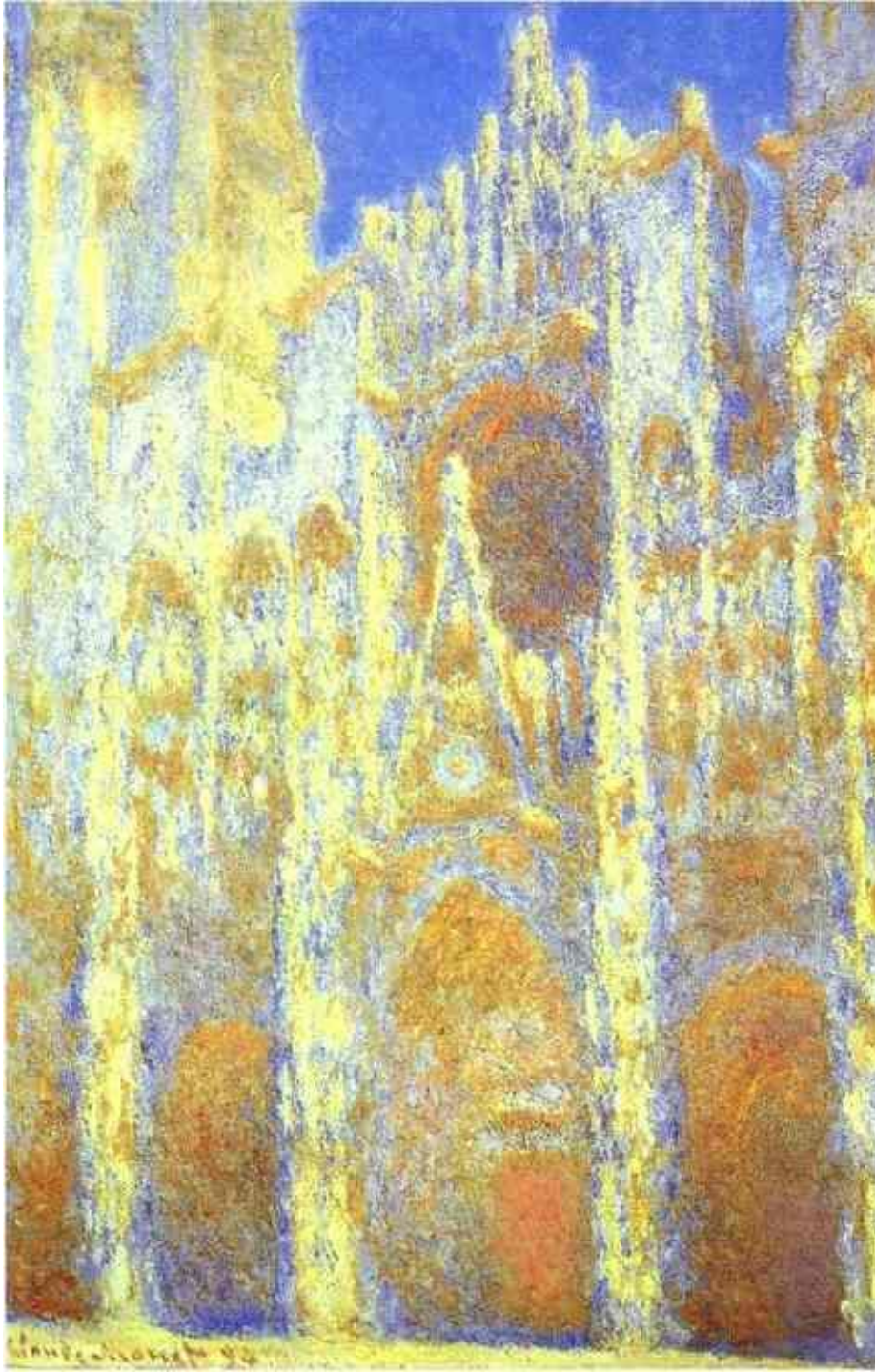


Claude Monet (1840-1926)  
*Haystack. End of the Summer. Morning.* 1890-4  
Oil on canvas. Louvre, Paris, France





**Claude Monet (1840-1926)**  
**La cathedrale de Rouen, le portail,**  
**temps gris (Rouen Cathedral, the**  
**West Portal, Dull Weather)**  
**dated 1894, painted 1892**  
**Oil on canvas**  
**(100 x 65 cm)**  
**Musee d'Orsay, Paris**



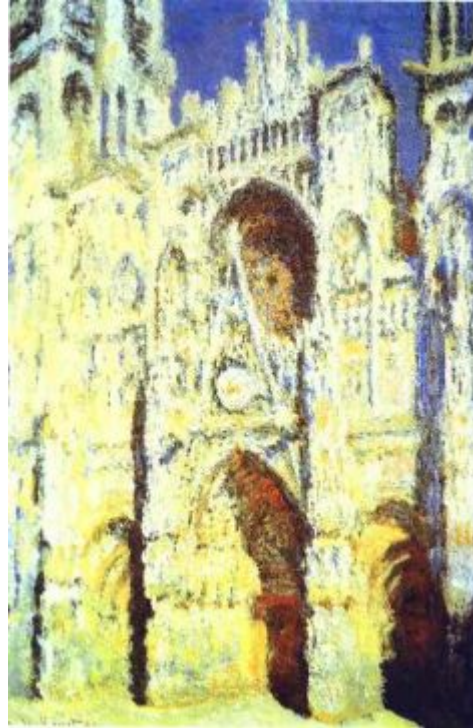
**Claude Monet (1840-1926)**  
***The Rouen Cathedral at Twilight.***  
**1894.**  
**Oil on canvas.**  
**Museum of Fine Arts, Boston, MA, USA**



Claude Monet  
(1840-1926)  
*The Rouen Cathedral*. 1893-1894.  
Oil on canvas.  
Louvre, Paris, France



**Claude Monet 1840-1926**  
**La cathédrale de Rouen, le portail, temps gris Rouen**  
**Cathedral, the West Portal, Dull Weather**  
**1892-1894**





**Claude Monet (1840-1926)**  
**Houses of Parliament, London,**  
**Sun Breaking Through the Fog**  
**1904**  
**Oil on canvas 81 x 92 cm**  
**Musee d'Orsay, Paris**



**Claude Monet (1840-1926)**  
**Houses of Parliament, London**  
**1905**  
**Oil on canvas 81 x 92 cm**  
**Musee Marmottan, Paris**



Claude Monet (1840-1926) Water Lilies (The Clouds) 1903 Oil on canvas 74.6 x 105.3 cm Private collection



**Claude Monet**  
(1840-1926)  
*Water-Lilies.*  
c.1917.  
Oil on canvas.  
Musée Marmottan, Paris,  
France



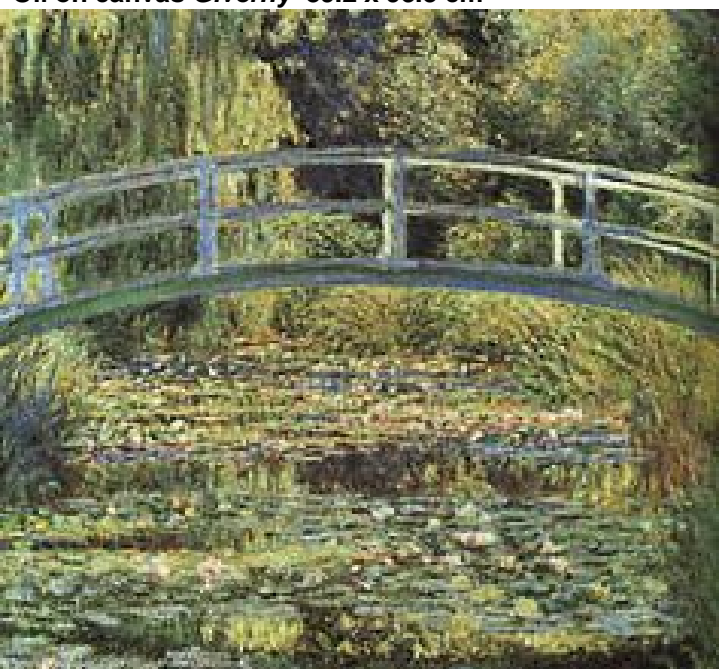
Claude  
Monet  
1840-  
1926)  
*Water-  
Lilies* Oil  
on  
canvas.







1999 *The Japanese Footbridge and the Water Lily Pool*,  
Oil on canvas Giverny 89.2 x 93.3 cm



*The Japanese  
Footbridge and  
the Water Lily  
Pool, Giverny*  
1899



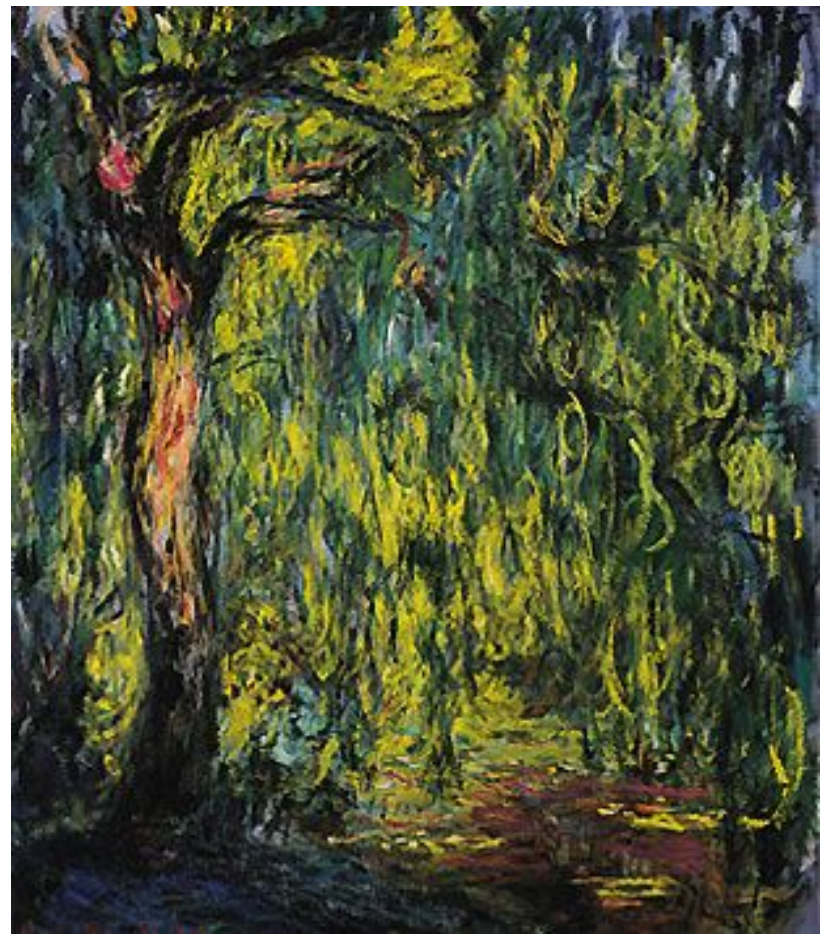
*Photo Anne Chrysoème*



Claude Monet (1840-1926) The Japanese Bridge Probably 1918-24 Oil on canvas 89 x 116 cm The Minneapolis Institute of Arts



**Claude Monet (1840-1926)**  
***Weeping Willow*. 1919.**  
**Oil on canvas. Musée Marmottan, Paris, France**



**Oil on canvas, 51 5/8 x 43 7/16 in**  
***Weeping Willow* 1918**



*Weeping* , 1918  
*Willow* Oil on  
canvas, 51 5/8 x 43  
7/16 in